

*“Air diffusion products are limited only by the imagination...”*

**Air Diffusion + Ducting**







Photos (Top left to right) :: Westfield Pennrith Plaza, NSW :: Audi Fivedock, NSW :: Lend Lease - The Bond, NSW :: Canberra Centre, ACT  
 Front cover :: Q1, Surfers Paradise, QLD - The world's tallest residential tower at 322.5m high with 80 floors and 526 Apartments.  
 Back cover :: Customs, VIC :: Brisbane International Airport Extension, QLD :: Brindabella 18-20, ACT :: Westfield Pennrith Plaza, NSW.

<b>2 - 5</b>	<b>Diffusers</b>
<b>6 - 8</b>	<b>Grilles</b>
<b>8</b>	<b>Registers</b>
<b>9</b>	<b>Louvres</b>
<b>9 - 10</b>	<b>Volume Control Dampers</b>
<b>10</b>	<b>Plenums</b>
<b>11</b>	<b>VAV Boxes</b>
<b>11</b>	<b>Volume Flow Rate Controls</b>
<b>12 - 13</b>	<b>Ducting</b>
<b>13</b>	<b>Air Curtains</b>

## **About Bradflo**

Bradflo is a leading Australian manufacturer and distributor of air distribution, air handling and ventilation products, components and accessories.

Bradflo operates a state of the art computer based business system which integrates manufacturing with sales, inventory and finance live across all Bradflo sites in Australia. This supports the efficient processing of customer quotations and sales orders, and translates into a high level of customer service in the manufacturing and distribution of Bradflo products.

Bradflo's scope of quality products is supplemented with additional quality brand name products selected to enable Bradflo to offer customers the convenience of a comprehensive one-stop-shop. A further strength is our ability to design and manufacture quality customised products.

## **Special Grilles + Diffusers**

Grilles and diffusers are generally available in a wide range of sizes, shapes and colours to suit all architectural design requirements.

## **Product Warranty**

The warranty on Bradflo's ducting, grilles and diffusers is ten years from the date of purchase. We extend to you our confidence in a quality product.

## **Sales + Technical Support**

[See back cover]

## Trox® Technik Round Swirl Diffuser

Type RFD



Suitable for rooms with 2.6 to 4.0 metre ceiling heights.

Features:

- ⚡ High induction
- ⚡ Low noise
- ⚡ Range: 125, 160, 200, 250, 315 & 400 mm diameter

## Trox® Technik Square Swirl Diffuser

Type VDW



Suitable for rooms with 2.6 to 4.0 metre ceiling heights.

Features:

- ⚡ Pattern changing
- ⚡ Round and square face available
- ⚡ Range: 300, 400, 500, 600, 625 & 825 mm face size

## Trox® Technik Square Swirl Diffuser

Type FD Silentair



Suitable for rooms with 2.6 to 4.0 metre ceiling heights.

Features:

- ⚡ High volume at low noise
- ⚡ Fixed and adjustable blade available
- ⚡ Range: 300, 400, 500, 600 & 625 mm face size

## Trox® Technik Linear Diffuser

Type VSD



Suitable for rooms with 2.6 to 4.0 metre ceiling heights.

Features:

- ⚡ Constant & variable flow (optional "varyset")
- ⚡ Adjustable discharge & direction
- ⚡ Range: 1 to 4 slots



## Linear Slot Diffuser

Types ALD, ALDA + ALDA25



The range of linear slot diffusers can be used for either supply or return air.

- ❑ Two adjustable blade profiles offer air pattern variations
- ❑ Can be supplied from single to eight slot styles

## Plenum Diffuser

Types AVPA, AABS + AABD



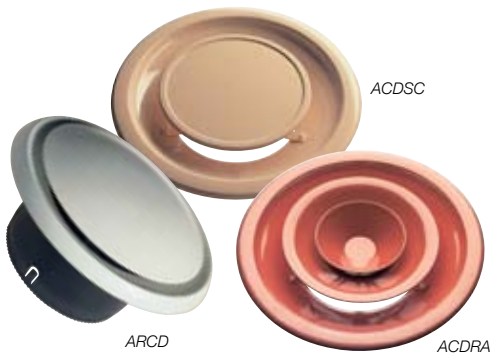
Suitable for rooms with suspended t-bar ceilings.

Due to the fully adjustable air pattern this diffuser can be used for perimeter and centre zoning applications.

The unique design enables the diffusers to be attached to the side of recessed fluorescent light fittings, providing an aesthetically pleasing installation.

## Circular Diffuser

Types ACDSC, ACDRA + ARCD



Suitable for large areas like foyers, lobbies and arenas requiring state-of-the-art airflow and appearance.

Circular cone diffusers are fully adjustable for airflow and distribution.

While normally used for supply air, the ARCD type is an attractive alternative for bathroom exhaust applications.

## Jet Diffuser

Types AJD, AJA, AJS + ADJD



Designed for use in large areas such as theatres, sports centres, entertainment and industrial complexes.

Suitable for air conditioning, evaporative cooling and ventilation uses, the airflow is easily adjusted as is the direction of the air.

Special low profile diffusers designed for showrooms café's and retail outlets are also available.

## Trox® Technik Round Floor Diffuser

Type FB



Designed as a robust aesthetically pleasing floor mounted diffuser.

Features:

- :: Aluminium construction with plastic damper
- :: Dirt trap included as standard
- :: Range: 150 & 200 mm diameter

## Trox® Technik Eyeball Jet Diffuser

Type DUC + DUK



Suitable for applications where an adjustable and long air throw is required.

Features:

- :: Long throw
- :: Adjustable air pattern
- :: Range: 100, 125, 160, 200, 250, 315 & 400 mm diameter

## Trox® Technik Round Swirl Diffuser

Type VDL



Designed to provide air throw from 3.0 to 8.0 metres.

Features:

- :: Long throw
- :: Adjustable for heating and cooling
- :: Range: 315, 400, 630 & 800 mm diameter

## Variable Air Volume (VAV) Diffuser

Type PVFS



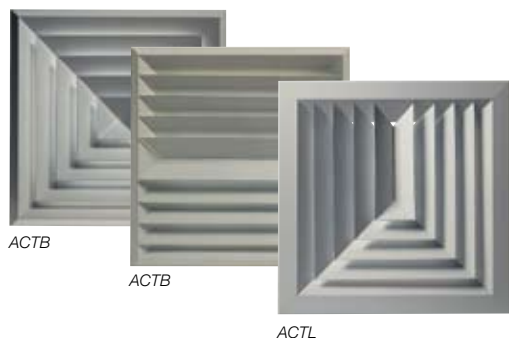
The VAV diffuser is designed for a grid ceiling system with a square-face and round-neck design. Its unique sliding sleeve type VAV control damper ensures a constant temperature is maintained, regardless of system pressure variations. It functions as an air diffuser, a VAV box and a zone temperature controller.

Features:

- :: Totally self-contained control system
- :: Warm-up feature (optional) provides constant volume heating
- :: Self-powered, thermally-actuated, individual VAV room control
- :: Calibrated VAV cooling temperature set point
- :: Low profile induction guide

## Directional Diffuser

Types ACTB + ACTL

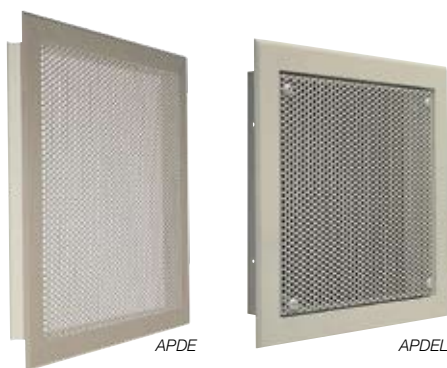


Suitable for t-bar suspended, tile or plaster ceilings. The square louvre face directional diffuser has been developed to conform to modern interior design standards.

Available with a variety of colours, sizes and airflow patterns to suit architectural design requirements.

## Perforated Diffuser

Types APD, APDE + APDEL



Designed to fit most suspended ceilings, the perforated plate is easily removed for fitting and cleaning.

A lockable version is also available for security applications.

Available with a variety of colours, sizes and airflow patterns to suit architectural design requirements.

## Circular Perforated Diffuser

Type APR



The APR range is suitable for large areas like schools, offices and hotels.

Circular perforated supply air diffusers offer a draught free air supply required in some installations. Perforated plates are easily removed for cleaning.

Available in a large range of sizes and colours.

## Environment 2000 Diffuser

Types APM, APMF + APME



This unique and exclusive range of air distribution products have been designed to supply a draught-free, quiet and pleasant atmosphere.

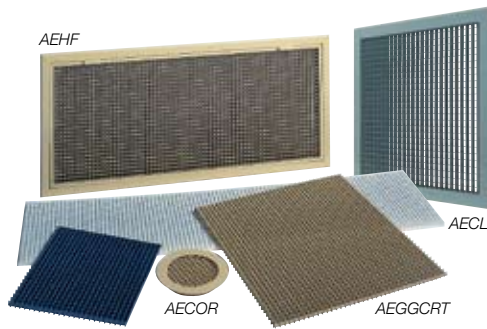
Ideal for offices, foyers and entertainment complexes, or any large area where it is essential to supply large volumes of air quietly and without draughts.

The Environment 2000 range can be supplied as a diffuser only or as a complete kit including an acoustic plenum and air measuring station.

By design, this product can also be used as a matching return of exhaust air grille.

## Egg Crate Grilles

Types AECL, AELHF, AECOR + AEGGCRT



Designed for use in exhaust or return air applications in wall or ceiling installations.

Hinged and removable core models are available as standard and provide easy access to filters, fans or other equipment.

Available in a wide range of sizes, shapes and colours to suit architectural design requirements.

## Bar Grilles

Types AST, ASF, AAF + AAT

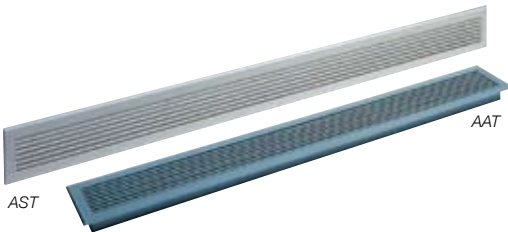


Bar grilles offer an attractive alternative for sidewall, sill or floor mounted air diffusers. They can be used as supply or return air grilles.

Four different blade profiles are available with 0° or 15° deflection, which provide distinctive air patterns. Cores can be either removable or fixed.

## Slimline Bar Grilles

Types AST + AAT



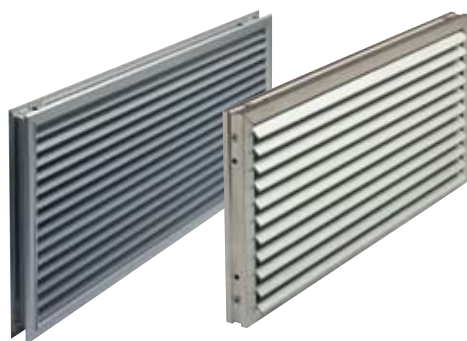
Slimline bar grilles are designed for supply, return or exhaust air applications where a refined and aesthetically pleasing appearance is required.

Manufactured in aluminium with 0° or 15° blade deflection, the range can be supplied in natural anodized or powder coated finish.

Slimline bar grilles can be made to measure in a range of colours to suit architectural design requirements. They may be installed in long continuous sections, keyed together to maintain alignment.

## Door Grilles

Type AADR



Aluminium door grilles have horizontally mounted blades that are firmly fixed into a frame. An adjustable rear frame covers the grille on the opposite side of the door.

A slimline frame channel version can also be supplied.

Available in a wide range of sizes and colours.



## Air Transfer Grilles

Type ATJ



The acoustic air transfer grille is a rectangular grille that is designed for direct wall mounting.

The transfer grille is double sided and is identical on both sides.

Design and construction of the grille allows high airflow while minimising sound transmission.

## Half Chevron Grilles

Type ARG



Designed as an attractive wall mounted return air grille it can also be used as a decorative grille or infill panel.

The grille can be manufactured with a hinged or removable core and may accommodate a variety of filters.

## Variable Deflection Grilles

Types AUR, AURR + AURC



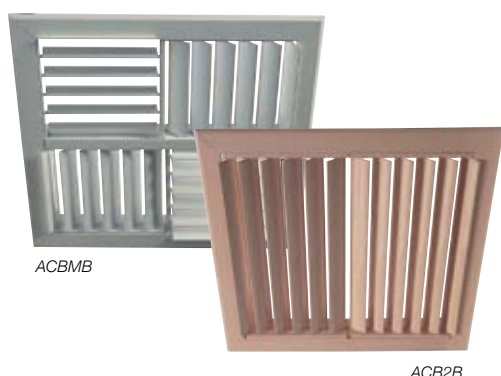
Also known as sidewall registers, they are designed for mounting directly into ductwork or bulkheads.

Curved face options are available for mounting into circular or round ductwork. Removable core models allow removal for cleaning and maintenance.

A large range of colours and sizes are available.

## Curved Blade Grilles

Types ACBMB + ACB2B



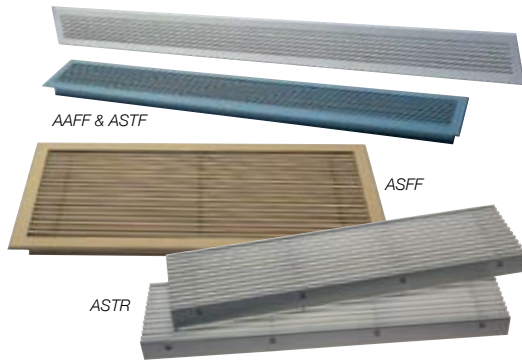
These grilles are referred to as multi-directional outlets and are designed for ceiling mounted supply air use. They are particularly suitable for evaporative cooler installations.

Available in one, two, three or four-way blow patterns, they are one of the most efficient and quietest grilles available.

There is a large range of sizes produced, in colours to suit most requirements.

## Floor Grilles

Types ASFF, AAFF, ASTF + ASTFI

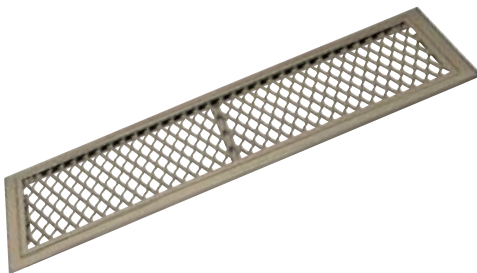


Designed for use in computer rooms, these grilles are reinforced for trafficable locations. This product range is available in a frame or can also be supplied in continuous lengths. Four different blade profiles can be used to provide a variety of air patterns.

Available in a range of colours and sizes to suit most applications.

## Floor Grilles

Type AHDF



These heavy duty floor grilles are constructed of expanded steel mesh with a fully welded steel frame.

May be used as heavy duty exhaust grilles in a variety of applications, including underground car parks. They may also be used for return air applications.

Balancing dampers can be fitted behind the grille.

## Floor Registers

Type ASFR



Manufactured with a strong all-steel construction, this range of floor registers have been designed for use in both domestic and commercial applications.

A wide range of standard colours and sizes of this range are available on request.

## Kick Rail Registers

Type AKRR

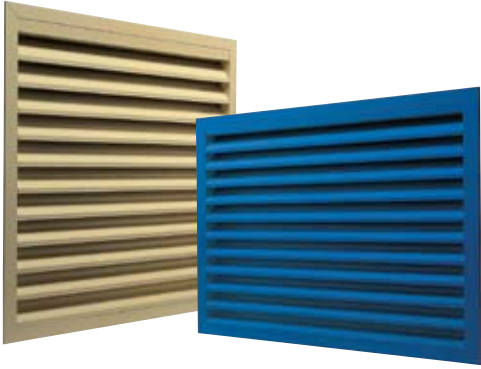


This range of grilles has been designed for use in kick rails and base boards. With face dimensions of 300 mm long and only 50mm wide they provide a nice clean appearance.

Colours available are white, beige, brown and black.

## Louvers

Type AWL40



Horizontal 40 Series louvers are suitable for weatherproof applications and are supplied with bird wire mesh as standard. Insect screen can also be fitted on request.

The aluminium louvers have a standard natural anodized finish.

The 40 Series can also be used as an architectural decorative cladding in any shape or size.

## Custom Louvers

Types ADWL80/100, ADWLC80/100, ADRAINWL + AVWLF80



The 80 Series are available in either horizontal or vertical versions with 80mm blade weather louvers with double rain trap, flanged frame or open boxed section.

The 100 Series horizontal louvers have a double rain trap, with a flanged frame or open boxed section.

All 80 & 100 Series louvers are aluminium and are available in natural anodized, mill or painted finish.

## Volume Control Dampers

Types AVCD + AVCDP



Manufactured with an extruded aluminium frame and blades, the range of volume control dampers are available in an opposed blade configuration.

The AVCDP has been designed as a positive shut off with an extremely low leakage rate. The AVCDP is manufactured with aluminium side seals and santoprene blade seals to minimize leakage under pressure.

Volume control dampers can be manufactured for either manual or motorized operation.

## Non-Return Dampers

Type ANRD



Non-return dampers are constructed from aluminium extrusion and incorporate low profile blades for accurate damper control with minimum pressure requirement. The blades have foam edge sealing gaskets for more effective sealing when closed.

Available in various sizes or fitted with spacer profile to fit any duct size required.



## Fire Dampers

Types FSD, FSP + FSE



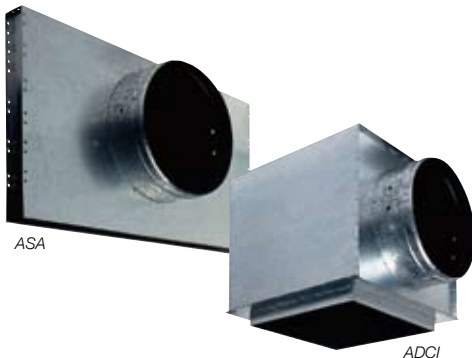
FSD

This range of Curtain Fire Dampers are designed to slow down the spread of fire.

Normally manufactured from galvanised steel, an optional stainless steel version is available if required.

## Plenums

Types ADC, ADCI, ADE, ASA + ASE



ASA

ADCI

Plenum boxes are manufactured to suit the entire Bradflo range of diffusers and grilles.

They can be supplied un-insulated or with acoustic and thermal insulation.

Air measuring devices and/or dampers can be factory fitted or supplied separately.

## Plenum Accessories

Types AMU, ARU, AOBD, AHSP, ACK + ASSD



ACK

AMU

AOBD

ASSD

End-of-line or plenum mounted measuring devices along with balancing dampers enable an accurate measurement of the airflow.

A full range of dampers with opposed or parallel blades, stream splitters and equalizing grids are also available.

The spigot range includes bellmouth with or without dampers, straight spigots and branch takeoffs.

## Pre-Insulated Plenums

Various



The pre-insulated plenums are fabricated from premium grade Kingspan® PalDuct™ (PIR panels) or Kingspan® KoolDuct™ (phenolic panels), which includes a foil laminate facing on both sides.

Pre-insulated plenums are lightweight and very easy to install compared to those fabricated from sheet metal. In addition, the need for support is minimised and installation time and costs are reduced.

Available with a top entry or side entry inlet and can accommodate any size of grille or linear diffuser.

## Trox® Technik VAV Boxes

Type TVBA



VAV terminal boxes are available with square or round spigots for connection to the high pressure side. The low pressure side is suitable for slide-on flange or angle flange connection.

Supplied with or without controls and models with coils and fans also available. 100% factory tested and calibrated.

## Trox® Technik Volume Flow Rate Controls

Types R + E



Flow rate controllers are available with square or round spigots and a self-balancing actuator.

Optional fitting of an actuator capable of resetting the volume from a BMS.

Sizes available: 100, 150, 200, 250, 300, 350 & 400 mm diameter

## Trox® Technik Volume Flow Limiter

Type VFL



The VFL Air Flow Limiter may be used to balance flow volumes in ventilation and air conditioning systems, previously a time-consuming and costly task.

The flow rate set point is easily adjusted on site at the point of installation, prior to inserting into the air duct or spigot. The VFL limits the air flow to the set rate and keeps it constant within narrow tolerances when pressure changes occur.

Sizes available: 80, 100, 125, 160, 200 & 250 mm diameter  
Flow rates: From 4 to 250 l/s

## Measuring Unit With Balancing Damper

Types ARC + ARE



The ARC and ARE are fixed air measuring device constructed from galvanized steel for mounting in circular ductwork. They provide a simple and accurate method of measuring air flow. The air flow rate is determined by the measurement of the differential pressure across the mid mounted sensor and is then cross referenced to the diameter of the measuring unit.

The ARC has internal cord controls accessible through the face of the grille or diffuser. The ARE has an external manual adjustment or may be fitted with a control motor.

Sizes available: 125, 150, 200, 250, 300, 350, 400 & 450 mm diameter

## Air Conditioning Duct

Types AIS, PDEC + ABCD



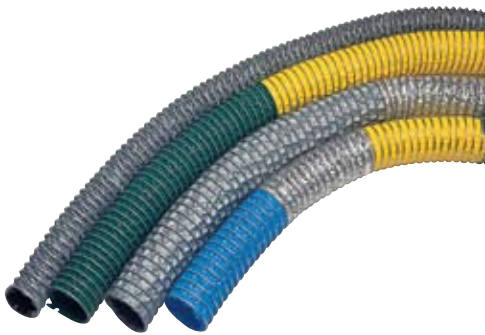
The extensive range of air conditioning duct are available in a variety of forms for different applications.

Nude core is available for ventilation, heating and cooling and can be supplied with either polyester or biosoluble glass wool insulation.

All ducts are manufactured to meet the requirements of the Building Code of Australia and all relevant Australian Standards and safety requirements including AS4508 and AS4254.

## Industrial Duct

Type AHE



Extractaflex has been specifically designed for industrial use in the removal of dust, small particles, fumes and other atmospheric contaminants.

The Extractaflex range is manufactured in a wide range of materials which offer resistance to heat, abrasion and chemical atmospheres.

## Skylight Duct

Type AHF



Skylight duct is manufactured with an ultra-reflective inner surface, which ensures the maximum level of light is transferred from the roof dome to the room.

The duct can be supplied in round, square or rectangular shapes and in sizes to suit individual customer needs.

## Klimagiel™ Soft Air Fabric Duct

Type [SOFT-IN®] + [JET-IN®]



The [SOFT-IN] system is made from a permeable polyester fabric and distributes low velocity, homogenous, draught-free air throughout the conditioned space.

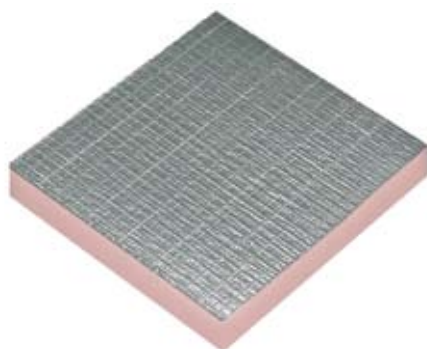
The [JET-IN] system is made from a non-permeable fabric and air is diffused into the conditioned space through a series of jets (or holes). The size and layout of the jets is calculated by a computer program to deliver the required air flow and distribution

Soft air duct can be supplied in circular or semi circular shape and is available in all RAL colours.

Ducting is connected by concealed zippers (including elbows and reducers), is lightweight, easy to install and fire resistant.



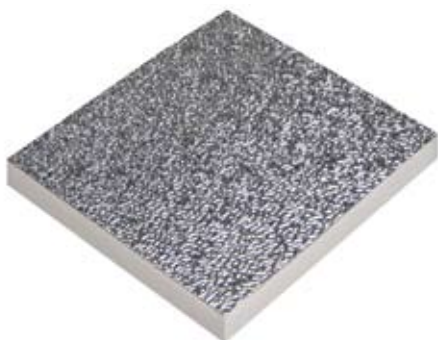
## Kingspan® KoolDuct™ (Phenolic Panels)



Kingspan **KoolDuct™** panels are made from a premium grade rigid phenolic insulation core, with a 25 micron foil laminate facing on both sides. It is ideal for the fabrication of air conditioning ductwork. Kingspan **KoolDuct™** complies with the energy efficiency and fire requirements of AS4254 and the relevant sections of the BCA. The product contains zero ozone depleting substances and has full UL listing in the USA.

Panel sizes: 3930x1200x22mm & 3930x1200x28mm  
 Pack sizes: 22mm thick — 9 panels per pack (42.4m<sup>2</sup>)  
 28mm thick — 8 panels per pack (37.7m<sup>2</sup>)

## Kingspan® PalDuct™ (PIR Panels)



Kingspan **PalDuct™** PIR panels are used for the fabrication of air conditioning ductwork, plenums and other accessories for heating, cooling and ventilating systems in low and medium pressure applications. The panels consist of a CFC-free rigid polyisocyanurate insulation core faced on both sides with 80 micron embossed aluminium foil.

Panel sizes: 4000x1200x20mm & 4000x1200x30mm.  
 Pack sizes: 20mm thick — 10 panels per pack (48.0m<sup>2</sup>)  
 30mm thick — 7 panels per pack (33.6m<sup>2</sup>)

## Kingspan® Accessories



A complete range of fabrication tools and joining systems is available for both Kingspan **KoolDuct™** and Kingspan **PalDuct™** pre-insulated ductwork.

Fabrication tools include hand tools and automatic machines for cutting, v-grooving, bending etc. Joining systems include Tiger connectors, closures and hangers, adhesives and sealants. A range of aluminium extrusion profiles is also available for joining duct sections on systems running at higher static pressure.

## VentiTech™ Air Curtains

### Type PACC



Designed to seal in heated or refrigerated air and repel insects and wind borne contaminants such as dust, fumes and pollutants from entering or exiting a facility.

Air curtains are designed for installation in the doorways of shops, office buildings, hotels, restaurants, clinics, hospitals, halls, bowling alleys, lobbies right through to specialised hygienic and sanitary facilities. Ceramic heater air curtains are also available.

Available in 900mm, 1000mm, 1200mm & 1500mm fan only or ceramic heater.

All air curtains are supplied with remote controls.

Sales + Technical Support



**Bradflo Pty Ltd**

**Administration & Factory**  
20 Garland Avenue, Albury NSW 2640

T: (02) 6058 6900 F: (02) 6058 6928 E: enquiries@bradflo.com

**Brisbane**  
5/41 Lysaght Street, Acacia Ridge QLD 4110

T: (07) 3216 9611 F: (07) 3216 9477 E: brisbane.sales@bradflo.com

**Sydney**  
5-7 Salisbury Street, Silverwater NSW 2128

T: (02) 9735 7000 F: (02) 9735 7011 E: sydney.sales@bradflo.com

**Canberra**  
Unit 3.1, 5 Dairy Road, Fyshwick ACT 2609

T: (02) 6239 3400 F: (02) 6239 3404 E: canberra.sales@bradflo.com

**Riverina (Servicing South NSW & North VIC)**  
920 Metry Street, Albury NSW 2640

T: (02) 6040 6034 F: (02) 6040 6035 E: riverina.sales@bradflo.com

**Melbourne**  
7 Rushdale Street, Knoxfield VIC 3180

T: (03) 9764 9656 F: (03) 9764 9661 E: melbourne.sales@bradflo.com

**TOLL FREE TELEPHONE: 1300 138 688**

[www.bradflo.com](http://www.bradflo.com)

**A&B Mintec (A Division of Bradflo Pty Ltd)**

**Cairns**  
351 Spence Street Bungalow, Cairns QLD 4870

T: (07) 4035 2477 F: (07) 4035 2280 E: sales@ab-mintec.com

**Townsville**  
5 Greg Jabs Court Garbutt, Townsville QLD 4814

T: (07) 4725 7500 F: (07) 4725 5577 E: sales@ab-mintec.com

