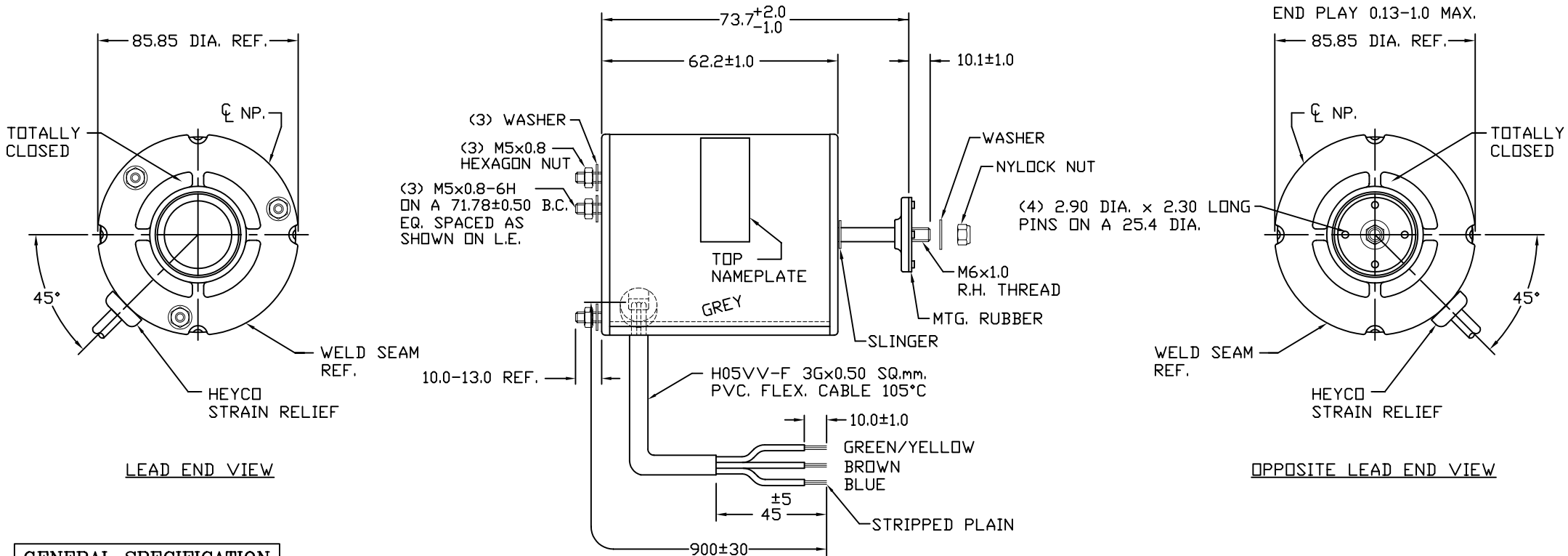


CUSTOMER IS SOLELY RESPONSIBLE FOR MOTOR PERFORMANCE AND SUITABILITY IN APPLICATIONS FOR CUSTOMER'S USES.

THIS MOTOR IS INTENDED FOR SAMPLING AND CUSTOMER APPROVAL ONLY. NO APPLICATION FITNESS APPROVAL IS IMPLIED AS THAT CAN ONLY BE DETERMINED BY THE CUSTOMER.



GENERAL SPECIFICATION

- 1. MOTOR TYPE: SHADED POLE MOTOR
- MOTOR DUTY: CONTINUOUS AIR OVER MOTOR
- 2. MOTOR MODEL: KJA2C4704
- 3. MOTOR DETAILS: 240V 50Hz 0.22A 1Ø 4P 7Wout 1300RPM
- APPLICATION: CONDENSING UNIT
- MOUNTING METHOD: (3) M5x0.8 STUD SIDE OF L.E. HORIZONTAL DIRECTIONS
- 4. MATERIAL DETAILS: COLD ROLLED STEEL
- (1) SHELL: ADC 12 ALUMINIUM
- (2) END HEAD: S45C WITH ZINC PHOS. WITH AN ANTI-OXIDIZATION COATING
- (3) SHAFT: SINTERED IRON
- (4) SLEEVE BEARING: H05VV-F 3Gx0.50 SQ.mm.
- (5) LEAD WIRE (MULTI CORE): PVC. FLEXIBLE CABLE 105°C
- 5. MECHANICAL SPECIFICATION: CLOCKWISE FROM LEAD END
- (1) ROTATION OF MOTOR: 0.13-1.0mm. MAX.
- (2) END PLAY: 0.05mm. T.I.R. MAX.
- (3) CONCENTRICITY OF SHAFT: AT 15.0mm. FROM SHAFT END

KULTHORN
ELECTRIC CO.,LTD. N2664

THERMALLY PROTECTED

MODEL KJA2C4704 SER.XXYXXXXX

240V 50Hz 0.22A 7Wout

1300RPM AIR OVER MOTOR

MADE IN THAILAND

128 BARCODE FORMAT >>> ROTATION →

NAMEPLATE

NOTE :
1. BARCODE DATA IS KJA2C4704

MOTOR MODEL: KJA2C4704	ELECTRICAL PER. SAMPLE NO. K0473-8	ROTATION: CWLE	WEIGHT: - Kg.	CUSTOMER:
KULTHORN ELECTRIC CO.,LTD.		DRAWN BY: PICHART	CHECKED BY:	APPROVED BY:
		UNIT: <input checked="" type="checkbox"/> MM <input type="checkbox"/> INCH	SCALE: NONE -	DWG. NO.: 82KTJ1-1277
OUTLINE MOTOR DRAWING				