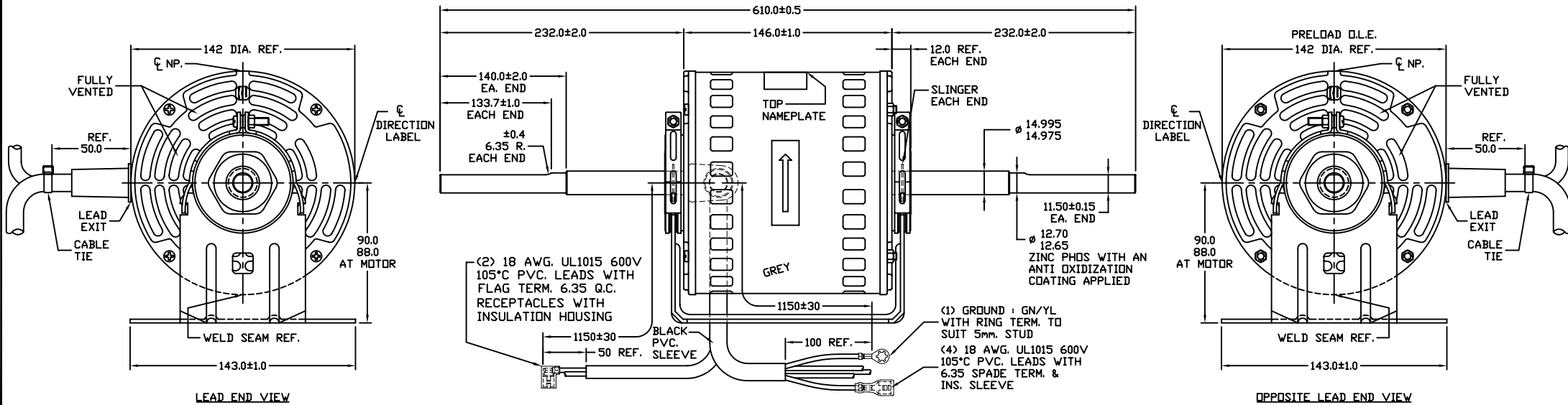


CUSTOMER IS SOLELY RESPONSIBLE FOR MOTOR PERFORMANCE AND SUITABILITY IN APPLICATIONS FOR CUSTOMER'S USES.

THIS MOTOR IS INTENDED FOR SAMPLING AND CUSTOMER APPROVAL ONLY. NO APPLICATION FITNESS APPROVAL IS IMPLIED AS THAT CAN ONLY BE DETERMINED BY THE CUSTOMER.



GENERAL SPECIFICATION

- | | |
|-----------------------------|--|
| 1. MOTOR TYPE | CAPACITOR RUN MOTOR |
| MOTOR DUTY | CONTINUOUS AIR OVER MOTOR |
| INSULATION CLASS | B (130°C) |
| 2. MOTOR MODEL | KHF2T4704 |
| 3. MOTOR DETAILS | 220-240V.a.c. 50/60Hz 5.00A 1∅ 4P 770W
20 µF 440 VAC CAPACITOR
1360/1260/1160RPM |
| APPLICATION | FAN COIL UNIT |
| MOUNTING METHOD | RESILIENT MTG. BASE |
| 4. MATERIAL DETAILS | |
| (1) SHELL | COLD ROLLED STEEL |
| (2) END HEAD | ADC 12 ALUMINIUM |
| (3) SHAFT | S45C WITH ZINC PHOS. WITH AN ANTI-OXIDIZATION COATING |
| (4) BALL BEARING | #6202 ZZ |
| (5) LEAD WIRE | #18 AWG. STANDARD COPPER WIRE |
| (SINGLE CORE) | UL1015 600V 105°C PVC. LEADS |
| 5. MECHANICAL SPECIFICATION | |
| (1) ROTATION OF MOTOR | COUNTER CLOCKWISE FROM LEAD END |
| (2) PRELOAD (WAVE WASHER) | SIDE OF OPPOSITE LEAD END |
| (3) CONCENTRICITY OF SHAFT | 0.05mm. T.I.R. MAX.
AT 15.0mm. FROM SHAFT END |

<p>KULTHORN ELECTRIC CO.,LTD.</p> <p>N2664</p>	<p>LOW-WHITE SWITCH MED-GREY HIGH-BROWN COMMON-BLUE CAP-DRANGE AUX-DRANGE GND-GN/YL CAPACITOR</p>

NAMEPLATE

MOTOR MODEL:	ELECTRICAL PER. SAMPLE NO.	ROTATION:	WEIGHT:	CUSTOMER:
KHF2T4704	S0085	CCWLE	- Kg.	
<p>KULTHORN ELECTRIC CO.,LTD.</p>	DRAWN BY:	CHECKED BY:	APPROVED BY:	<p>OUTLINE MOTOR DRAWING</p> <p>DWG. NO. 82KTH2-3078</p>
	PICHART			
UNIT:	SCALE:			
<input checked="" type="checkbox"/> MM <input type="checkbox"/> INCH	NONE -			