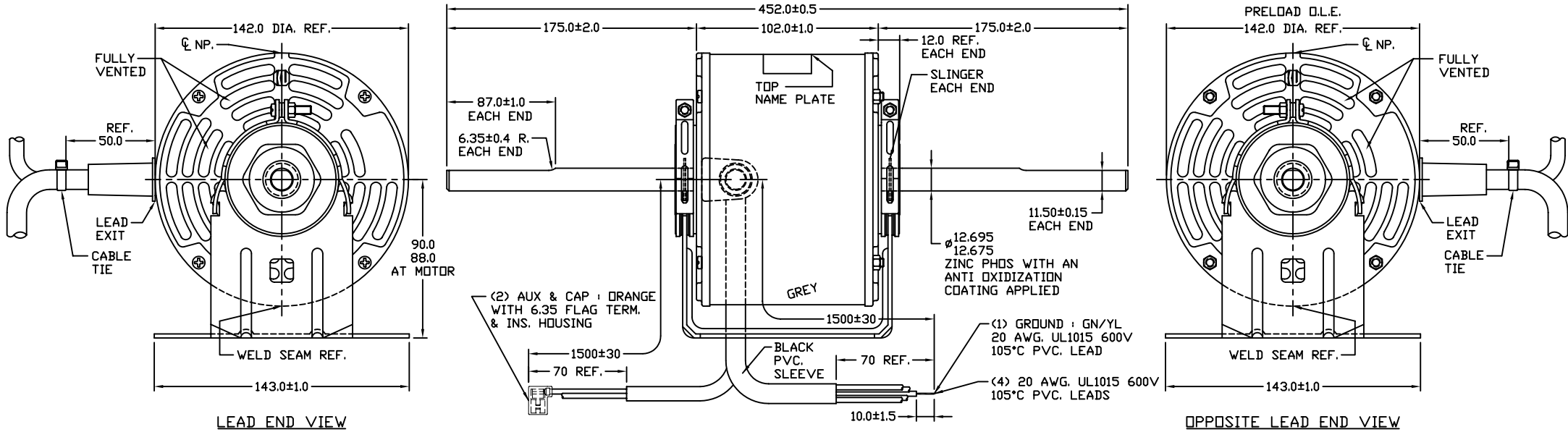


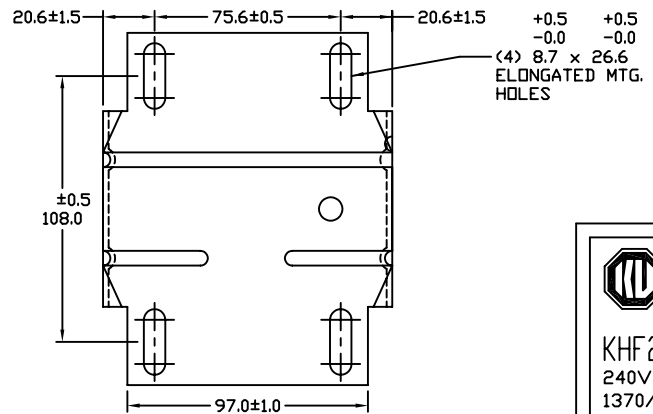
CUSTOMER IS SOLELY RESPONSIBLE FOR MOTOR PERFORMANCE AND SUITABILITY IN APPLICATIONS FOR CUSTOMER'S USES.

THIS MOTOR IS INTENDED FOR SAMPLING AND CUSTOMER APPROVAL ONLY. NO APPLICATION FITNESS APPROVAL IS IMPLIED AS THAT CAN ONLY BE DETERMINED BY THE CUSTOMER.



GENERAL SPECIFICATION

- | | |
|-----------------------------|--|
| 1. MOTOR TYPE | CAPACITOR RUN MOTOR |
| MOTOR DUTY | CONTINUOUS AIR OVER MOTOR |
| INSULATION CLASS | B (130°C) |
| 2. MOTOR MODEL | KHF2D4701 |
| 3. MOTOR DETAILS | 240V 50Hz 1.17A 1Ø 4P 130Wout
1370/1270/1170RPM
4µF 440VAC CAPACITOR
FAN COIL UNIT
RESILIENT MTG. BASE |
| APPLICATION | |
| MOUNTING METHOD | |
| 4. MATERIAL DETAILS | |
| (1) SHELL | COLD ROLLED STEEL |
| (2) END HEAD | ADC 12 ALUMINIUM |
| (3) SHAFT | S45C WITH ZINC PHOS. WITH AN ANTI-OXIDIZATION COATING |
| (4) BALL BEARING | #6201 ZZ |
| (5) LEAD WIRE (SINGLE CORE) | #20 AWG. STANDARD COPPER WIRE
UL1015 600V 105°C PVC. LEADS |
| 5. MECHANICAL SPECIFICATION | |
| (1) ROTATION OF MOTOR | COUNTER CLOCKWISE FROM LEAD END |
| (2) PRELOAD (WAVE WASHER) | SIDE OF OPPOSITE LEAD END |
| (3) CONCENTRICITY OF SHAFT | 0.05mm. T.I.R. MAX.
AT 15.0mm. FROM SHAFT END |



KULTHORN ELECTRIC CO.,LTD.

KHF2D4701 SER.XXYXXXXX

240V 50Hz 1.17A 130Wout

1370/1270/1170RPM AIR OVER MOTOR

CAP. 4µF 440VAC THERMALLY PROTECTED

← ROTATION →

MOTOR

LOW-WHITE SWITCH

MED-GREY LINE

HIGH-BROWN N

COMMON-BLUE

CAP-ORANGE CAPACITOR

AUX-ORANGE

GND-GN/YL

MADE IN THAILAND

NAME PLATE

MOTOR MODEL:	ELECTRICAL PER. SAMPLE NO.	ROTATION:	WEIGHT:	CUSTOMER:
KHF2D4701	S0179	CCWLE	4.00 Kg.	
KULTHORN ELECTRIC CO.,LTD.		DRAWN BY:	CHECKED BY:	APPROVED BY:
		PICHART		
		UNIT:	SCALE:	DWG. NO.:
		<input checked="" type="checkbox"/> MM <input type="checkbox"/> INCH	NONE -	82KTH2-3006