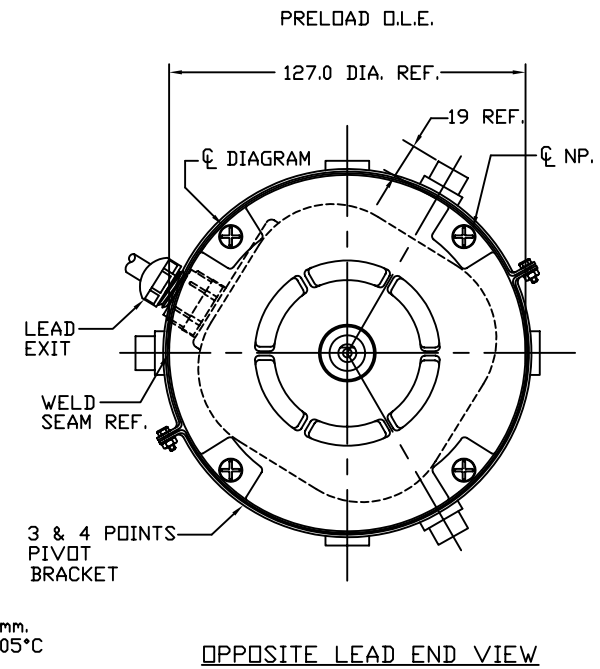
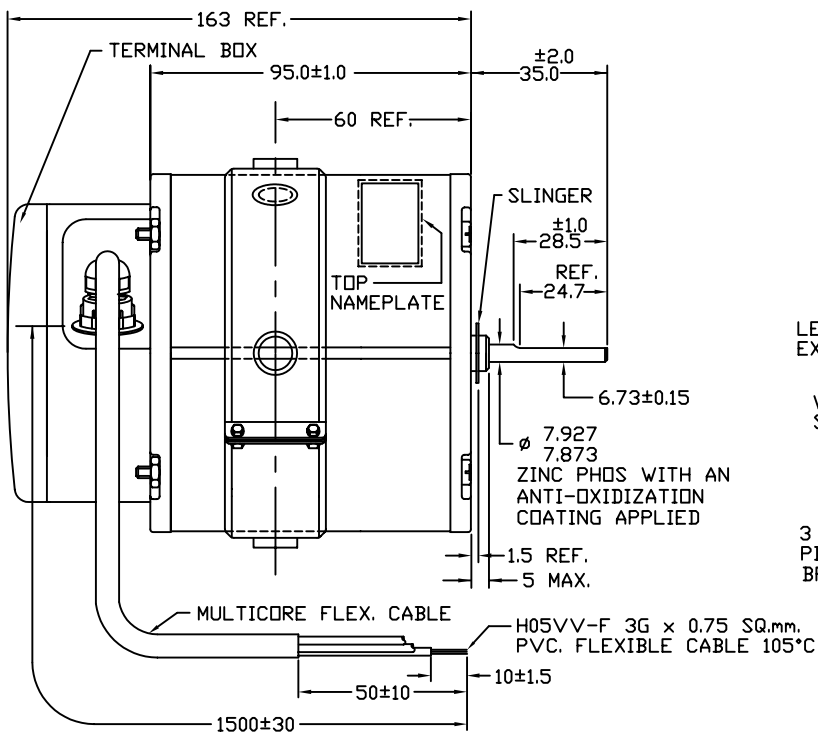
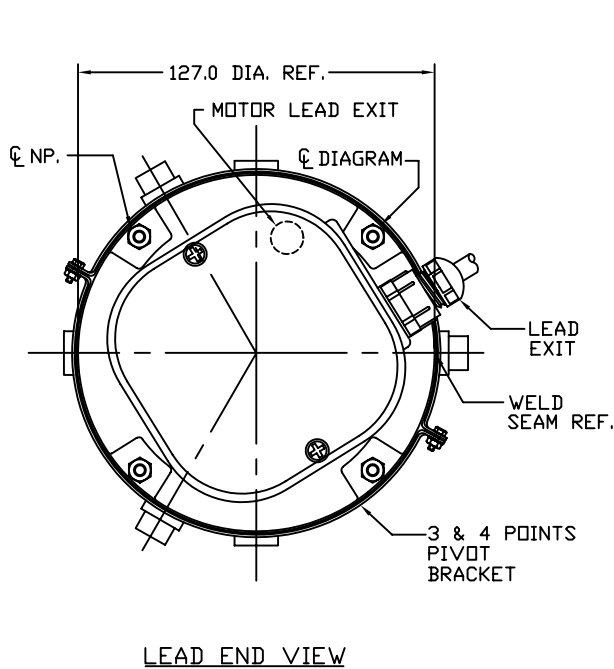


CUSTOMER IS SOLELY RESPONSIBLE FOR MOTOR PERFORMANCE AND SUITABILITY IN APPLICATIONS FOR CUSTOMER'S USES.

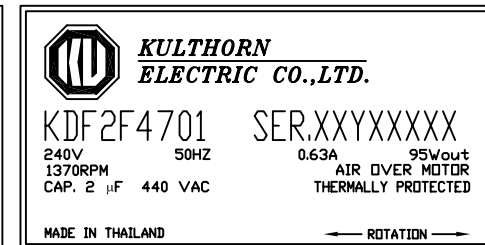
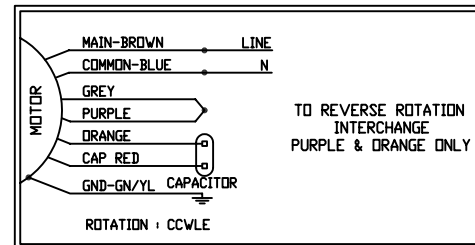
THIS MOTOR IS INTENDED FOR SAMPLING AND CUSTOMER APPROVAL ONLY. NO APPLICATION FITNESS APPROVAL IS IMPLIED AS THAT CAN ONLY BE DETERMINED BY THE CUSTOMER.



GENERAL SPECIFICATION

- | | |
|-----------------------------|---|
| 1. MOTOR TYPE | CAPACITOR RUN MOTOR |
| MOTOR DUTY | CONTINUOUS AIR OVER MOTOR |
| 2. MOTOR MODEL | KDF2F4701 |
| 3. MOTOR DETAILS | 240V 50Hz 0.63A 1∅ 4P 95Wout
1370RPM
2 µF 440 VAC CAPACITOR |
| APPLICATION | CONDENSING UNIT |
| MOUNTING METHOD | MULTI-POINT MOUNTING BRACKET |
| 4. MATERIAL DETAILS | |
| (1) SHELL | COLD ROLLED STEEL |
| (2) END HEAD | ALUMINUM CAST SEA 12 K.U. #115P4 |
| (3) SHAFT | S45C WITH ZINC PHOS. WITH AN ANTI-OXIDIZATION COATING |
| (4) BALL BEARING | #6201 ZZ |
| (5) LEAD WIRE | H05VV-F 3Gx0.75 SQ.mm.
PVC. FLEXIBLE CABLE 105°C |
| 5. MECHANICAL SPECIFICATION | |
| (1) ROTATION OF MOTOR | REVERSIBLE |
| (2) PRELOAD (WAVE WASHER) | SIDE OF OPPOSITE LEAD END VIEW |
| (3) CONCENTRICITY OF SHAFT | 0.05mm. T.I.R. MAX.
AT 15.0mm. FROM SHAFT END |

NOTE : TO REVERSE ROTATION INTERCHANGE PURPLE & ORANGE ONLY



MOTOR MODEL: KDF2F4701	ELECTRICAL PER. SAMPLE NO. S0166	ROTATION: REVERSIBLE	WEIGHT: - Kg.	CUSTOMER:
		DRAWN BY: PICHART	CHECKED BY:	APPROVED BY:
		UNIT: <input checked="" type="checkbox"/> MM <input type="checkbox"/> INCH	SCALE: NONE -	DWG. NO.:
				OUTLINE MOTOR DRAWING
				82KTD1-1006