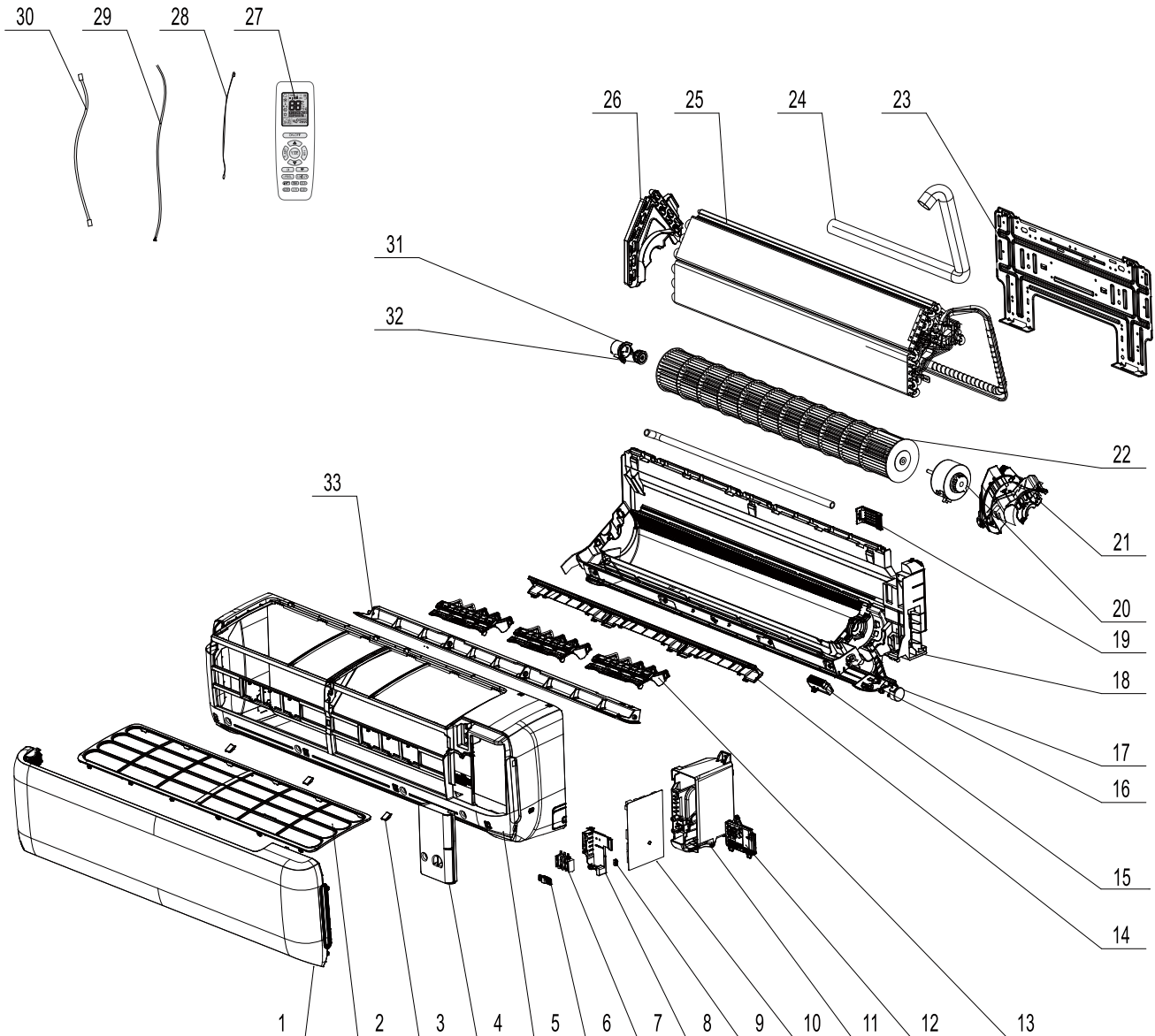


ATE



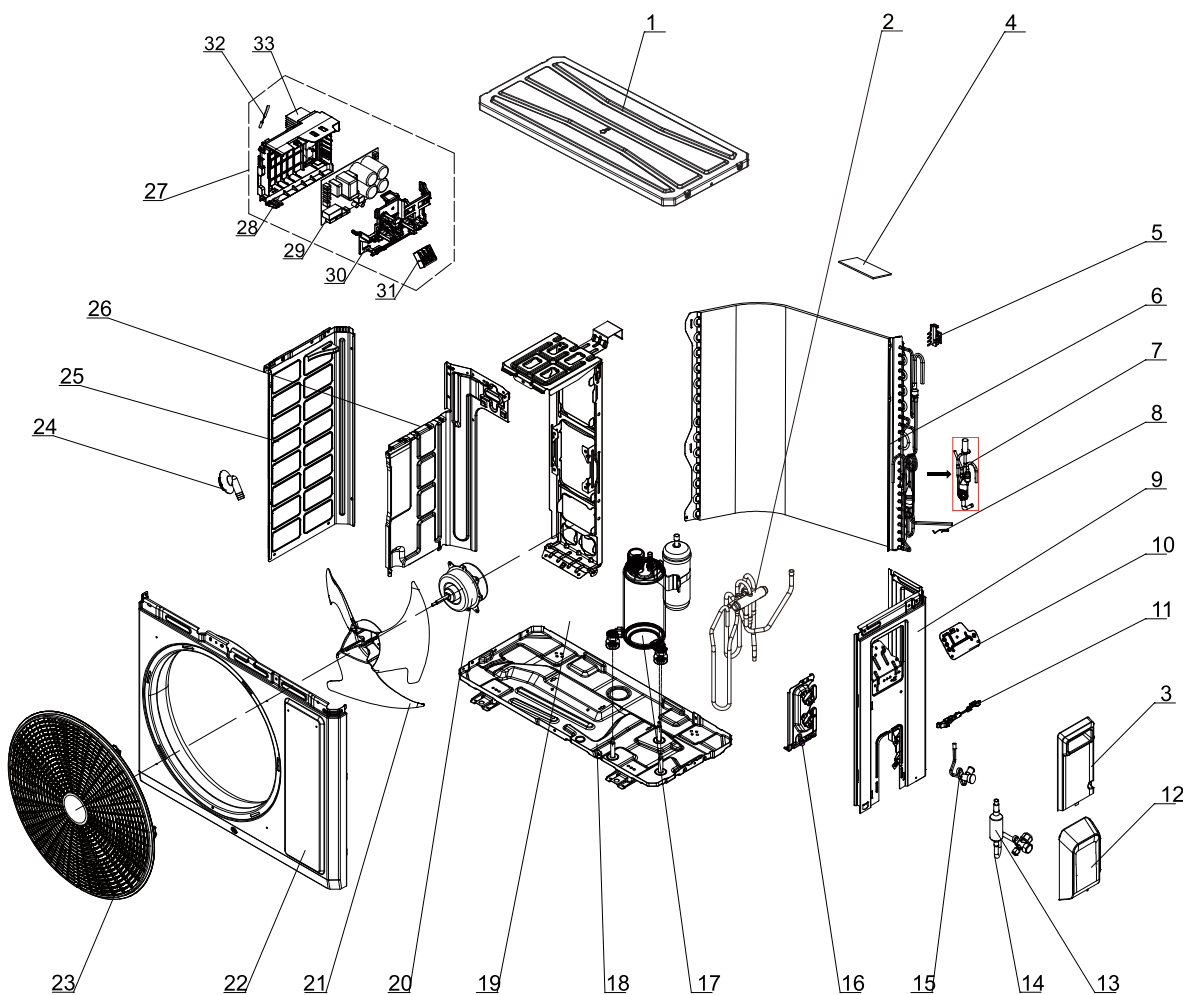
The component picture is only for reference; please refer to the actual product.

NO.	Description	NO.	Description	NO.	Description
1	Front Panel	12	Display Board	23	Wall Mounting Frame
2	Filter Sub-Assy	13	Air Louver	24	Heat Insulating Hose
3	Screw Cover	14	Helicoid Tongue	25	Evaporator Assy
4	Electric Box Cover	15	Plasmacluster Ion	26	Evaporator Support
5	Front Case	16	Crank	27	Remote Controller
6	Cable Clamp 2	17	Stepping Motor	28	Temperature Sensor
7	Terminal Board	18	Rear Case	29	Connecting Cable
8	Supporter	19	Connecting pipe clamp	30	Connecting Cable
9	Jumper	20	Fan Motor	31	O-Gasket sub-assy of Bearing
10	Main Board	21	Motor Press Plate	32	Ring of Bearing
11	Electric Box	22	Cross Flow Fan	33	Guide Louver

Some models may not contain some parts, please refer to the actual product.

10.2 Outdoor Unit

GWH12ATCXB-K6DNA1B/O

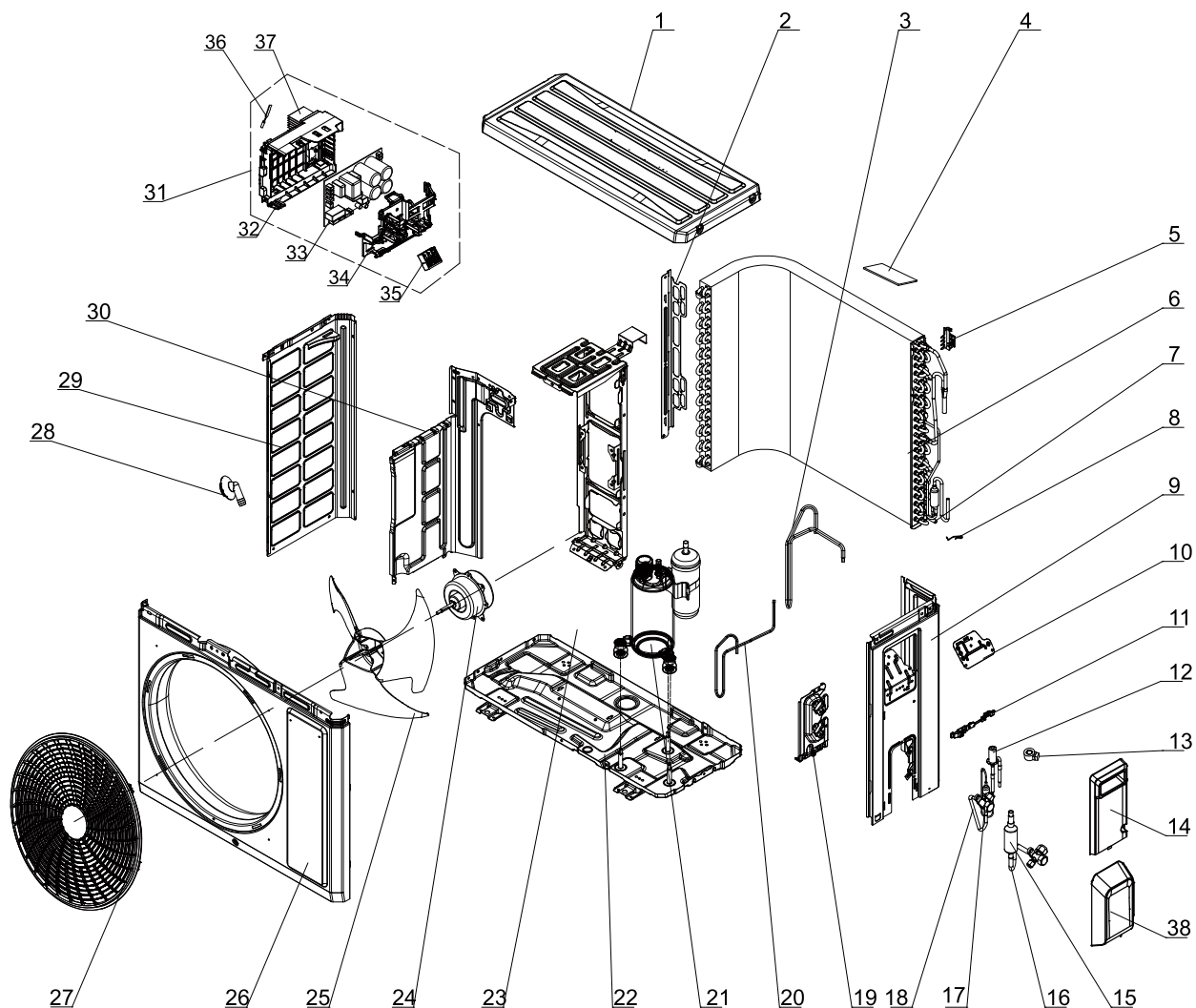


The component is only for reference; please refer to the actual product

NO.	Description
1	Coping
2	4-Way Valve Assy
3	Handle (Right)
4	Sponge(Condenser)
5	Temperature Sensor Support
6	Condenser Assy
7	Electric Expansion Valve Sub-Assy
8	Sensor Insert
9	Right Side Plate
10	Earthing Plate Sub-Assy
11	Wire Clamp
12	Valve Cover
13	Silencer
14	Cut off Valve Sub-Assy
15	Strainer
16	Valve Support
17	Compressor and Fittings

NO.	Description
18	Chassis Sub-assy
19	Motor Support
20	Fan Motor
21	Axial Flow Fan
22	Cabinet
23	Front Grill
24	Drainage Joint(ODU)
25	Left Side Plate
26	Clapboard
27	Electric Box Assy
28	Electric Box
29	Main Board
30	Electric Box Cover
31	Terminal Board
32	Temperature Sensor
33	Radiator

Some models may not contain some parts, please refer to the actual product.



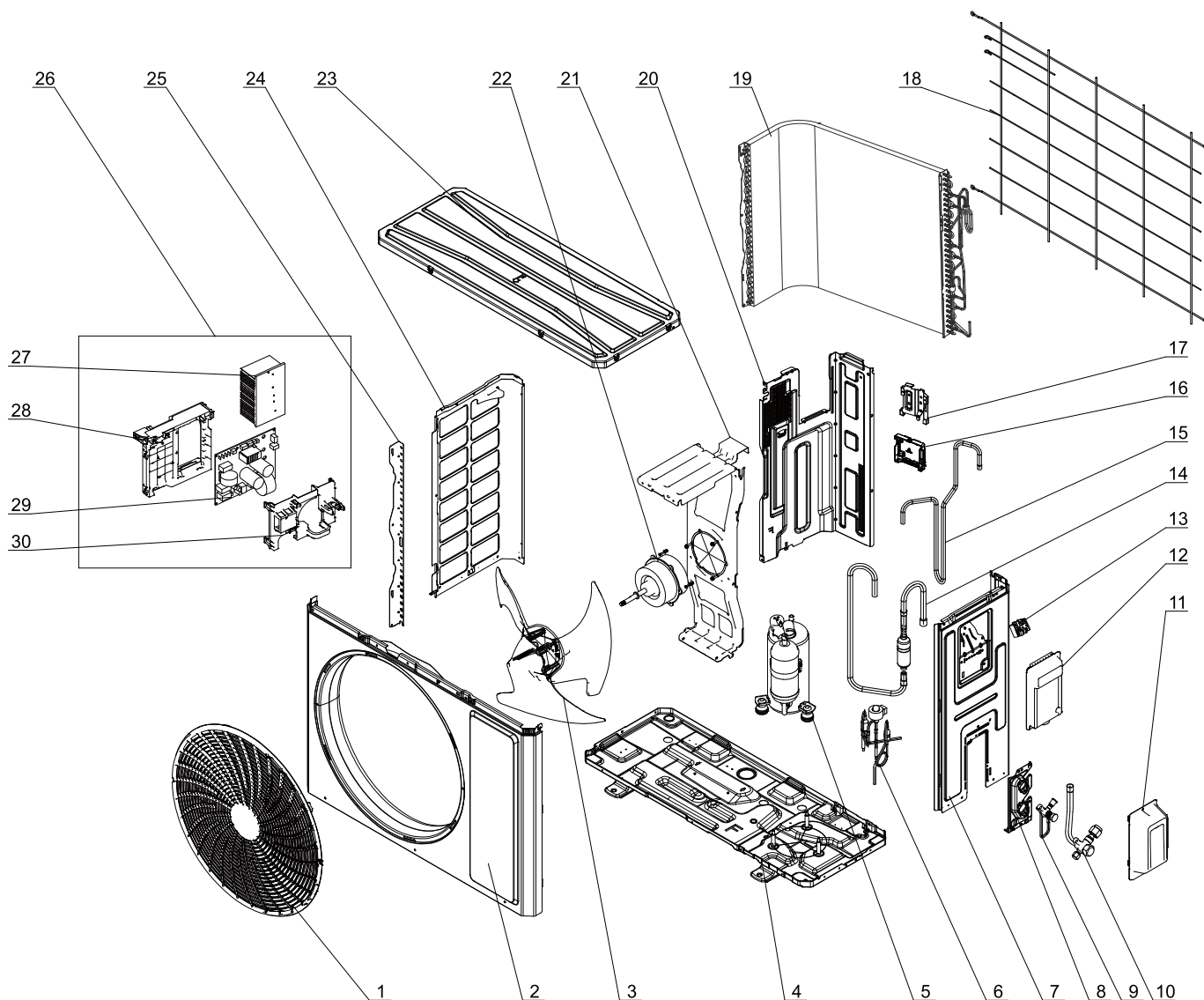
The component is only for reference; please refer to the actual product

NO.	Description
1	Coping
2	Supporting Board(Condenser)
3	Inhalation Tube
4	Sponge(Condenser)
5	Temperature Sensor Support
6	Condenser Assy
7	Temp Sensor Sleeving
8	Sensor Insert
9	Right Side Plate
10	Earthing Plate Sub-assy
11	Wire Clamp
12	Electric Expansion Valve Sub-Assy
13	Electric Expand Valve Fitting

NO.	Description
14	Handle
15	Silencer
16	Cut-off valve
17	Strainer (fork shape)
18	Cut-off valve
19	Valve Support
20	Discharge Tube
21	Compressor and Fittings
22	Chassis Sub-assy
23	Motor Support
24	Brushless DC Motor
25	Axial Flow Fan
26	Cabinet

NO.	Description
27	Front Grill
28	Drainage Joint(ODU)
29	Left Side Plate
30	Clapboard
31	Electric Box Assy
32	Electric Box
33	Main Board
34	Electric Box Cover
35	Terminal Board
36	Temperature Sensor
37	Radiator
38	Valve Cover

Some models may not contain some parts, please refer to the actual product.



The component is only for reference; please refer to the actual product

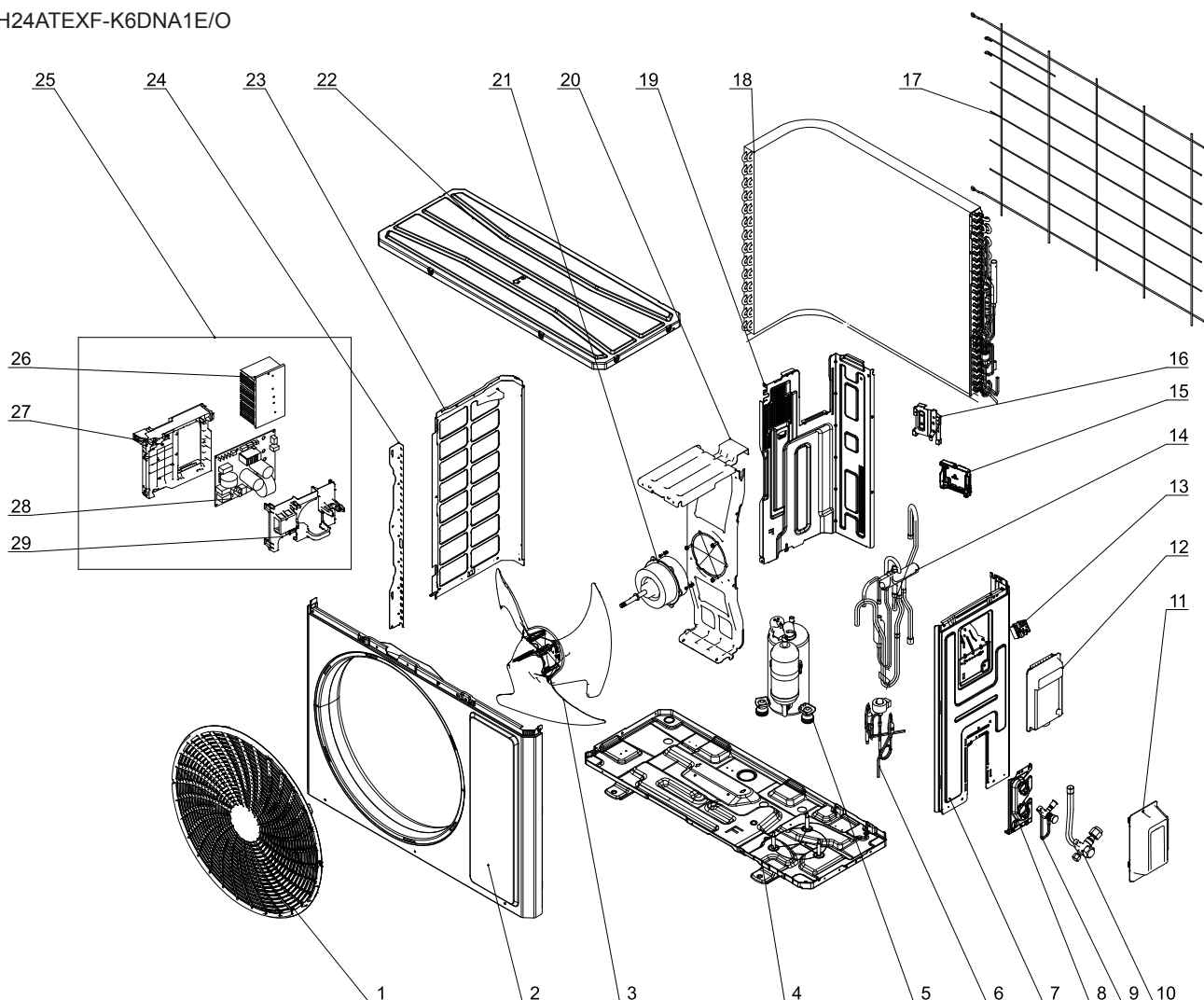
NO.	Description
1	Grill
2	Front Panel
3	Axial Flow Fan
4	Chassis Sub-assy
5	Compressor and Fittings
6	Electronic Expansion Valve
7	Right Side Plate
8	Valve Support
9	Cut off Valve
10	Cut off Valve

NO.	Description
11	Valve Cover
12	Handle
13	Terminal Board
14	Inhalation Tube Sub-assy
15	Discharge Tube Sub-assy
16	Mounting Plate
17	Mounting rack
18	Rear Grill
19	Condenser Assy
20	Clapboard Assy

NO.	Description
21	Motor Support
22	Motor
23	Top Cover Assy
24	Left Side Plate
25	Condenser Left Border Plate
26	Electric Box Assy
27	Radiator
28	Electric Box
29	Main Board
30	Electric Box Cover

Some models may not contain some parts, please refer to the actual product.

GWH24ATEXF-K6DNA1E/O



The component is only for reference; please refer to the actual product

NO.	Description
1	Grill
2	Front Panel
3	Axial Flow Fan
4	Chassis Sub-assy
5	Compressor and Fittings
6	Electronic Expansion Valve
7	Right Side Plate
8	Valve Support
9	Cut off Valve
10	Cut off Valve
11	Valve Cover
12	Handle
13	Terminal Board
14	4-Way Valve Assy
15	Mounting Plate

NO.	Description
16	Mounting rack
17	Rear Grill
18	Condenser Assy
19	Clapboard Assy
20	Motor Support
21	Motor
22	Top Cover Assy
23	Left Side Plate
24	Condenser Left Border Plate
25	Electric Box Assy
26	Radiator
27	Electric Box
28	Main Board
29	Electric Box Cover

Some models may not contain some parts, please refer to the actual product.