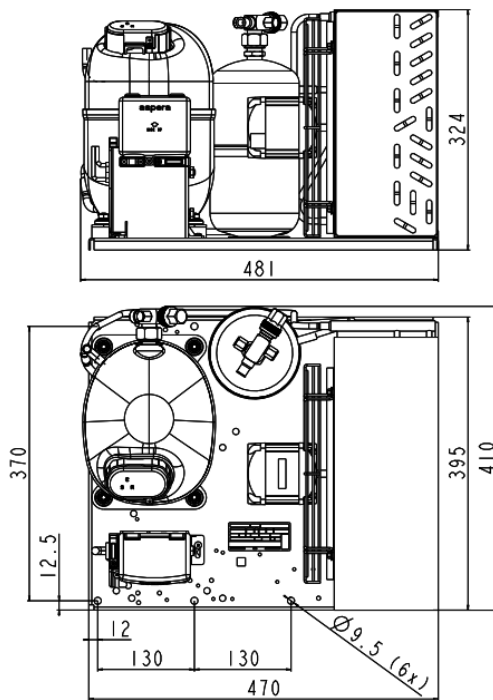


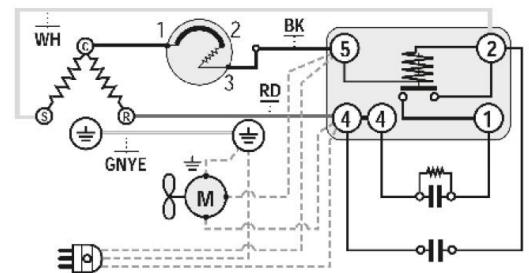
### GENERAL DATA

<b>Application:</b>	M/HBP
<b>Refrigerant:</b>	R134a
<b>Expansion Device:</b>	C-V
<b>Weight:</b>	37 kg
<b>Receiver:</b>	2.3 liter
<b>Voltage:</b>	<b>at 50 Hz</b> 220 - 240 V
<b>Height:</b>	324 mm
<b>Length:</b>	481 mm
<b>Width:</b>	410 mm
<b>Institute Approvals:</b>	<b>CE</b>

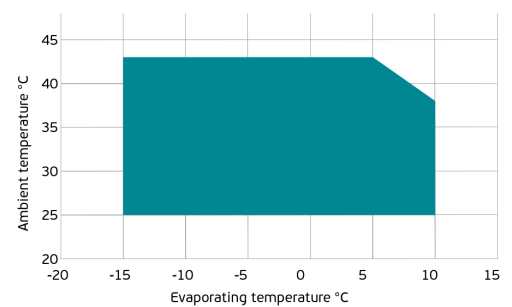
### EXTERNAL DIMENSIONS



### WIRING DIAGRAM



### OPERATING ENVELOPE



### COMPONENTS (SPARE PARTS)

<b>Condenser:</b>	3R12T	2451140
<b>Valve Suction:</b>	5/8" SAE (3)	2110054
<b>Compressor:</b>	NJ6226Z	142HA15..AC

<b>Fan Kit:</b>	34W 275/31°/5B	1996583
<b>Valve Discharge:</b>	3/8" SAE (3)	2110049
<b>Electrical Kit:</b>	ELKOM NJ6226	142HA1504A

For additional accessories please contact our technical support

### NOISE DATA

**Sound power level:** 0 dB (A)

**Sound pressure level dB (A):**

0 (at 1m) | 0 (at 5m) | 0 (at 10m)

Maximum noise at maximum ambient temperature,  
20°C return gas, configurations voltage and frequency.

### ELECTRICAL DATA

**Motor Type:** CSR

**Locked Rotor Amperage**

**(RLA):**

**Max.Current:** 6.75 A

At maximum evaporating temperature and maximum  
ambient temperature.

### FAN MOTOR

**Number:** 1

**Shaft Power:** 34 W

**Air Flow:** 640 m<sup>3</sup>/hod

**Blade Diameter:** 275 mm

### PERFORMANCE DATA

Standard: EN13215 / return gas 20°C, subcooling 3K

50 Hz

	Evaporating Temperature (°C)	Cooling Capacity (W)	Power Consumption (W)	Current Consumption (A)	Efficiency (W/W)
25°C Ambient Temperature	10°C	3 225	1422.82	6.98	2.27
	5°C	2 822	1264.52	6.29	2.23
	0°C	2 432	1121.14	5.68	2.17
	-5°C	2 056	992.69	5.14	2.07
	Rated point -10°C	1 691	879.17	4.68	1.92
	-15°C	1 340	780.58	4.30	1.72
32°C Ambient Temperature	10°C	2 932	1466.83	7.19	2.00
	5°C	2 566	1303.62	6.49	1.97
	0°C	2 211	1155.81	5.86	1.91
	-5°C	1 869	1023.39	5.31	1.83
	Rated point -10°C	1 538	906.36	4.83	1.70
	-15°C	1 218	804.72	4.43	1.51
43°C Ambient Temperature	5°C	2 195	1390.22	6.86	1.58
	0°C	1 898	1240.26	6.20	1.53
	-5°C	1 596	1093.20	5.57	1.46
	Rated point -10°C	1 302	956.13	5.00	1.36
	-15°C	1 032	836.15	4.53	1.23