

CENTRIFUGAL TANK PUMP



The Freddox Si-1800 pump is designed to be easily installed whatever the layout of the premises. Capable of evacuating up to 500 l/h, the Si-1800 pump is suitable for air conditioning units and industrial refrigeration displays.

Strong, the Si-1800 tolerates charged, high temperature and acidic condensates (pH>2.5) produced by gas condensing boilers.

Features

High performance

- Can discharge condensates up to 5mtrs vertically and up to 30mtrs horizontally
- Up to 500 l/h, for shorter running time
- Low sound level – quiet operation

Easy hydraulic connection

- Quarter turn easily removable check valve, designed to facilitate int. Ø 10 mm (3/8") hose plug in.
- 4 inlet holes Ø 30 mm (1"3/16)

Installation in any place

- Pump can be floor mounted, attached on a wall or hanging from a ceiling.

High resistance

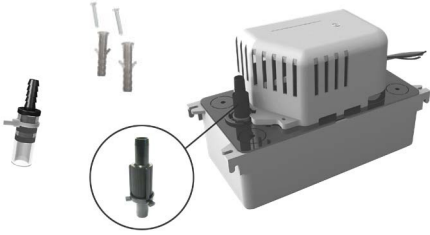
- Oil and acid resistant float
- Mechanical structure resistant to shocks

Versatile

- Easily removable tank and reversible pump, to allow mounting rather on the left or on the right of the application and choosing the side of the water exit.

TECHNICAL DATA

Kit Contents



- One-piece centrifugal pump with tank (2 L)
- Integrated barb end check valve ext. Ø 10 mm (3/8")
- Power cable: 1.5 m bare ends
- Straight connector ext. Ø 10 mm (3/8") – ext. Ø 6 mm (1/4")
- 2 screws + 2 plugs

Applications



- Column air conditioning units
- Multi cassettes
- Gas condensing boilers
- High efficiency gas furnaces
- Refrigerated display cabinets
- Evaporators
- Ducted units

Technical Specifications

PROPERTY	SPECIFICATION
Max. flow rate	500 l/h
Max. discharge head	5 m
Max pressure	5.4 m (flowrate = 0)
Sound level	Sound level in application at 1m (3.3 ft): 45 dBA
Mains supply	230 V~ 50 Hz - 70 W - 0.67 A
Detection levels	ON: 43 mm; OFF: 27 mm; Alarm: 56 mm
Max. condensate temperature	T < 65 °C (80 °C - 1 min.)
Max. condensate acidity	pH > 2.5 (Gas condensing boilers)
Thermal protection (overheating)	105 °C (auto-reset)
Operating conditions	30%: 3 s ON – 7 s OFF
Protection	IP20
Safety standards	CE, EAC, UKCA
RoHS directive	Compliant
WEEE directive	Compliant
Pump dimensions	L 279 x W 130 x H 171 mm
Tank dimensions	L 246 x W 130 x H 82 mm
Box dimensions	L 285 x W 135 x H 185 mm
Weight (including box)	2.5 kg

FREDDOXCPUMP_0923

TECHNICAL DATA

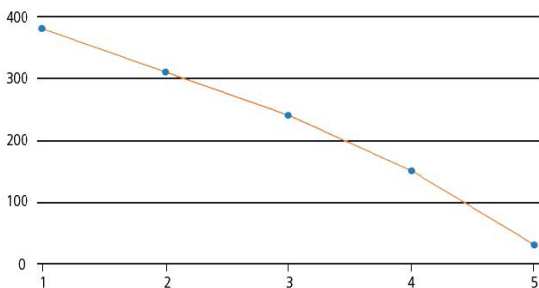
Accessories

NAME	PART
 Clear PVC tubing int. Ø 10 mm (3/8"), 25 m roll	ACC00911 ACC00915 (Braided)
 Inlet adaptors Ø int. 24/25 mm Ø int. 32 mm Ø int. 40 mm	ACC00936 Ø int. 32 mm ACC00937 Ø int. 40 mm ACC00938
 Check valve For replacement ext. Ø 10 mm (3/8")	ACC00925

Actual flow rates (l/h)

Total tube length (Ø int. 10 mm, 3/8")

VERTICAL DISCHARGE HEAD	5 M	10 M	20 M	30 M
1 m	380	300	240	190
2 m	310	260	200	150
3 m	240	200	145	110
4 m	150	130	80	60
5 m	30	20	0	0



FREDDOXCPUMP_0923