

FREDDOX DRIERS

Freddox driers have a solid core totally made of 3A molecular sieves, and special binding agent in appropriate portions. This provides a superlative capacity for water absorption while also offering some deacidifying characteristics.

The manufacturing process gives a considerable compactedness and stoutness to the Freddox driers so that they are resistant to shocks and abrasions. The shape of the block is designed in order to offer the maximum possible surface area to the incoming fluid. The internal cavity is also positioned in such a way as to have a uniform wall thickness. As a result, the fluid encounters a constant strength at all points, flows linearly through the block, and ensures efficient dehydration and minimum charge loss.

Features

- 100% 3A Molecular Sieve core will not deplete oil additives
- High drying capacity minimises the risk of acid formation
- Recommended for use with HFO, HC, HFC and HCFC refrigerants including R32, R290 and R600a



TECHNICAL DATA

ITEM NUMBER	MODEL NUMBER	CONNECTION SIZE / TYPE (l)	MAX PRESSURE (BAR)	COOLING CAPACITY [kW] R134a	COOLING CAPACITY [kW] R32	COOLING CAPACITY [kW] R404A	COOLING CAPACITY [kW] R407C	COOLING CAPACITY [kW] R410A	COOLING CAPACITY [kW] R448A	DIAMETER (mm)	LENGTH (mm)
GDFD1032C	DSC032S	1/4" Solder	47	9.26	14.28	6.61	9.54	9.79	8.81	41.5	101
GDFD1033C	DSC033S	3/8" Solder	47	17.15	26.44	12.23	17.67	18.12	16.31	41.5	105
GDFD1052C	DSC052S	1/4" Solder	47	11.65	17.96	8.31	12.00	12.31	11.07	63.5	112
GDFD1053C	DSC053S	3/8" Solder	47	18.16	28.00	12.95	18.71	19.19	17.27	63.5	116
GDFD1082C	DSC082S	1/4" Solder	47	11.19	17.25	7.98	11.53	11.82	10.64	63.5	133
GDFD1083C	DSC083S	3/8" Solder	47	19.90	30.68	14.19	20.51	21.03	18.92	63.5	137
GDFD1084C	DSC084S	1/2" Solder	47	24.94	38.46	17.79	25.70	26.36	23.72	63.5	137
GDFD1163C	DSC163S	3/8" Solder	47	21.46	33.09	15.30	22.11	22.67	20.40	63.5	157
GDFD1164C	DSC164S	1/2" Solder	47	29.71	45.81	21.19	30.62	31.40	28.25	63.5	157
GDFD1165C	DSC165S	5/8" Solder	47	35.30	54.44	25.18	36.38	37.31	33.57	63.5	163
GDFD1305C	DSC305S	5/8" Solder	47	43.56	67.17	31.07	44.89	46.03	41.42	76.0	241

ITEM NUMBER	MODEL NUMBER	CONNECTION SIZE / TYPE (l)	MAX PRESSURE (BAR)	COOLING CAPACITY [kW] R134a	COOLING CAPACITY [kW] R32	COOLING CAPACITY [kW] R404A	COOLING CAPACITY [kW] R407C	COOLING CAPACITY [kW] R410A	COOLING CAPACITY [kW] R448A	DIAMETER (mm)	LENGTH (mm)
GDFD1032A	DSC032	1/4" Flare	47	7.15	11.03	5.10	7.37	7.56	6.80	41.5	109
GDFD1033A	DSC033	3/8" Flare	47	16.78	25.88	11.97	17.29	17.73	15.96	41.5	119
GDFD1052A	DSC052	1/4" Flare	47	7.52	11.59	5.36	7.75	7.95	7.15	63.5	120
GDFD1053A	DSC053	3/8" Flare	47	17.51	27.01	12.49	18.05	18.51	16.66	63.5	130
GDFD1082A	DSC082	1/4" Flare	47	7.34	11.31	5.23	7.56	7.75	6.98	63.5	141
GDFD1083A	DSC083	3/8" Flare	47	19.44	29.98	13.86	20.03	20.54	18.49	63.5	151
GDFD1084A	DSC084	1/2" Flare	47	23.57	36.34	16.81	24.29	24.90	22.41	63.5	156
GDFD1162A	DSC162	1/4" Flare	47	8.25	12.73	5.89	8.51	8.72	7.85	63.5	161
GDFD1163A	DSC163	3/8" Flare	47	19.53	30.12	13.93	20.13	20.64	18.57	63.5	171
GDFD1164A	DSC164	1/2" Flare	47	25.22	38.89	17.99	25.99	26.65	23.98	63.5	176
GDFD1165A	DSC165	5/8" Flare	47	33.65	51.89	24.00	34.68	35.56	32.00	63.5	186
GDFD1303A	DSC303	3/8" Flare	47	20.45	31.53	14.58	21.07	21.61	19.45	76.0	249
GDFD1304A	DSC304	1/2" Flare	47	28.70	44.26	20.47	29.58	30.33	27.29	76.0	254
GDFD1305A	DSC305	5/8" Flare	47	37.23	57.41	26.55	38.37	39.34	35.40	76.0	264

Rating capacities in accordance to Standard ARI 710-2009 at -15°C evaporating temperature, +30°C liquid temperature and total pressure drop $\Delta p = 7kPa$ / 14kPa

FREDDOXDRIERS_1023

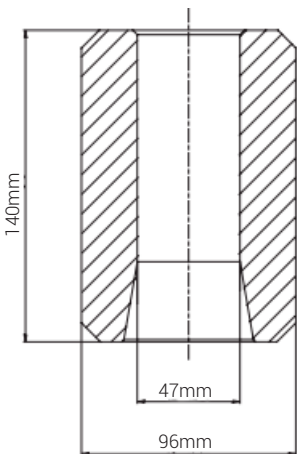
TECHNICAL DATA

WATER CAPACITY, DEHYDRATABLE CHARGE OF SINGLE BLOCK

ITEM NUMBER	DESCRIPTION	WATER CAPACITY AT + 24°C [g H ₂ O]					DEHYDRATABLE CHARGE AT + 24°C kg REFRIGERANT				
		R134a	R22	R404A	R407C	R410A	R134a	R22	R404A	R407C	R410A
GCFD3020B	100% MS Solid Core 48cu/in with Gasket (High Capacity)	82	75	84	67	73	88	81	90	72	79
GCFD3025B	80% MS 20% activated alumina 48cu/in with Gasket (Anti-Acid Burnout Core Drier)	70	64	71	57	64	75	69	77	61	67

WATER CAPACITY, DEHYDRATABLE CHARGE OF SINGLE BLOCK

ITEM NUMBER	DESCRIPTION	WATER CAPACITY AT + 52°C [g H ₂ O]					DEHYDRATABLE CHARGE AT + 52°C kg REFRIGERANT				
		R134a	R22	R404A	R407C	R410A	R134a	R22	R404A	R407C	R410A
GCFD3020B	100% MS Solid Core 48cu/in with Gasket (High Capacity)	71	60	78	54	59	76	65	84	58	63
GCFD3025B	80% MS 20% activated alumina 48cu/in with Gasket (Anti-Acid Burnout Core Drier)	60	51	66	46	50	65	55	71	50	54



FREDDOXDRIERS_1023