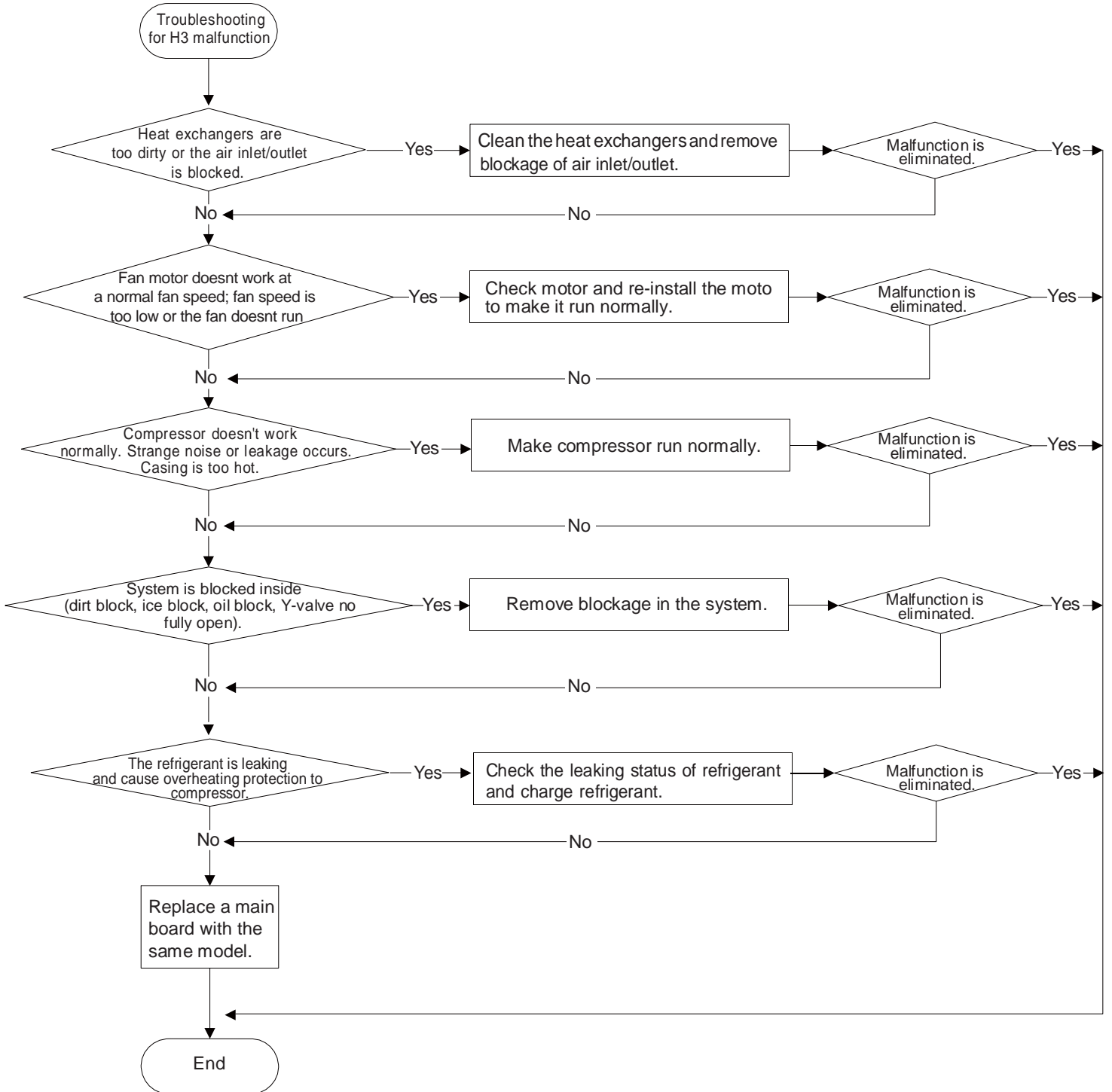


5. Overload malfunction H3

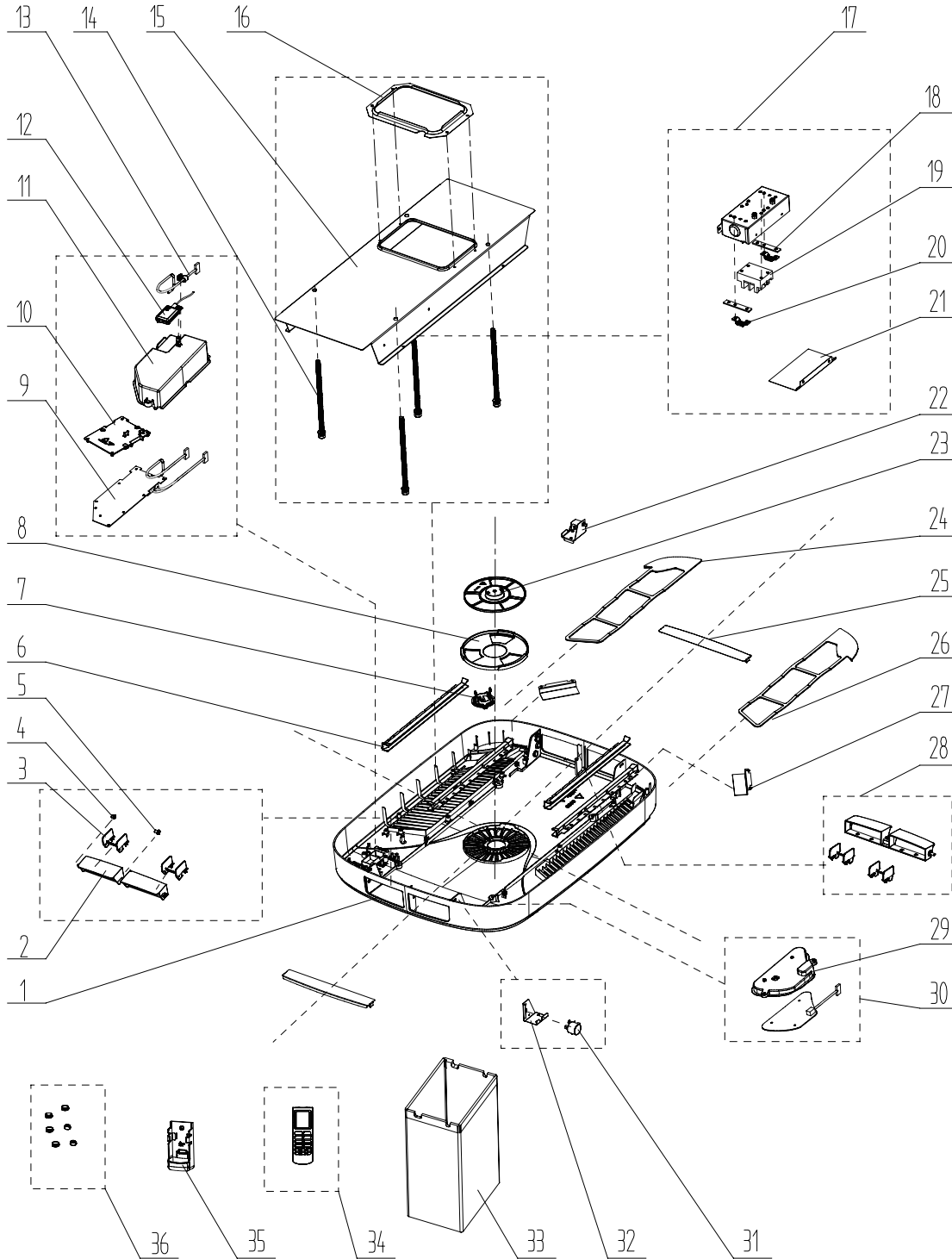


10. Exploded View and Parts List

10.1 Indoor Unit

GRH085DA-K3NA1A/I

GRH120DA-K3NA1A/I

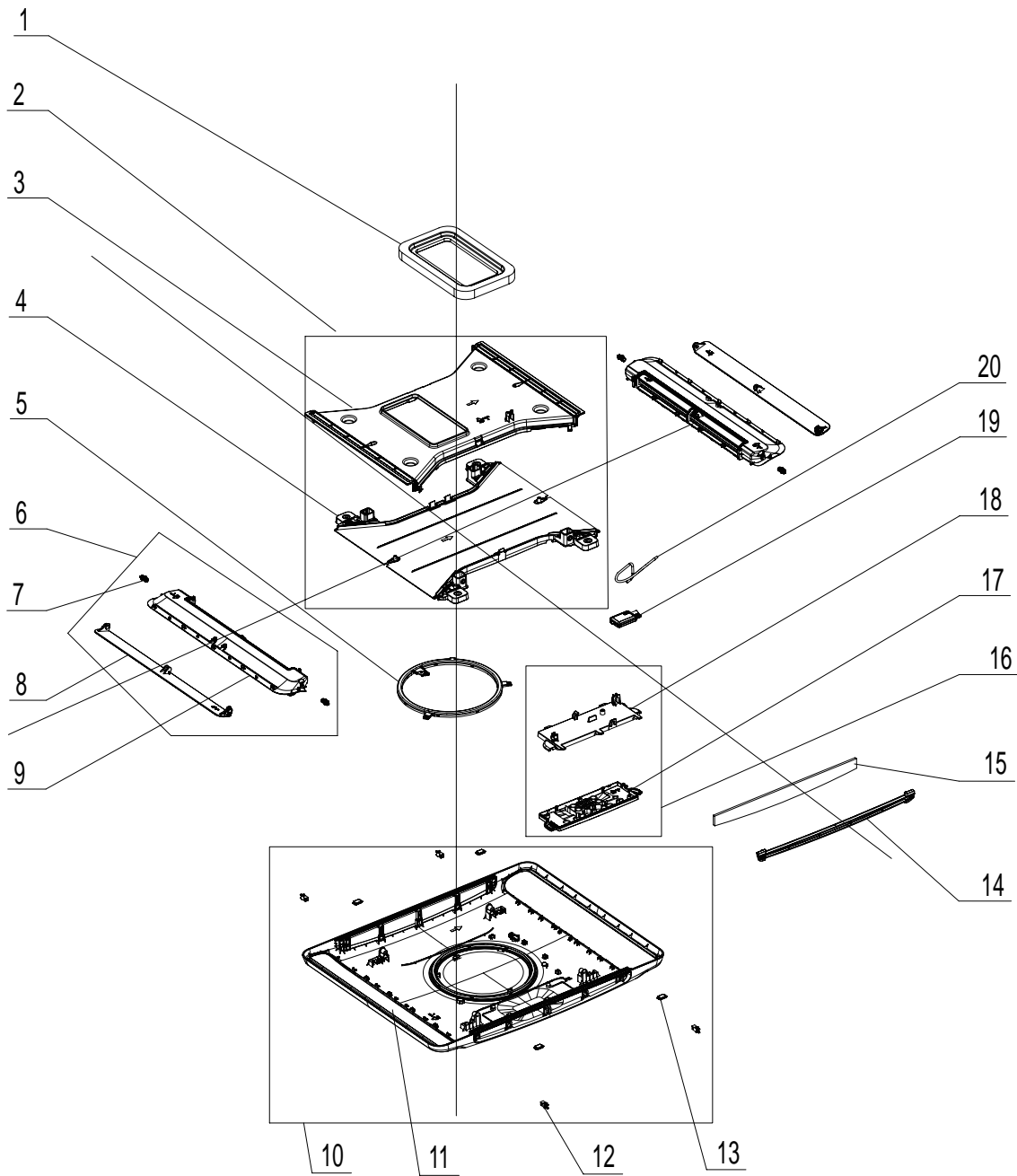


The component picture is only for reference; please refer to the actual product.

NO.	Description	Part Code		Qty
		GRH085DA-K3NA1A/I(WIFI)	GRH120DA-K3NA1A/I(WIFI)	
	Product Code	CU050N00901	CU050N01001	
1	Front Panel Assy	000003000047	000003000047	1
2	Guide Blade	10512269	10512269	1
3	Air Louver	10512270	10512270	2
4	Axile Bush	10542704	10542704	2
5	Axile Bush	10542037	10542037	1
6	Filter Guide	24242020	24242020	4
7	Swivel Switch	45052001	45052001	1
8	Air Intake Cover Sub-assy 1	22242206	22242206	1
9	Display Board	30562094	30562094	1
10	Cover Plate	200050000003	200050000003	1
11	Display box Sub-Assy	20302633	20302633	1
12	Detecting Plate	30110154	30110154	1
13	Temperature Sensor	390001997	390001997	1
14	Bolt	7021201701	7021201701	4
15	Mounting Plate Assy	01332030	01332030	1
16	Press plate of air vent	01383008	01383008	1
17	Electric Box Assy	20402472	20402472	1
18	Insulation Gasket	70410503	70410503	2
19	Terminal Board	42018094	42018094	1
20	Wire Clamp	71010103	71010103	2
21	Electric Box Cover	1252034	1252034	1
22	Louver Motor Assy	15002018	15002018	2
23	Air Intake Cover Sub-assy 2	22242207	22242207	1
24	Filter Sub-assy(Right)	11122149	11122149	1
25	Baffle Plate Sub-assy	01362019	01362019	2
26	Filter Sub-assy(Left)	11122148	11122148	1
27	Baffle Plate 2	01362020	01362020	2
28	Guide Louver	10512489	10512489	2
29	Display cover plate (LED)	200128000006	200128000006	1
30	Display Board	30562095	30562095	1
31	SteppingMotor	1521210702	1521210702	1
32	Motor Mounting Rack	01332027	01332027	1
33	Sponge (Air Flue)	12123237	12123237	1
34	Remote Controller	305001000034	305001000034	1
35	Remote Controll Holder	20120041	20120041	1
36	Screw Cover	760042000002	760042000002	6

Above data is subject to change without notice.

GRH085DA-K3NA2B/I GRH120DA-K3NA2B/I



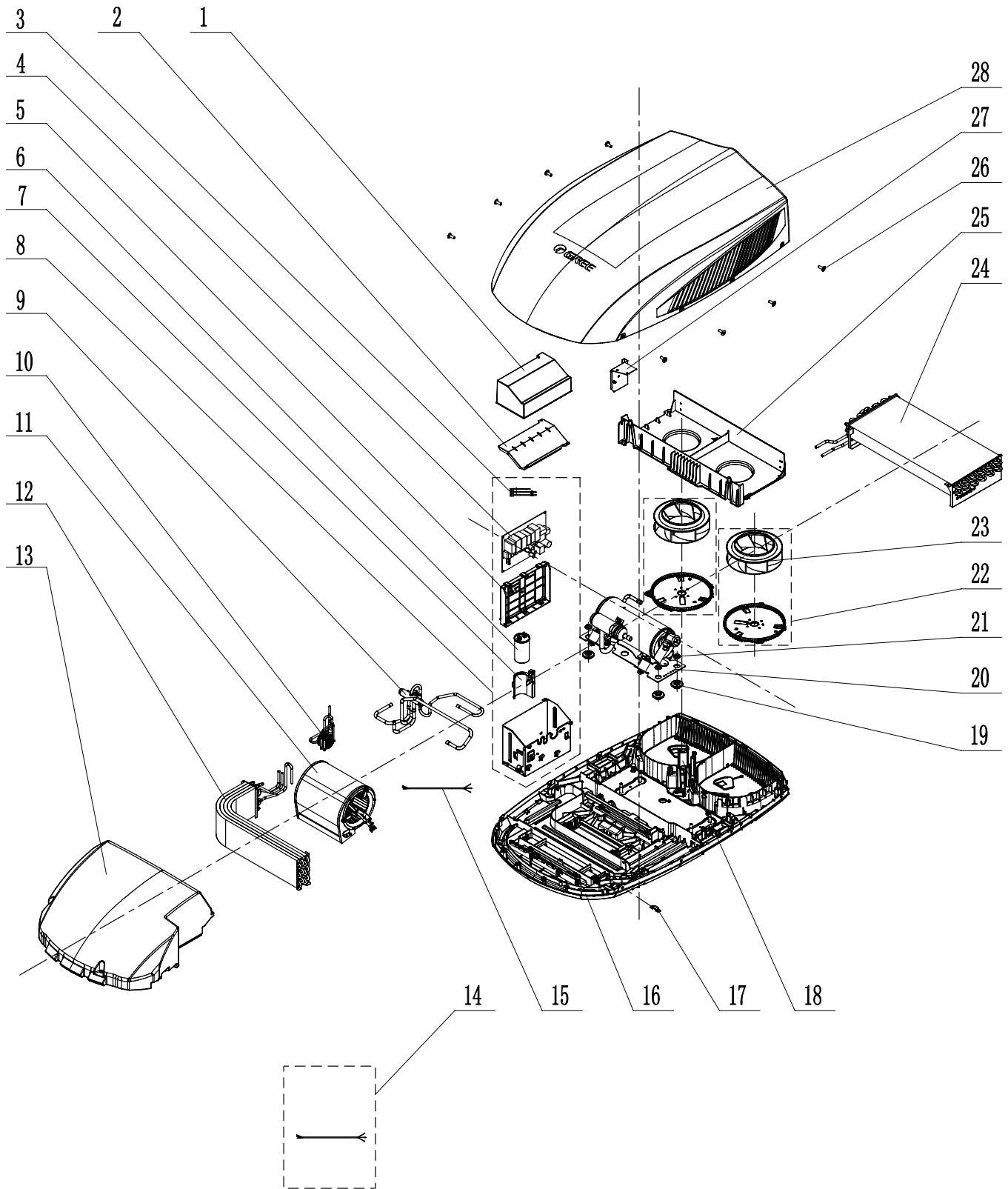
The component picture is only for reference; please refer to the actual product.

NO.	Description	Part Code		Qty
		GRH085DA-K3NA2B/I	GRH120DA-K3NA2B/I	
	Product Code	CU050N01100	CU050N01200	
1	Foam	120000060016	120000060016	1
2	Air Duct Sub-assy	017107060006	017107060006	1
3	Air Outlet Mid-panel	200120060001	200120060001	1
4	Base Plate	200008060001	200008060001	1
5	Display Module	340148060004	340148060004	1
6	Air Outlet Frame Sub-assy	000117060003	00011706000301	2
7	Shaft of Guide Louver	1054601501	10546015	4
8	Guide Louver	200004060013P	20000406001301	2
9	Air Outlet Frame	200095060002P	20009506000201	2
10	Front Panel Sub-Assy	209004060013	209004060013	1
11	Front Panel	200003060015T	200003060015T	1
12	Latch	70811002	70811002	4
13	Magnet Sub-assy	70844010	70844010	4
14	Front Grill	200226060009	200226060009	2
15	Healthy Filter	111008060002	111008060002	2
16	Display Board	300001060004	300001060004	1
17	Display Box	200028060003	200028060003	1
18	Display Box Cover	200097060003	200097060003	1
19	Detecting Plate	30110144	30110144	1
20	Temperature Sensor	390001997	390001997	1

Above data is subject to change without notice.

10.2 Outdoor Unit

GRH085DA-K3NA1A/O GRH120DA-K3NA1A/O

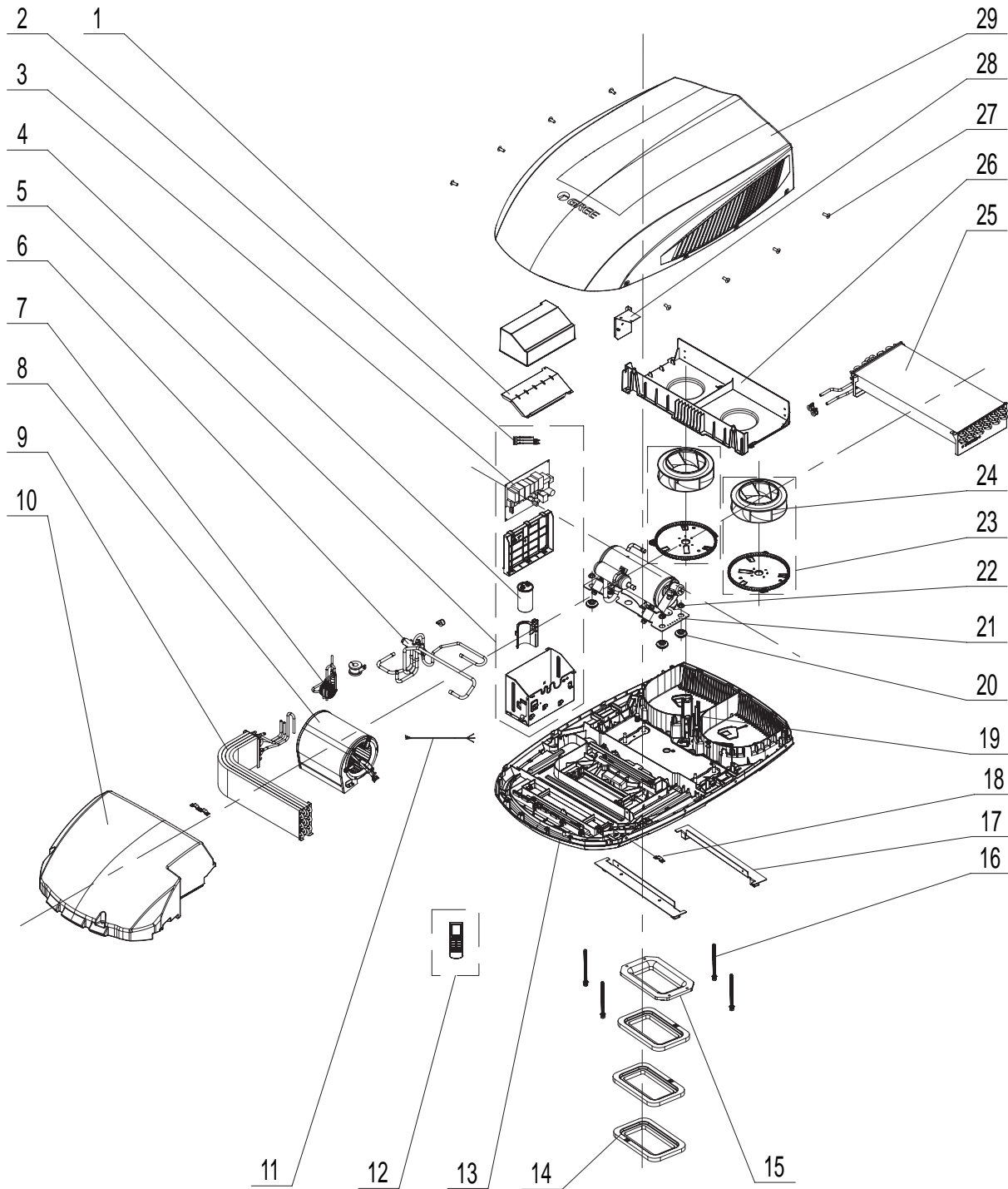


The component picture is only for reference; please refer to the actual product.

NO.	Description	Part Code		Qty
		GRH085DA-K3NA1A/O(WIFI)	GRH120DA-K3NA1A/O(WIFI)	
	Product Code	CU050W00901	CU050W01001	
1	Plastic box (electric box)	500026000001	500026000001	1
2	Electric Box Cover	012020000023	012020000023	1
3	Temperature Sensor	3900040301	3900040301	1
4	Main Board	30132227	30132227	1
5	Supporter	200114000006	200114000006	1
6	Capacitor Box	20116069	20116069	1
7	Capacitor CBB65	3300008102	3300008102	1
8	Electric Box Assy	100002000167	100002000167	1
9	4-Way Valve Assy	030152000101	030152000101	1
10	Capillary Sub-Assy	030006000142	030006000142	1
11	Centrifugal Blower sub-assy	150108000005	150108000005	1
12	Evaporator Assy	011001000075	011001000075	1
13	Foam Sub-Assy	120011000003	120011000003	1
14	Power Cord	4002028908	4002028908	1
15	Connecting Cable	4002050422	4002050422	1
16	Chassis Assy	209058000010	209058000010	1
17	Wire Clamp	71010103	71010103	1
18	Rubber Block	760005000003	760005000003	2
19	Compressor Gasket	009012000005	009012000005	4
20	Compressor and Fittings	00106113	00106113	1
21	Nut with Washer	70310014	70310014	4
22	Centrifugal fan assy	000052000021	000052000021	2
23	Centrifugal Blower sub-assy	150109000002	150109000002	1
24	Condenser Assy	011002000132	011002000132	1
25	Rear Clapboard	200030000001	200030000001	1
26	Fastener	200108000003	200108000003	8
27	Breakwater Sub-Assy	017061000002	017061000002	1
28	Cabinet	200173000001S	200173000001S	1

Above data is subject to change without notice.

GRH085DA-K3NA2B/O GRH120DA-K3NA2B/O



The component picture is only for reference; please refer to the actual product.