



Gree Wifi App Configuration

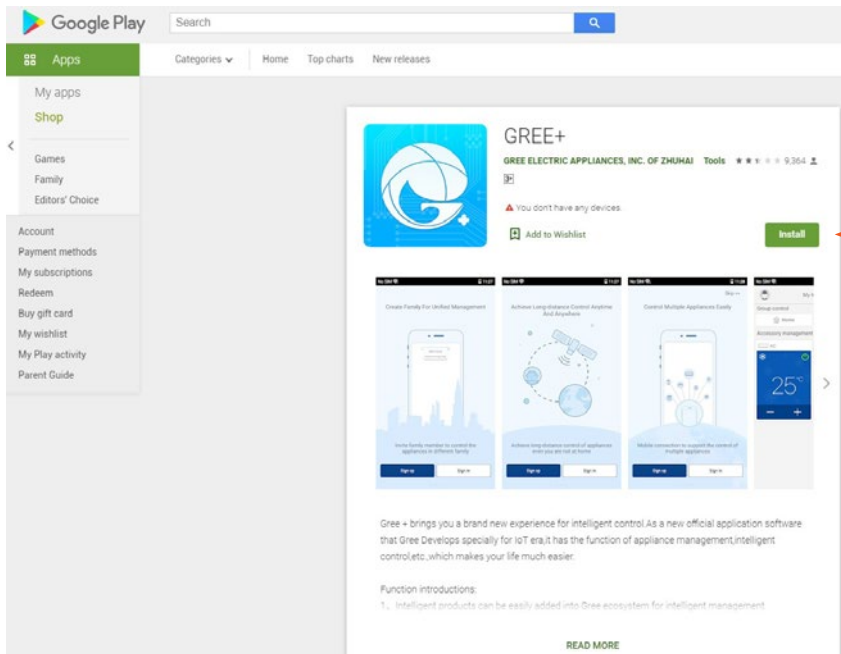
Gree App : GREE+



Download App from Playstore or AppStore

Playstore

<https://play.google.com/store/apps/details?id=com.gree.greeplus>

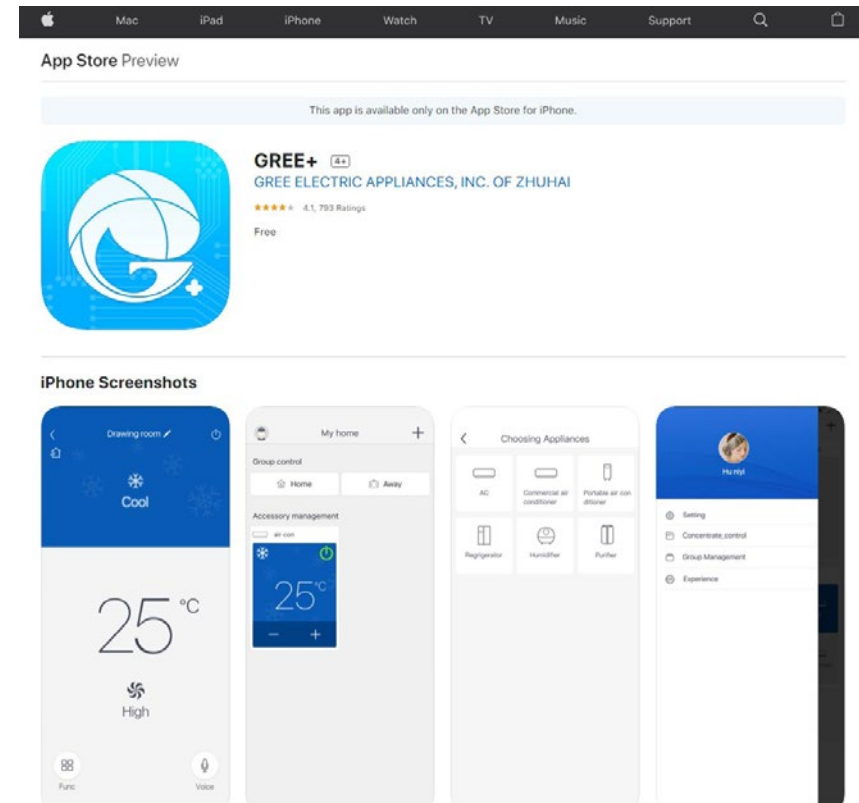


Install

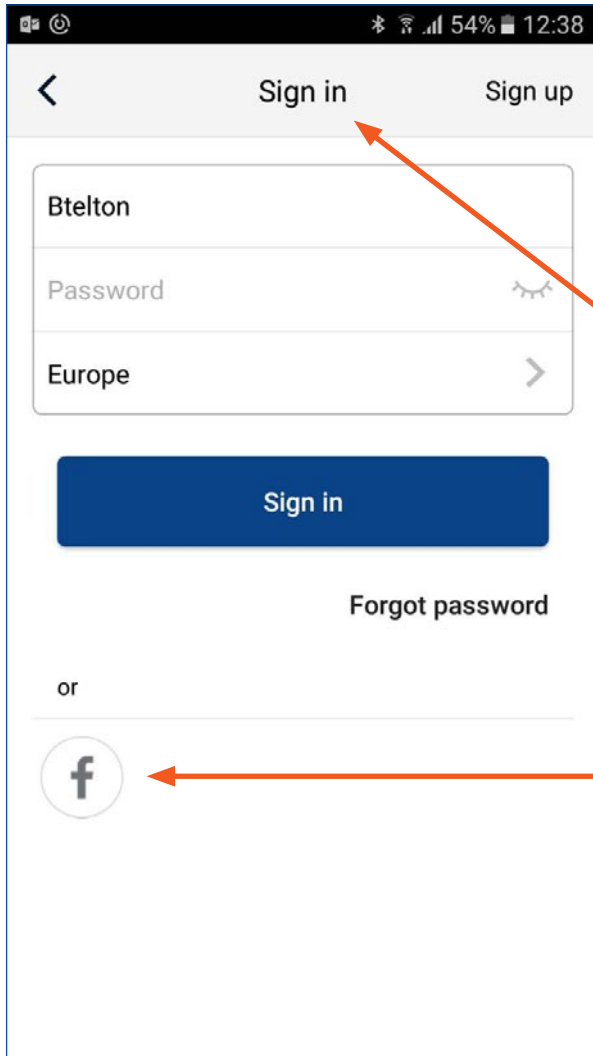


AppStore

<https://itunes.apple.com/us/app/gree/id1167857672?mt=8>



Sign In / Sing Up



Sign up if New User

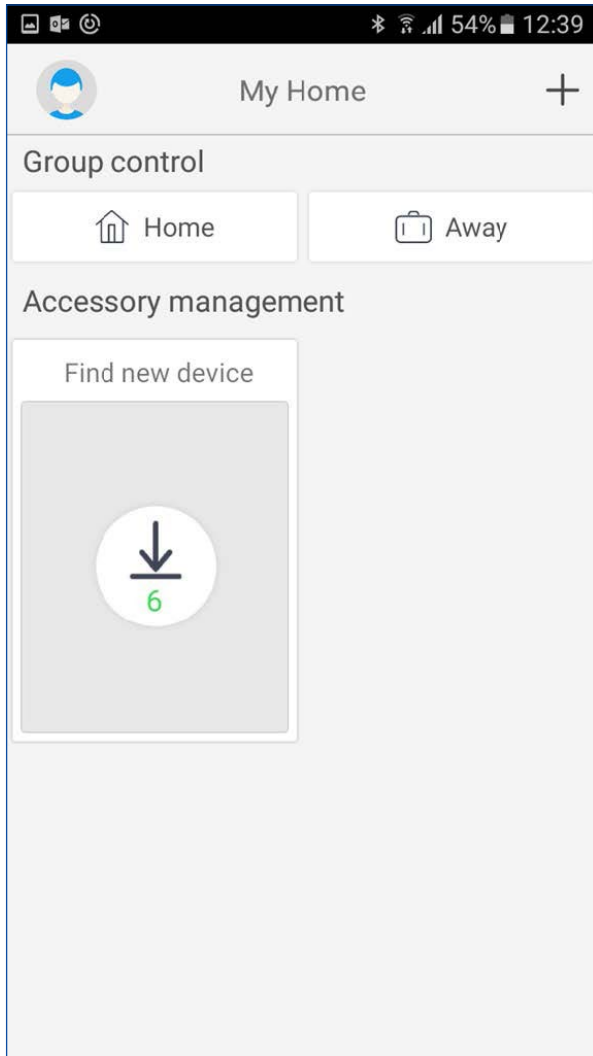
OR

Sign in with Username/Email & Password if already registered as User

OR

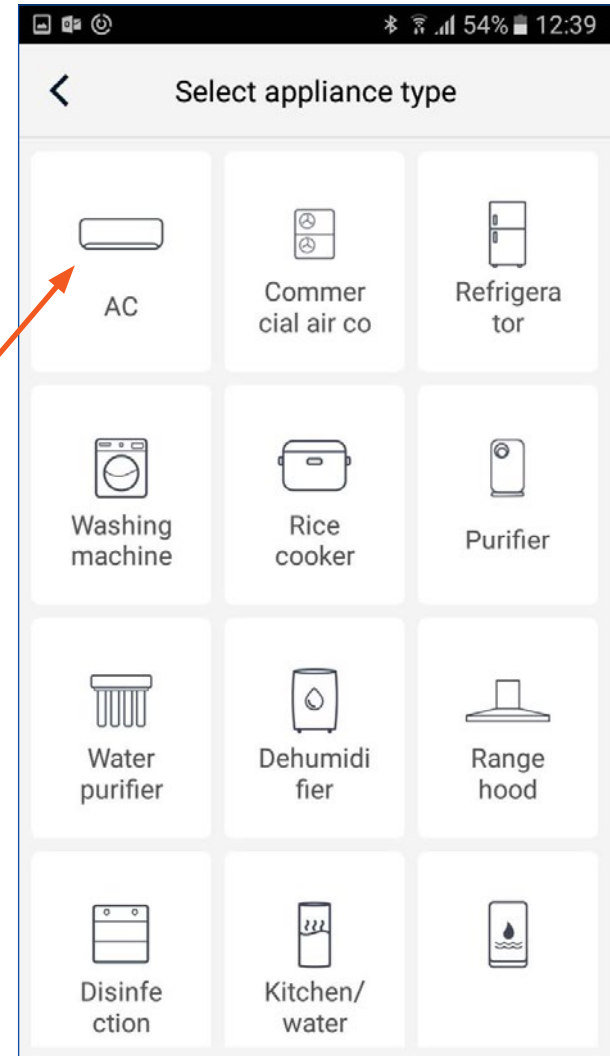
Sign in with Facebook Account

Add AC

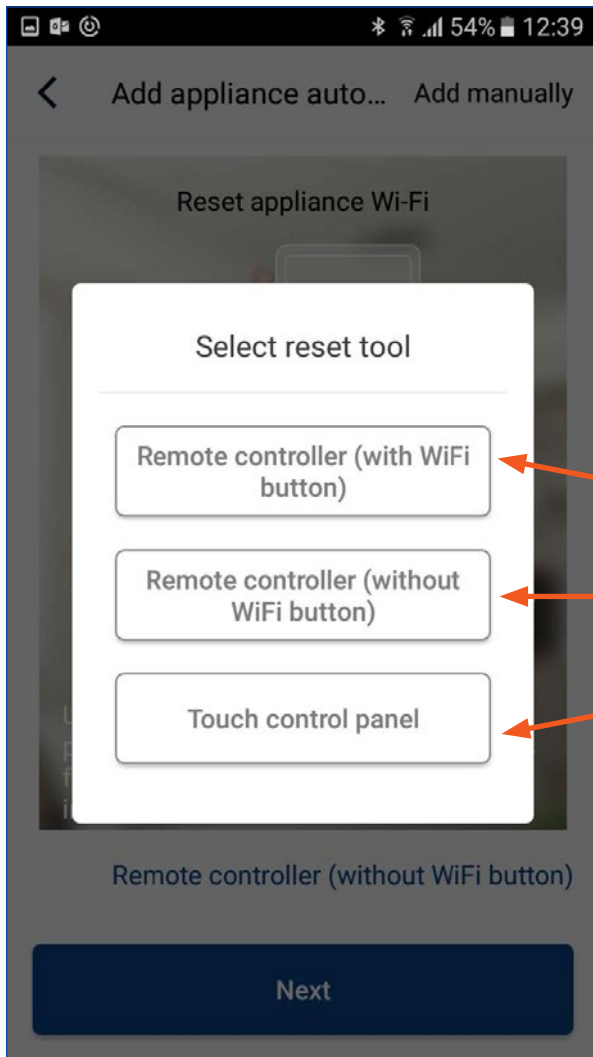


1
Click on +

2
Click to add AC

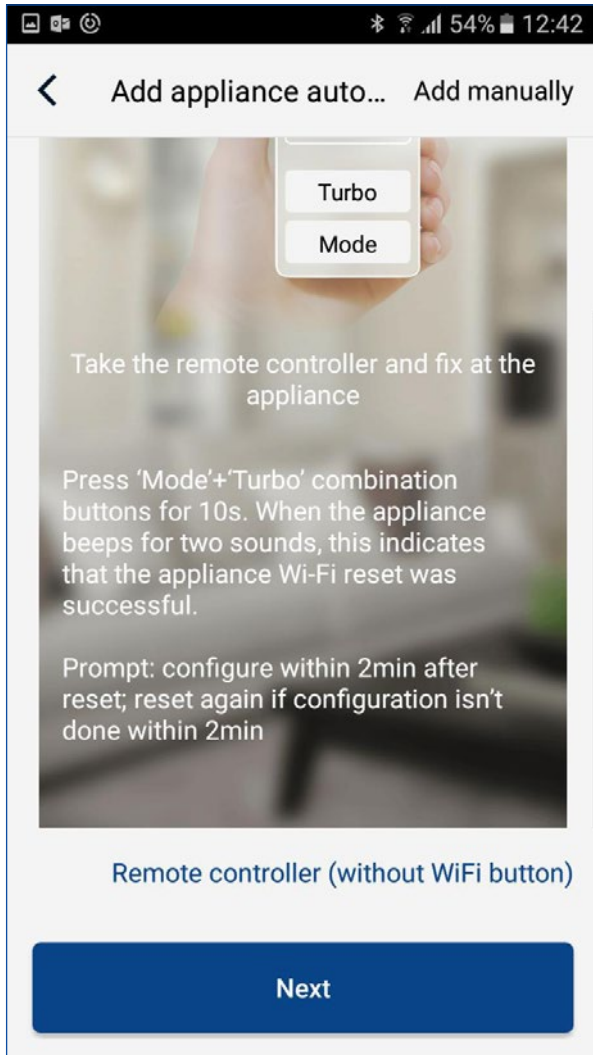


Reset Remote Controller



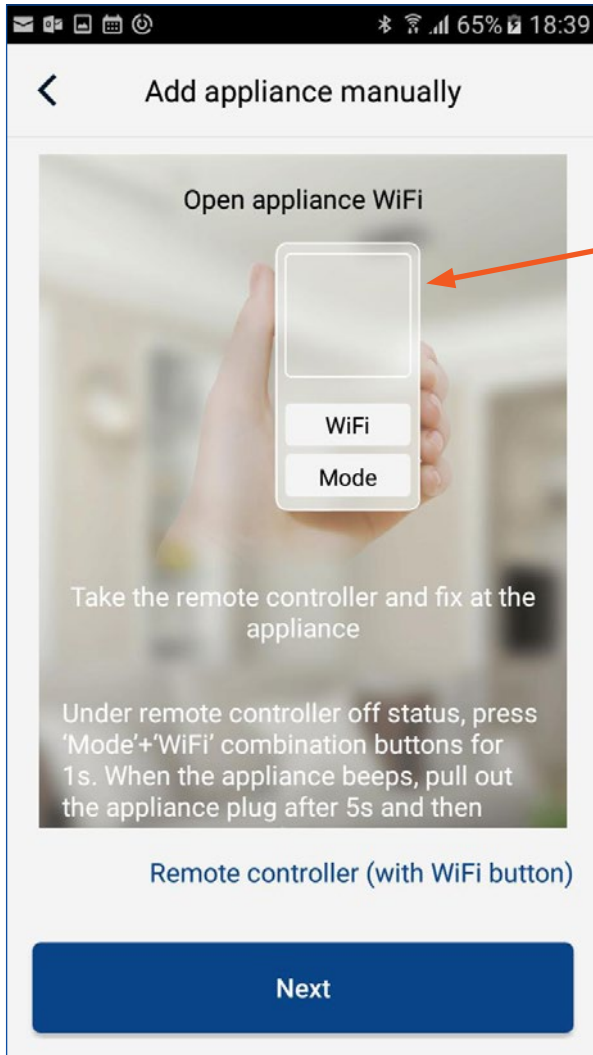
Click which type of Remote you have & click on the Tab accordingly

Add Appliance Manually



Click on 'Add manually'

Add Appliance Manually



Please put A/C on Standby Mode (OFF)

1

Press
Wifi & Mode button for 1 sec
Simultaneously

OR

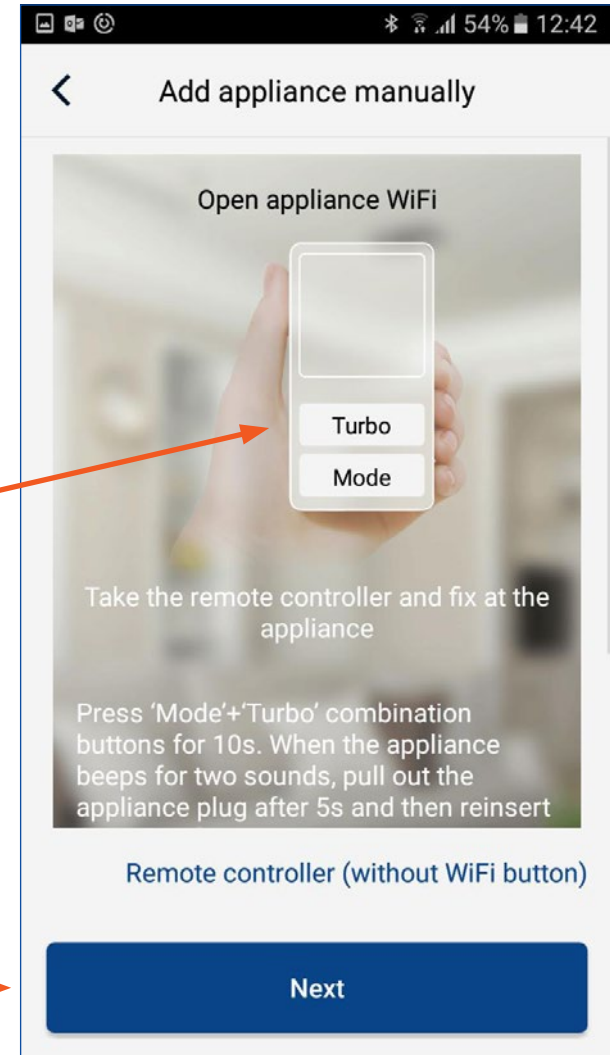
Press
Turbo and Mode buttons for 10 sec
Simultaneously

2

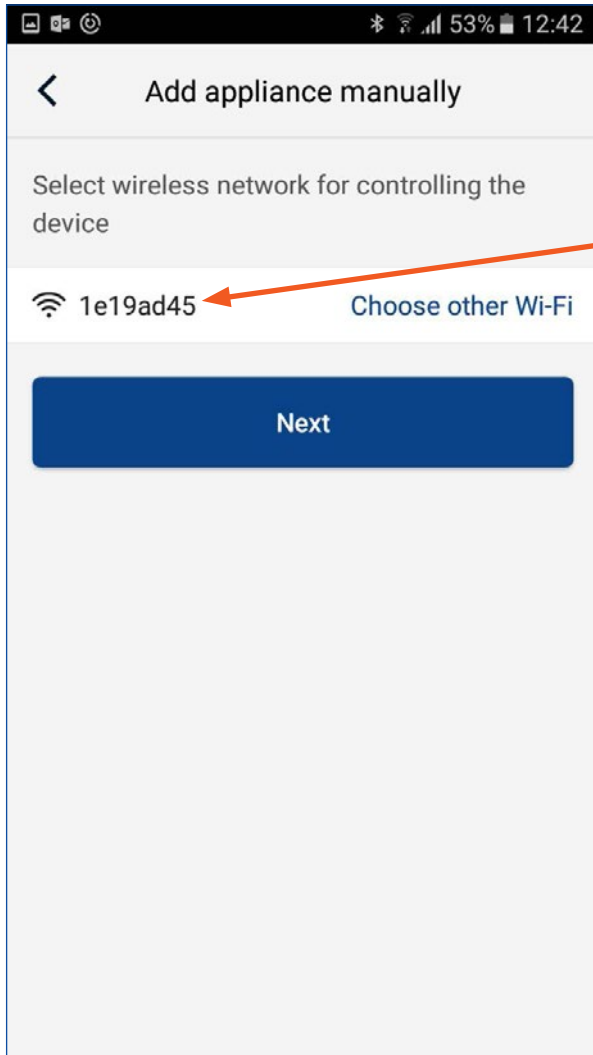
After 5 sec turn Off from power
supply (double pole switch)
& Turn On from after 3 sec

3

Click Next



Add Appliance Manually



For Android Devices
(find iOS steps in next pages)

**Wifi mac address will appear after few sec
from Reset of Power Supply (Please wait
until it shows)**

Click Next

Add Appliance Manually

53% 12:42

< Add appliance manually

Please select your home wireless router(5GHz Wi-Fi is not supported)

BTMain Choose other Wi-Fi

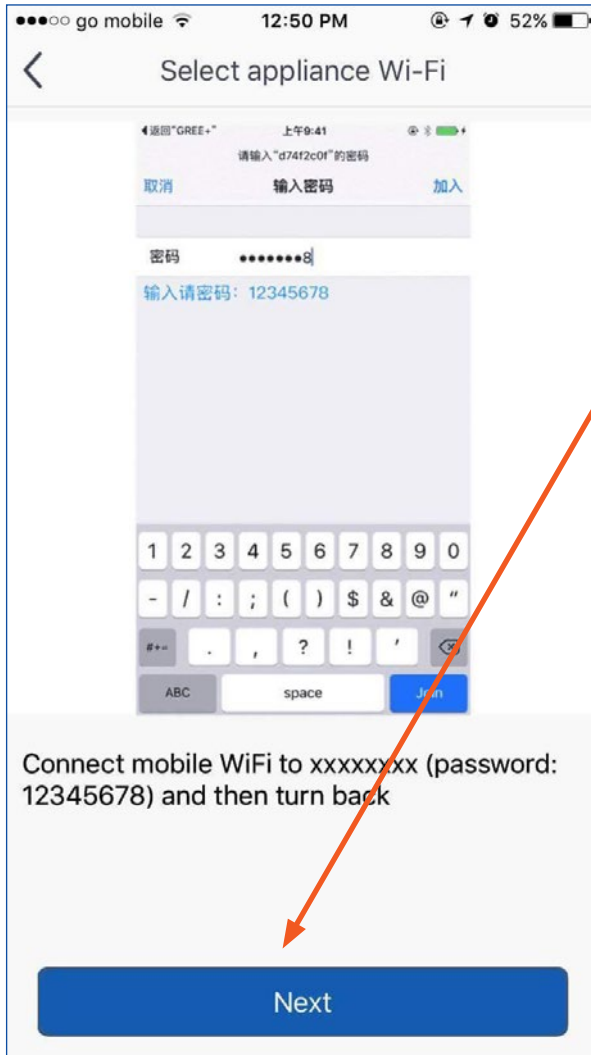
Memorize the password

Submit

Choose Home Wifi or other Wifi Networks and Input Password
N.B Make sure you stay connected to the same Wifi Network untill Configuration is complete

Click Next

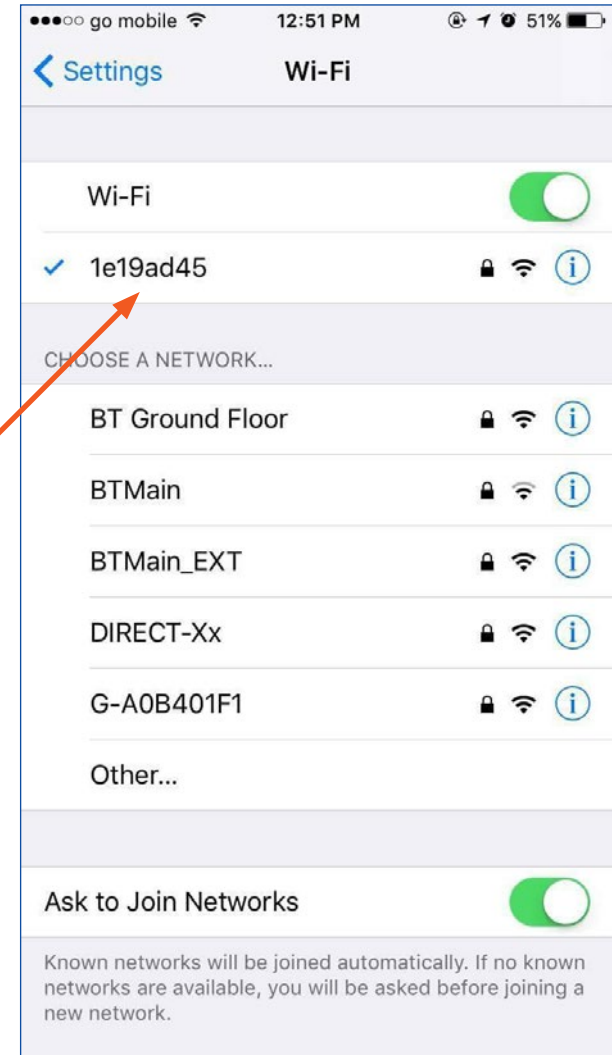
Add Appliance Manually



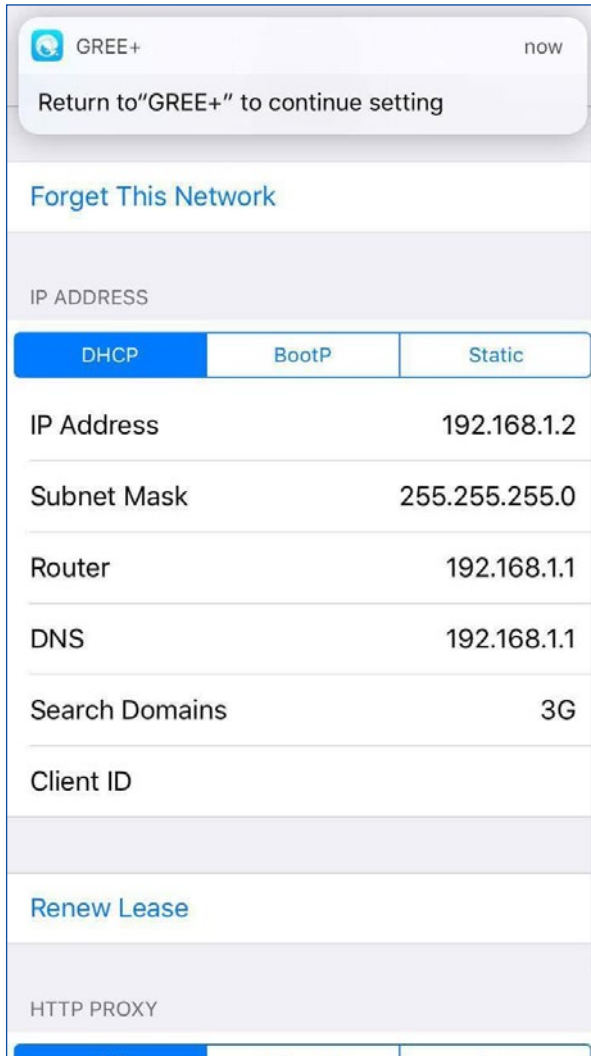
For iOS Devices

1 Click Next

2 Click on the Wifi Module mac Address of Appliance i.e. 1e19ad45 And input password default 12345678

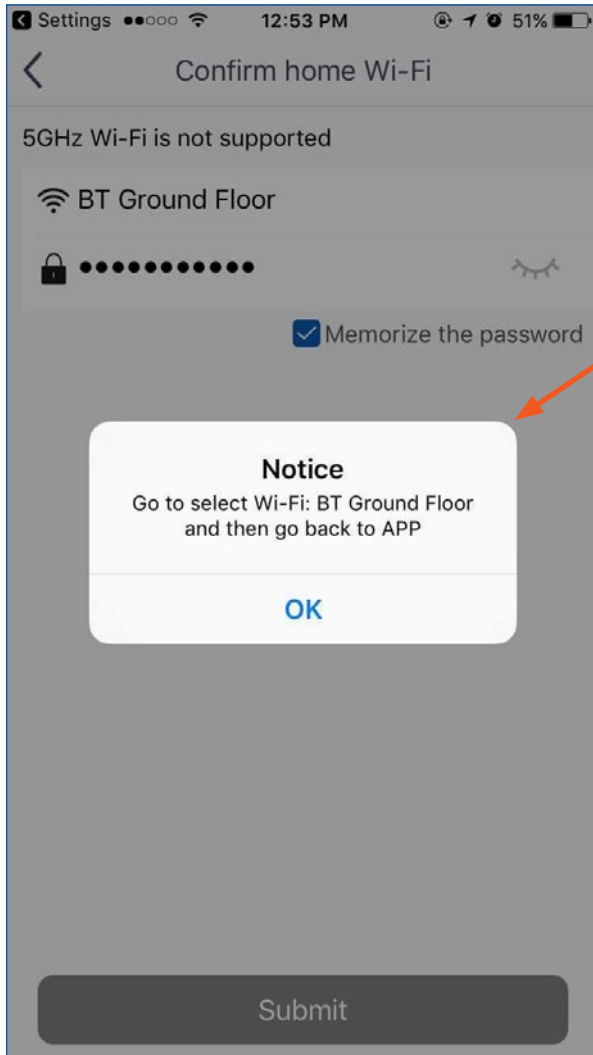


Add Appliance Manually

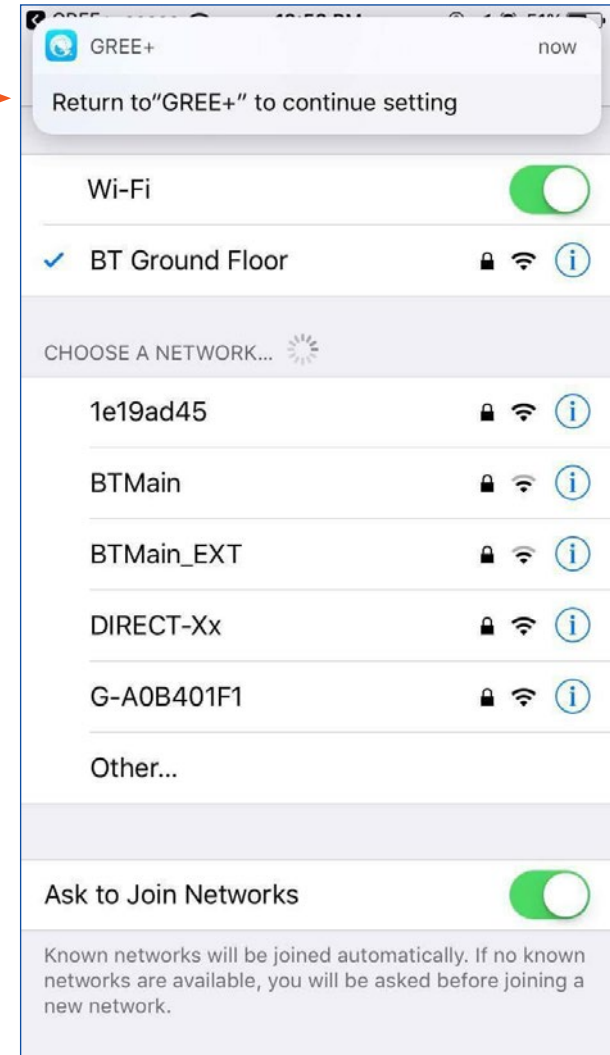


When window pops up please click this Tab to Return to App configuration

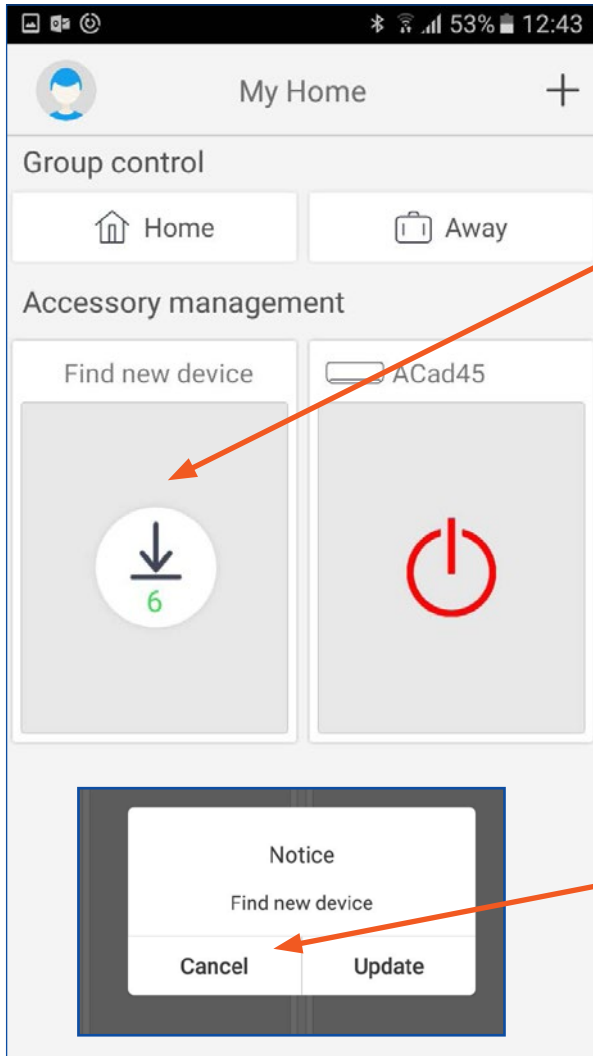
Add Appliance Manually



Next Step is to Select Home Wifi
or any Network Connection.
Input Password and return to
App GREE+



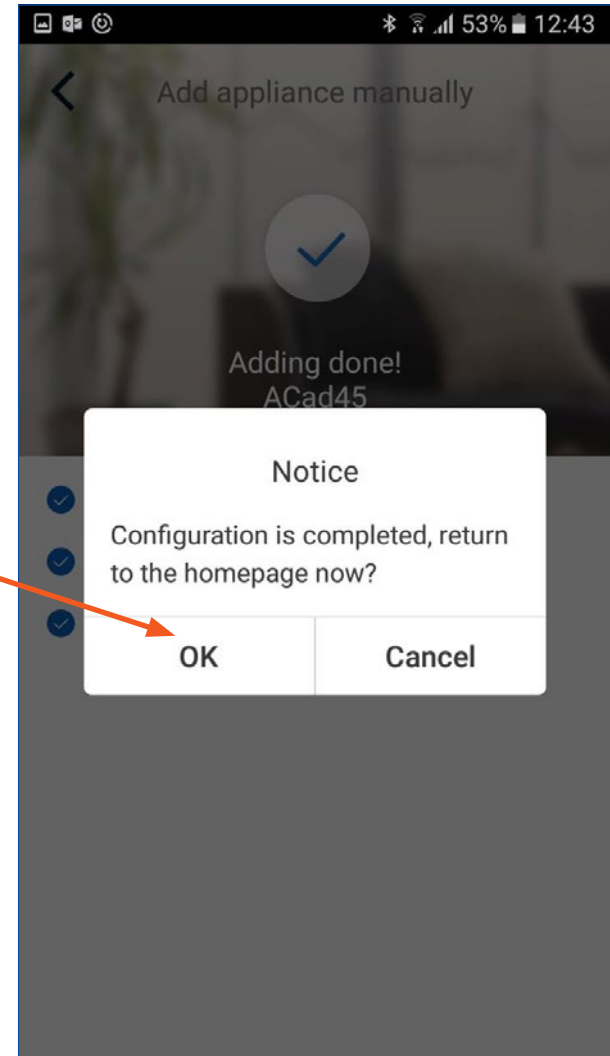
Add Appliance Manually



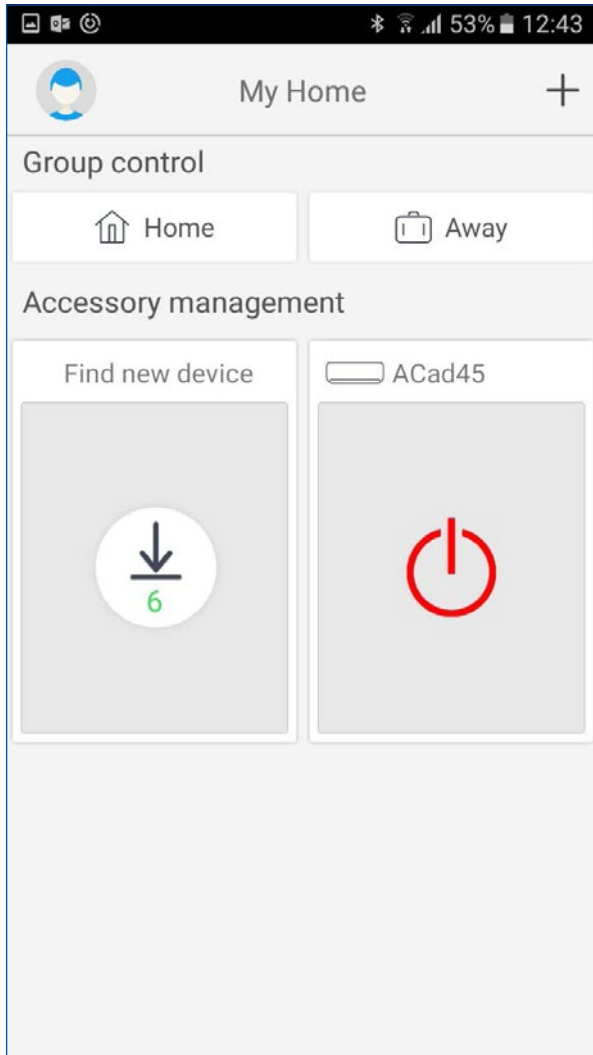
1 App will search for Appliance

2 Click OK to start App

If window pops up click on Cancel



Add Appliance Manually



You can now easily control Settings of A/C with GREE+ App while Indoors or Outdoors

N.B To access Appliance settings from Outdoors please make sure to connect to Good Signal Wifi Network or 3G/4G Network & Sign In with User Name & Password in Gree Cloud

