

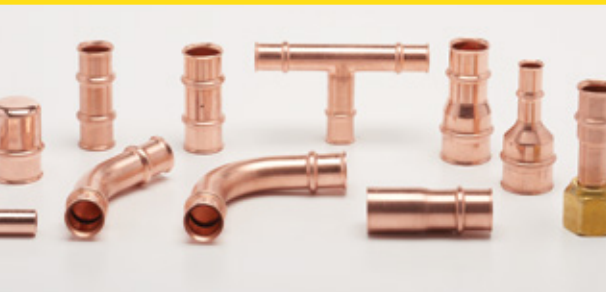


The Original Flame-Free Refrigerant Press Fittings

Product Catalogue



The familiar RLS stamp ensures a reliable connection!



MADE IN USA 

Table of Contents



Introduction	3-5
Couplings and Slip Couplings	6
90° Elbows and 90° Street Elbows	7
45° Elbows and Tees.....	8
Reducers and Reducing Bushings.....	9
SAE/Euro Flares and Caps.....	10
Ancillary Products	11-12
Tools, Jaws and Accessories	13-15
Technical Data.....	16

10-Year Limited Warranty
 All RLS press fittings are backed by a 10-year limited warranty when installed in accordance with RLS installation instructions using RLS-approved tools and jaws. See information on rapidlockingsystem.com.au for complete details.





RLS press fittings were specifically designed and engineered to join copper tube in high-pressure HVAC and refrigeration systems. Our patented RLS press fittings are fully registered and listed to UL207 for pressures up to 700 PSI.

These first-of-their-kind fittings connect quickly and easily using an RLS-approved press tool and jaws, replacing the time-consuming practice of manually brazing joints. The pressing procedure is similar to the one used with water press fittings. RLS press fittings, however, were developed to withstand the high pressures found in HVAC/R systems.

SAFE, FAST AND RELIABLE: THE IDEAL INSTALLATION AND REPAIR SOLUTION

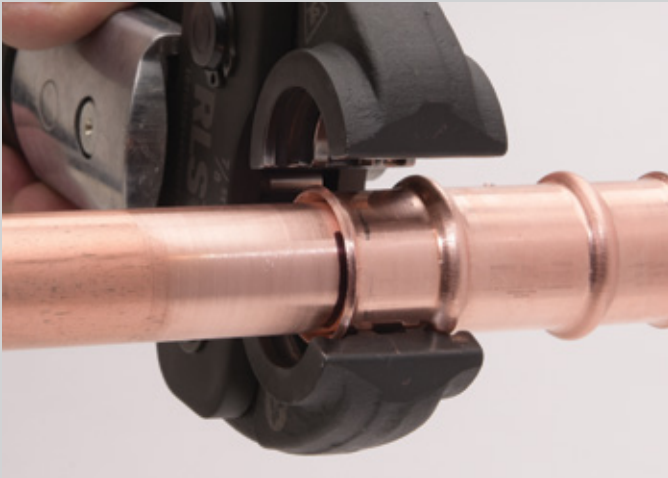
SAFE: Elimination of the brazing process by using a flame-free press tool results in a safer work environment without the added risk of fire hazards.

FAST: Connections completed in 10 seconds.

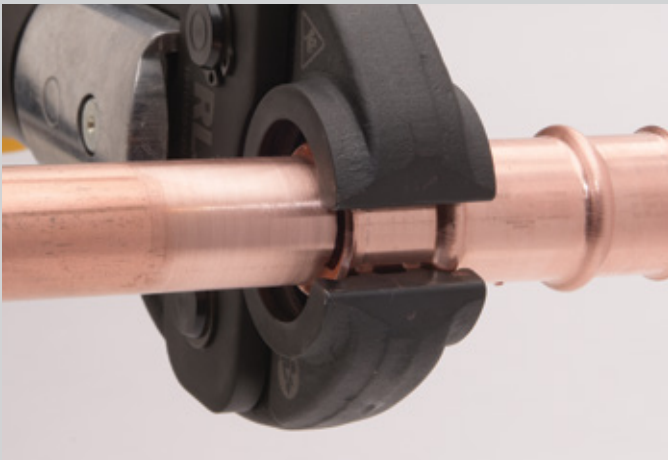
RELIABLE: More consistent and dependable connections requiring less rework than the traditional brazing method. Plus, RLS press fittings are backed by a 10-year limited warranty.

Overall, projects will result in higher-quality work that can be completed successfully by fewer people in significantly less time, resulting in increased profit per job and the ability to get more jobs done.

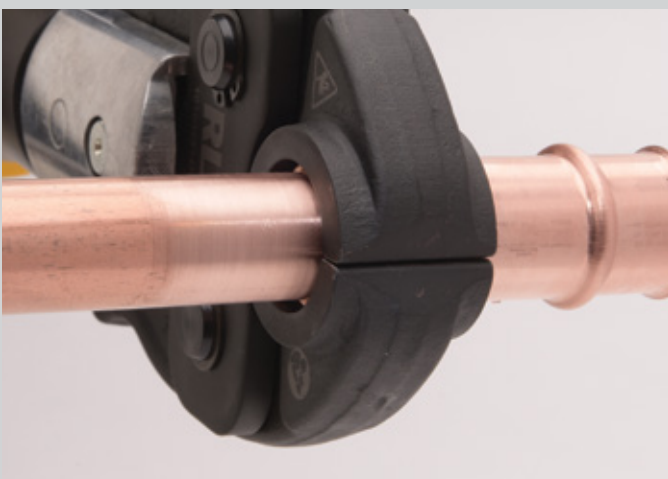
Introduction



1. Insert the tube in the fitting



2. Align the jaws



3. Activate the battery-powered tool

As easy as 1-2-3!

RLS press fittings offer a simple, effective and economical method to create leak-free copper tube connections. The RLS pressing process is very straightforward, and can be completed with minimal training. Copper tube ends are first prepped the same way as with brazing. Then, in just 10 seconds, the press tool creates a permanent and reliable mechanical joint without the dangers of heat or flammable gas.

THE RLS ADVANTAGE

- *Connects in 10 seconds*
- *UL listed to 700 psi*
- *Permanent metal-to-metal joints*
- *Huge time savings*
- *Less equipment required*
- *Safer conditions, no fire hazards*
- *No need to nitrogen purge*
- *More flexible access to job sites*
- *10-year limited warranty**

*See rapidlockingsystem.com.au for complete details.

Introduction



All RLS products are approved for use with the following refrigerants:

R-32	R-125	R-134a	R-143a	R-152a	R-227ea	R-290	R-404A	R-407A
R-407B	R-407C	R-407F	R-407G	R-407H	R-410A	R-417A	R-421A	R-422A
R-422B	R-422C	R-422D	R-424A	R-427A	R-434A	R-437A	R-438A	R-442A
R-444A	R-444B	R-445A	R-446A	R-447A	R-448A	R-449A	R-449B	R-449C
R-450A	R-451A	R-451B	R-452A	R-452B	R-452C	R-453A	R-454A	R-454B
R-454C	R-455A	R-456A	R-457A	R-458A	R-507A	R-513A	R-513B	R-515A
R-515B	R-600	R-600a	R-718	R-1234yf	R-1234ze	Ethylene Glycol		

Contact us about special blends or other refrigerants not listed here.

Check your local codes to ensure that RLS press fittings are suitable for use with your particular refrigerant.

FLAME-FREE FITTINGS FOR A SAFER, EASIER FUTURE.

With the industry transitioning to flammable refrigerants, contractors using RLS press fittings will benefit from offering flame-free services.

Advantages include:

- A safer work environment
- Reduced risks
- No need to nitrogen purge
- No dragging heavy equipment to the job site

Add up all of the benefits – safer conditions, no fire hazards, and increased efficiencies – and RLS press fittings can offer huge cost and time savings, with far fewer headaches.

COMING SOON!

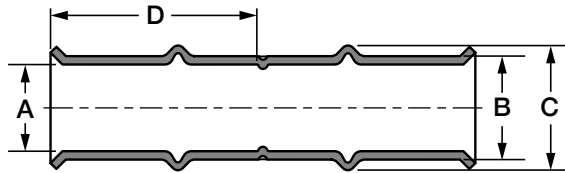


1-5/8" and 2-1/8" couplings, elbows, tees and reducers.

COUPLINGS

Couplings

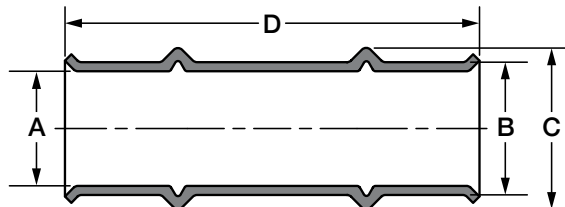
DIMENSIONS



Size (Inch)	Part Number	Dimensions (mm)				Box Quantity	Carton Quantity	Carton Weight
		A	B	C	D			
1/4	3011040400111	6.6	8.6	11.4	24.1	10	100	1.0 kg
5/16	3011050500111	8.2	10.2	13.2	23.6	10	100	1.3 kg
3/8	3011060600111	9.8	11.8	15.0	24.9	10	100	1.6 kg
1/2	3011080800111	13.0	15.0	18.5	31.8	10	100	2.8 kg
5/8	3011101000111	16.1	18.7	22.6	31.5	10	100	4.3 kg
3/4	3011121200111	19.3	22.4	27.2	32.8	10	40	2.5 kg
7/8	3011141400111	22.5	25.8	30.2	33.3	10	40	3.2 kg
1	3011161600111	25.7	29.5	34.5	33.3	10	40	4.3 kg
1-1/8	3011181800111	28.8	32.6	36.8	32.8	10	40	4.8 kg
1-1/4	3011202000111	32.1	35.9	41.1	33.0	12	24	3.4 kg
1-3/8	3011222200111	35.2	39.0	44.5	39.9	12	24	4.1 kg

Slip Couplings

DIMENSIONS



Size (Inch)	Part Number	Dimensions (mm)				Box Quantity	Carton Quantity	Carton Weight
		A	B	C	D			
1/4	3021040400111	6.6	8.6	11.4	50.8	10	100	1.0 kg
5/16	3021050500111	8.2	10.2	13.2	51.1	10	100	1.3 kg
3/8	3021060600111	9.8	11.8	15.0	52.1	10	100	1.6 kg
1/2	3021080800111	13.0	15.0	18.5	69.6	10	100	2.8 kg
5/8	3021101000111	16.1	18.7	22.6	69.9	10	100	4.3 kg
3/4	3021121200111	19.3	22.4	27.2	69.9	10	40	2.5 kg
7/8	3021141400111	22.5	25.8	30.2	69.6	10	40	3.2 kg
1-1/8	3021181800111	28.8	32.6	36.8	70.4	10	40	4.8 kg
1-3/8	3021222200111	35.2	39.0	44.5	80.0	12	24	4.1 kg

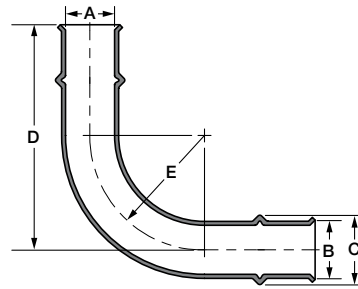
ELBOWS



90° Elbows



DIMENSIONS

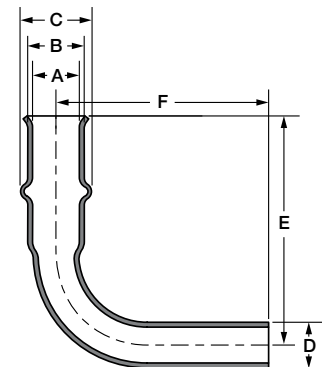


Size (Inch)	Part Number	Dimensions (mm)					Box Quantity	Carton Quantity	Carton Weight
		A	B	C	D	E			
1/4	3031040400111	6.6	8.6	11.5	51.1	17.3	10	100	2.0 kg
5/16	3031050500111	8.2	10.2	13.1	54.1	20.6	10	100	2.6 kg
3/8	3031060600111	9.8	11.8	14.9	57.7	23.6	10	100	3.4 kg
1/2	3031080800111	13.0	15.0	18.6	73.2	30.0	10	100	5.3 kg
5/8	3031101000111	16.1	18.7	22.5	81.5	37.3	10	100	9.1 kg
3/4	3031121200111	19.3	22.4	27.2	88.1	44.7	10	40	5.6 kg
7/8	3031141400111	22.5	25.8	30.2	95.3	51.6	10	40	7.5 kg
1	3031161600111	25.7	29.5	34.6	102.6	59.2	10	40	10.1 kg
1-1/8	3031181800111	28.8	32.6	36.7	109.0	64.5	10	40	12.6 kg
1-1/4	3031202000111	32.1	35.9	41.0	109.2	64.3	5	5	1.7 kg
1-3/8	3031222200111	35.2	39.0	44.4	115.3	69.9	5	5	2.2 kg

90° Street Elbows



DIMENSIONS



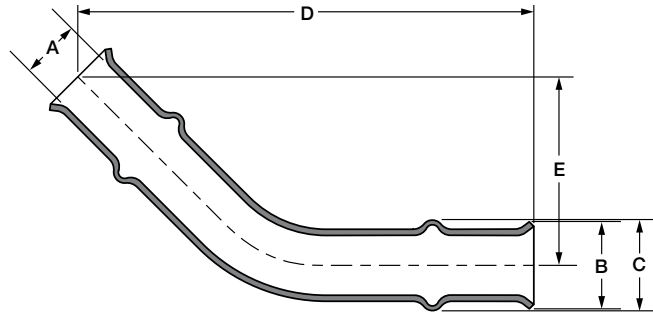
Size (Inch)	Part Number	Dimensions (mm)						Box Quantity	Carton Quantity	Carton Weight
		A	B	C	D	E	F			
3/8	3501060600111	9.8	11.8	14.9	9.5	44.5	48.0	10	100	2.2 kg
1/2	3501080800111	13.0	15.0	18.6	12.7	65.0	67.3	10	100	4.2 kg
5/8	3501101000111	16.1	18.7	22.5	15.9	67.1	71.4	10	100	6.9 kg
3/4	3501121200111	19.3	22.4	27.2	19.1	76.2	80.0	10	40	4.2 kg
7/8	3501141400111	22.5	25.8	30.2	22.2	82.6	86.4	10	40	5.8 kg
1-1/8	3501181800111	28.8	32.6	36.7	28.6	96.5	99.8	10	40	10.0 kg
1-3/8	3501222200111	35.2	39.0	44.4	35.2	111.3	114.6	5	5	1.7 kg

ELBOWS/TEES

45° Elbows



DIMENSIONS

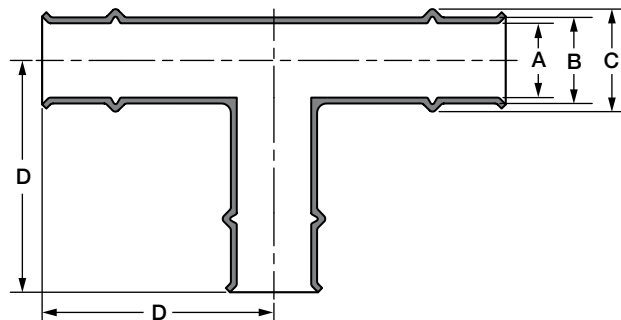


Size (Inch)	Part Number	Dimensions (mm)					Box Quantity	Carton Quantity	Carton Weight
		A	B	C	D	E			
3/8	3081060600111	9.8	14.2	14.9	74.7	30.7	10	100	2.6 kg
1/2	3081080800111	13.0	18.0	18.6	94.5	39.1	10	100	4.4 kg
5/8	3081101000111	16.1	21.8	22.5	100.8	41.7	10	100	7.2 kg
3/4	3081121200111	19.3	25.9	27.0	104.6	43.2	10	40	4.3 kg
7/8	3081141400111	22.5	28.7	30.2	114.0	47.2	10	40	5.8 kg
1-1/8	3081181800111	28.8	35.8	36.7	122.9	50.8	10	40	9.2 kg
1-3/8	3081222200111	35.2	42.7	44.4	129.8	53.6	5	5	1.7 kg

Tees



DIMENSIONS

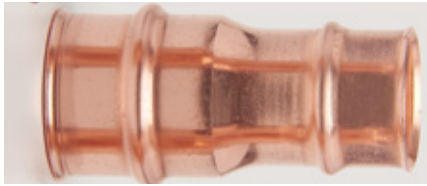


Size (Inch)	Part Number	Dimensions (mm)				Box Quantity	Carton Quantity	Carton Weight
		A	B	C	D			
3/8	3091060606111	9.8	11.8	14.9	41.4	10	100	3.8 kg
1/2	3091080808111	13.0	15.0	18.2	56.6	10	100	6.8 kg
5/8	3091101010111	16.1	18.7	22.0	58.4	10	100	12.2 kg
3/4	3091121212111	19.3	22.4	26.6	60.5	10	40	6.8 kg
7/8	3091141414111	22.5	25.8	30.2	61.7	10	40	8.2 kg
1	3091161616111	25.7	29.5	34.6	65.8	10	40	10.8 kg
1-1/8	3091181818111	28.8	32.6	36.7	65.0	10	40	13.8 kg
1-1/4	3091202020111	32.1	35.9	41.0	85.3	5	5	2.1 kg
1-3/8	3091222222111	35.2	39.0	44.4	85.3	5	5	2.4 kg

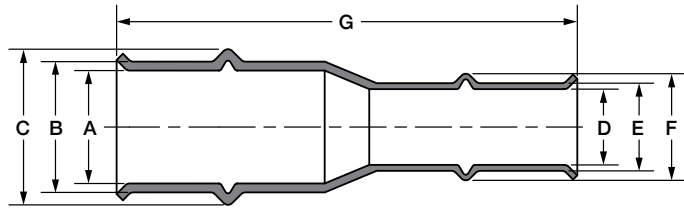
REDUCERS/REDUCING BUSHINGS



Reducers



DIMENSIONS

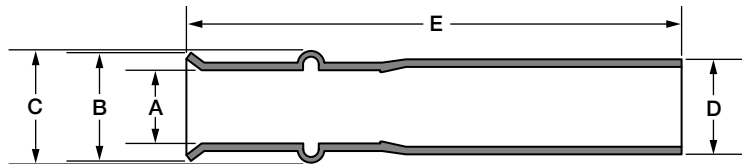


Size (Inch)	Part Number	Dimensions (mm)							Box Quantity	Carton Quantity	Carton Weight
		A	B	C	D	E	F	G			
3/8 to 1/4	3051060400111	9.8	11.8	14.9	6.6	8.6	11.5	56.9	10	100	1.7 kg
1/2 to 1/4	3051080400111	13.0	15.0	18.6	6.6	8.6	11.5	68.8	10	100	2.3 kg
1/2 to 3/8	3051080600111	13.0	15.0	18.6	9.8	11.8	14.8	65.5	10	100	2.5 kg
5/8 to 1/4	3051100400111	16.1	18.7	22.5	6.6	8.6	11.5	68.6	10	100	3.6 kg
5/8 to 3/8	3051100600111	16.1	18.7	22.5	9.8	11.8	14.8	68.6	10	100	3.7 kg
5/8 to 1/2	3051100800111	16.1	18.7	22.1	13.0	15.0	18.2	78.7	10	100	4.0 kg
3/4 to 1/2	3051121000111	19.3	22.4	26.7	13.0	15.0	18.2	78.7	10	40	2.1 kg
3/4 to 5/8	3051121000111	19.3	22.4	26.7	16.1	18.7	22.1	76.2	10	40	2.4 kg
7/8 to 1/2	3051140800111	22.5	25.8	30.2	13.0	15.0	18.2	77.5	10	40	2.5 kg
7/8 to 5/8	3051141000111	22.5	25.8	30.2	16.1	18.7	22.1	77.5	10	40	3.0 kg
7/8 to 3/4	3051141200111	22.5	25.8	30.2	19.3	22.4	26.7	79.0	10	40	3.3 kg
1 to 7/8	3051161400111	25.7	29.5	34.7	22.5	25.8	30.2	78.5	10	40	4.1 kg
1-1/8 to 1/2	3051180800111	28.8	32.6	36.7	13.0	15.0	18.2	82.6	10	40	3.7 kg
1-1/8 to 5/8	3051181000111	28.8	32.6	36.7	16.1	18.7	22.1	82.6	10	40	4.1 kg
1-1/8 to 3/4	3051181200111	28.8	32.6	36.7	19.3	22.4	26.7	80.8	10	40	4.4 kg
1-1/8 to 7/8	3051181400111	28.8	32.6	36.7	22.5	25.8	30.2	78.7	10	40	4.5 kg
1-3/8 to 7/8	3051221400111	35.2	39.0	44.4	22.5	25.8	30.2	93.0	12	24	1.3 kg
1-3/8 to 1-1/8	3051221800111	35.2	39.0	44.4	28.8	32.6	36.7	84.8	12	24	1.5 kg

Reducing Bushings



DIMENSIONS



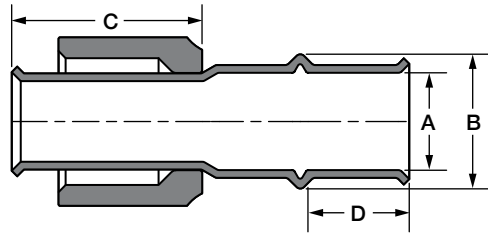
Size (Inch)	Part Number	Dimensions (mm)					Box Quantity	Carton Quantity	Carton Weight
		A	B	C	D	E			
1/2 to 3/8	3521080600111	9.8	14.2	14.9	12.7	63.5	10	100	2.1 kg
5/8 to 1/2	3521100800111	13.0	17.3	18.2	15.9	74.9	10	100	3.3 kg
3/4 to 5/8	3521121000111	16.1	21.3	22.0	19.1	75.7	10	40	2.0 kg
7/8 to 3/4	3521141200111	19.3	25.9	26.6	22.2	77.2	10	40	2.7 kg
1-1/8 to 7/8	3521181400111	22.5	27.9	30.2	28.6	77.7	10	40	3.9 kg
1-3/8 to 1-1/8	3521221800111	28.8	35.6	36.7	34.9	79.2	12	24	3.2 kg

FLARES/CAPS

SAE/Euro Flares



DIMENSIONS

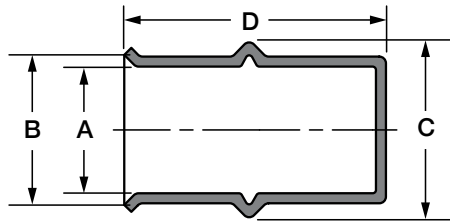


Size (Inch)	Part Number	Dimensions (mm)				Box Quantity	Carton Quantity	Carton Weight
		A	B	C	D			
1/4	3291040000111	6.6	11.5	35.1	14.2	10	100	2.7 kg
3/8	3291060000111	9.8	14.9	35.1	14.7	10	100	4.3 kg
1/2	3291080000111	13.0	18.2	34.8	19.1	10	100	6.5 kg
5/8	3291100000111	16.1	22.0	37.6	19.1	10	40	3.8 kg
3/4	3291120000111	19.3	26.6	37.6	20.3	10	40	6.7 kg

Caps



DIMENSIONS



Size (Inch)	Part Number	Dimensions (mm)				Box Quantity	Carton Quantity	Carton Weight
		A	B	C	D			
1/4	3071040000111	6.6	8.6	11.5	36.8	10	100	0.8 kg
5/16	3071050000111	8.2	10.2	13.1	36.8	10	100	1.0 kg
3/8	3071060000111	9.8	11.8	14.9	36.8	10	100	1.2 kg
1/2	3071080000111	13.0	15.0	18.2	50.0	10	100	2.3 kg
5/8	3071100000111	16.1	18.7	22.0	50.3	10	100	3.1 kg
3/4	3071120000111	19.3	22.4	26.6	50.0	10	40	1.7 kg
7/8	3071140000111	22.5	25.8	30.2	48.3	10	40	2.2 kg
1	3071160000111	25.7	29.5	34.6	50.8	10	40	3.3 kg
1-1/8	3071180000111	28.8	32.6	36.7	50.5	10	40	3.5 kg
1-1/4	3071200000111	32.1	35.9	41.0	63.5	12	24	3.0 kg
1-3/8	3071220000111	35.2	39.0	44.4	63.2	12	24	3.3 kg

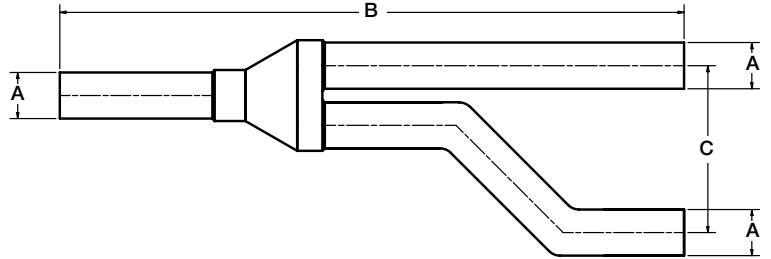
ANCILLARY PRODUCTS



ODM products are compatible with RLS fittings.

ODM Y-Joints

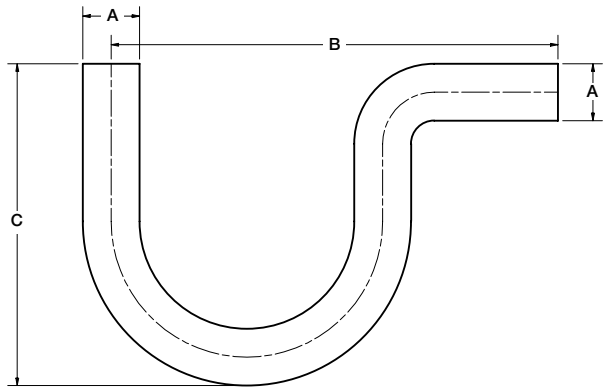
DIMENSIONS



Size (Inch)	Part Number	Dimensions (mm)			Box Quantity	Carton Quantity
		A	B	C		
3/8	3771060606111	9.7	192.0	60.0	2	44
1/2	3771080808111	12.7	227.1	63.0	2	44
5/8	3771101010111	16.0	240.0	66.0	2	42
3/4	3771121212111	19.1	258.1	69.1	2	24
7/8	3771141414111	22.4	307.1	72.9	2	24
1-1/8	3771181818111	28.7	333.0	89.9	1	10
1-3/8	3771222222111	35.1	379.0	103.1	1	10

ODM P-Traps

DIMENSIONS



Size (Inch)	Part Number	Dimensions (mm)			Box Quantity	Carton Quantity
		A	B	C		
1/2	3761080800111	12.7	130.0	89.9	2	80
5/8	3761101000111	16.0	130.0	91.9	2	80
3/4	3761121200111	19.1	150.1	108.0	2	38
7/8	3761141400111	22.4	169.9	118.1	2	38
1-1/8	3761181800111	28.7	210.1	151.9	2	10
1-3/8	3761222200111	35.1	260.1	190.0	2	10

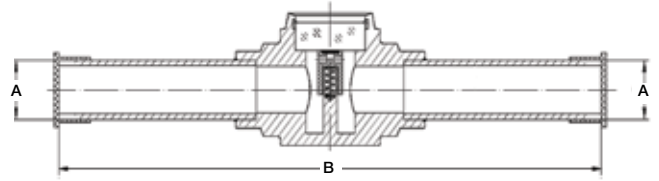
ANCILLARY PRODUCTS

ODM products are compatible with RLS fittings.

ODM Sight Glasses



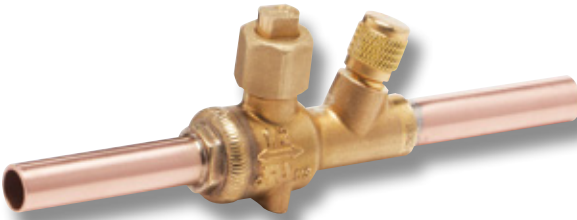
DIMENSIONS



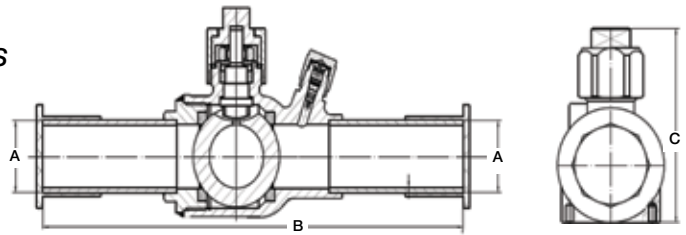
Size (Inch)	Part Number	Dimensions (mm)		Box Quantity	Carton Quantity
		A	B		
1/4	3781040400111	6.4	102.1	1	100
3/8	3781060600111	9.4	119.1	1	100
1/2	3781080800111	12.7	154.9	1	100
5/8	3781101000111	16.0	156.0	1	50
3/4	3781121200111	19.1	161.0	1	50
7/8	3781141400111	22.4	166.9	1	50
1-1/8	3781181800111	28.7	192.0	1	30

ODM Ball Valves

(Bi-Directional with Schrader valves)



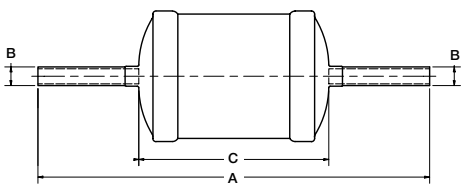
DIMENSIONS



Size (Inch)	Part Number	Dimensions (mm)			Box Quantity	Carton Quantity
		A	B	C		
1/4	3791040400111	6.4	171.5	51.3	1	40
3/8	3791060600111	9.4	161.0	51.3	1	40
1/2	3791080800111	12.7	166.6	51.3	1	40
5/8	3791101000111	16.0	172.0	58.4	1	40
3/4	3791121200111	19.1	178.0	66.0	1	30
7/8	3791141400111	22.4	184.0	66.0	1	30
1-1/8	3791181800111	28.7	207.3	83.1	1	30
1-3/8	3791222200111	34.8	228.6	98.6	1	24

ODM Filter Driers

DIMENSIONS



Size (Inch)	Part Number	Desiccant (Cubic Inches)	Dimensions (mm)			Box Quantity	Carton Quantity
			A	B	C		
3/8 Liquid Line	3821060600111	8	201.9	9.7	99.1	1	30
3/8 Liquid Line	3831060600111	16	225.0	9.7	121.9	1	30
1/2 Liquid Line	3831080800111	16	227.1	12.7	121.9	1	30
3/8 Liquid Line Bi-Directional	3921060600111	8	199.9	9.7	97.0	1	30
3/8 Liquid Line Bi-Directional	3931060600111	16	220.0	9.7	117.1	1	30

Part Number	Connections Inlet/Outlet	Flow Capacity Ton @ 1psi ΔP (For kw Multiply Ton By 3.5)				Water Capacity Drops of Water									
		R134a	R22 & R410A	R407C	R404A & R507	R134a		R22		R407c		R410A		R404A & R507	
						75°F	125°F	75°F	125°F	75°F	125°F	75°F	125°F	75°F	125°F
3821060600111	3/8" ODM	5.42	6.0	6.0	4.0	265	245	250	225	205	165	170	130	275	260
3831060600111	3/8" ODM	6.2	6.8	6.8	4.57	396	366	271	336	306	246	256	196	406	286
3831080800111	1/2" ODM	8.5	9.4	9.4	6.2	396	366	271	336	306	246	256	196	406	286
3921060600111	3/8" ODM	4.8	5.1	5.0	3.33	265	245	250	225	205	165	170	130	275	260
3931060600111	3/8" ODM	4.9	5.2	5.2	3.49	359	341	360	307	361	333	327	302	392	365

All ratings are in accordance with ANSI/AHRI standard 710-2009.



Klauke® 19 kN Press Tool and Jaws

Benefits:

- Lightweight design increases productivity
- Short pressing cycle, 10 seconds or less
- Compact design and 350° jaw rotation allows technician to install in tight spaces
- Automatic piston return
- Safety feature that lets the press cycle be interrupted, allowing for manual release of the piston, if needed
- Tool service indicated via imbedded LEDs, illuminates at 10,000 cycles

Features:

Pressing Force: 19 kN

Minimum Press Pressure: 525 bar/7,613 psi

Operating Temp. Range: -10°C to 40°C (14°F to 104°F)

Jaw Holder: Swivels through 350°

Approximate Weight with Battery:

Without Jaw: 1.8 kg (4.0 lb)

Including Jaw: 3.1 kg (6.8 lb)

Dimensions: 395 x 80 x 118 mm

Diagnostics:

PGA 1 Compatible - Yes





i-press Software Compatible - Yes



The compact, yet high-powered, Klauke 19 kN press tool presses fittings in less than 10 seconds.



Klauke 19 kN Jaws (KJ Series)

Tool & Jaw Compatibility			JAW MANUFACTURER	
TOOL MANUFACTURER	Model(s)	Size Range	Klauke® (KJ Series)	RIDGID® (RJ Series)
	MAP2L19 (19 kN)	1/4" – 1-3/8"	✓	
	RP 210 RP 240 RP 241	1/4" – 1-3/8"		✓
	M12 Force Logic (2473-20)	1/4" – 1-3/8"		✓
	ROMAX Compact (19 kN)	1/4" – 1-3/8"	✓	

Size	Part Number
1/4"	399021191040
5/16"	399021191050
3/8"	399021191060
1/2"	399021191080
5/8"	399021191100
3/4"	399021191120
7/8"	399021191140
1"	399021191160
1-1/8"	399021191180
1-1/4"	399021191200
1-3/8"	399021191220

Klauke® Tool and Jaw Kits



Tool Kit (No Jaws)

Includes the Klauke 19kN press tool and the accessory kit (contents listed below) in a hard plastic carrying case.

Part Number: 399011190001

Batteries and battery chargers may be locally supplied by RLS Stockist. Please check when purchasing.

Tool Kit with 3-Jaw Set

Includes the Klauke 19kN press tool, 3 jaws (3/8", 1/2", 7/8"), and the accessory kit (contents listed below) in a hard plastic carrying case.

Part Number: 399011190301

Batteries and battery chargers may be locally supplied by RLS Stockist. Please check when purchasing.



Tool Kit with 5-Jaw Set

Includes the Klauke 19kN press tool, 5 jaws (3/8", 1/2", 5/8", 7/8", 1-1/8"), and the accessory kit (contents listed below) in a hard plastic carrying case.

Part Number: 399011190501

Batteries and battery chargers may be locally supplied by RLS Stockist. Please check when purchasing.

8-Jaw Set

Includes 8 jaws (1/4", 3/8", 1/2", 5/8", 3/4", 7/8", 1-1/8", 1-3/8") in a hard plastic carrying case.

Part Number: 399031190801

Individual jaws are also available in all fitting sizes, 1/4" through 1-3/8".



Accessory Kit:

- Tubing cutter
- Deburring tool
- RLS press gauge
- Brush
- RLS depth gauge
- Abrasive pad
- Permanent marker



RIDGID® Jaws

RIDGID introduced plumbers to pressing nearly 20 years ago, and they take their industry leadership position seriously. The same is true of RLS. That's why we're proud to also partner with RIDGID to offer jaws for use with various RIDGID press tools that are compatible with RLS press fittings.

Size	Part Number
1/4"	399022001040
5/16"	399022001050
3/8"	399022001060
1/2"	399022001080
5/8"	399022001100
3/4"	399022001120
7/8"	399022001140
1-1/8"	399022001180
1-3/8"	399022001220



RIDGID 8-Jaw Set

The RIDGID 8-Jaw Set comes in a hard plastic carrying case and includes a tube cutter, deburring tools, press gauge, depth gauge, stainless steel brush, abrasive pad and permanent marker. Jaw sizes include 1/4", 3/8", 1/2", 5/8", 3/4", 7/8", 1-1/8" and 1-3/8". The 5/16" jaw is sold separately.

Part Number: 399032000801

NOTE: RIDGID press tools are sold through RIDGID distributors, available in lightweight pistol-grip and inline models. RLS jaws are compatible with the following RIDGID press tools: RP 240, RP 241, RP 200, RP 210, and RP 100 models.

Accessories

Part Number	Description
399011000100	Klauke Replacement Tool Case
399031000100	Klauke Jaw Case
399032000100	RIDGID Jaw Case
399040307	1-1/4" Press Gauge
399040306	Press Gauge
399040308	Depth Gauge
399040301	Tube Cutter
399040302	Small Tube Deburring Tool (1/4" - 1-1/4")

Part Number	Description
399040309	Large Tube Deburring Tool (1/2" - 2")
399040303	Stainless Steel Brush
399040304	Abrasive Pad
399040305	Permanent Marker
399040101	Safety Kit (plastic bag, pen, instructions, crimp/depth gauges)
399040203	Makita 18V Charger - DC18RC
399040202	Makita 18V Battery - BL1815
399040201	Diagnostic tool - PGA1

TECHNICAL DATA

Applications

- High Pressure HVAC/R
- Ethylene Glycol
- Non-Potable Water

Product Parameters

- Continuous Operating Temperature: 250°F / 121°C
- O-ring Temperature Rating: -40°F to +300°F / -40°C to +149°C
- Maximum Rated Pressure (MRP): 700 psi / 48 bar
- Minimum Burst Pressure (UL 207): 2,100 psi / 145 bar
- Vacuum Pressure Capability: <200 Microns
- External Helium Leak Rate: <7.5 x 10⁻⁷ Pa·m³/s at 20°C & 10 bar
- Vibration Resistance: Conforms to UL109
- Size Availability (Inches): 1/4, 5/16, 3/8, 1/2, 5/8, 3/4, 7/8, 1, 1-1/8, 1-1/4, 1-3/8

Fitting Materials

- Fitting Body: Refrigerant Grade Copper, per ASTM-B75 or ASTM-B743
- O-ring: HNBR

Compatibility

- Approved Oils: Mineral Oil, POE, PVE, PAG
- Approved Tubing Materials: Copper-to-Copper Connections
- Approved Tubing Tolerance: ASTM B88/B280, EN 12735 & AS/NZS 1571
- Approved Copper Tubing Types for Use with Klauke 19 kN and RIDGID Compatible Jaws:
 - Hard Copper (Drawn)
 - 1/4" – 1-3/8" Type ACR, M, L, K Soft Copper (Annealed)
 - 1/4" – 1-3/8" Type ACR, L, K
- Approved Copper Tubing Types for Use with Klauke 15 kN Compatible Jaws:
 - Hard Copper (Drawn)
 - 1/4" – 1-1/8" Type ACR, M, L
 - Type K Only Up to 7/8"
 - Soft Copper (Annealed)
 - 1/4" – 1-1/8" Type ACR, L
 - Type K Only Up to 7/8"

Agency Approvals and Certifications

- UL Listed: 207, SA#33958, SDTW (7) (Except where noted)
- UL Listed: Approved Use For Field & Factory Installations
- ISO 5149-2: Part 2 Compliant
- ASHRAE-15, ANSI 15, ASME B31.5 (504.7)
- ICC-ES, PMG-1296
- International Mechanical Code (IMC) 2021, 2018, 2015, 2012, 2009, 2006
- International Residential Code (IRC) 2021, 2018, 2015, 2012, 2009, 2006
- Uniform Mechanical Code (UMC) 2021, 2018, 2015, 2012, 2009, 2006
- CRN Approved (#0A22551)

RLS Press Fitting Patents

- U.S. Patent No. 9,145,992
- U.S. Patent No. 9,638,361
- U.S. Patent No. D730,494
- Australian Patent No. 2012362443
- Canadian Patent No. 2,800,360
- Canadian Design Registration No. 149228
- EUIPO Registered Community Design No. 002218636-0001
- Japanese Patent No. 6051468
- Other Pending Patent Applications

RLS Press Tools and Jaws Patents

- Australian Design Registration No. 361533
- Canadian Design Registration No. 161804
- EUIPO Registered Community Design No. 002672667-0001
- Japanese Design Registration No. 1537545
- Other Pending Patent Applications

MADE IN USA 



www.rapidlockingsystem.com.au

Contact Ian Robertson, Director of Sales, Australia and New Zealand,
at irobertson@rapidlockingsystem.com or +61 419 460 785.