



NO.	Description	Part Code		Qty
		GWH21QE-K6DNA1A/I	GWH18QE-K6DNA1D/I	
		Product Code	Product Code	
		CB419N13100	CB419N12700	
1	Front Panel Assy	20022491	20022491	1
2	Filter Sub-Assy	11012007	11012007	2
3	Screw Cover	24252453	24252453	3
4	Front Case Assy	20022487	20022487	1
5	Air Louver(Manual)	10512737	10512737	1
6	Helicoid Tongue	26112513	26112513	1
7	Left Axile Bush	10512037	10512037	1
8	Rear Case assy	22202570	22202570	1
9	Rubber Plug (Water Tray)	76712012	76712012	1
10	Ring of Bearing	26152025	26152025	1
11	O-Gasket of Cross Fan Bearing	76512203	76512203	1
12	Cross Flow Fan	10352057	10352057	1
13	Evaporator Support	24212178	24212178	1
14	Evaporator Assy	011001000180	011001000180	1
15	Cold Plasma Generator	1114001602	1114001602	1
16	Wall Mounting Frame	01252229	01252229	1
17	Motor Press Plate	26112515	26112515	1
18	Fan Motor	1501213601	15012136	1
19	Connecting pipe clamp	26112514	26112514	1
20	Drainage Hose	0523001405	0523001405	1
21	Stepping Motor	1521240212	1521240212	1
22	Crank	73012005	73012005	1
23	Guide Louver	10512738	10512738	1
24	Axile Bush	10542036	10542036	2
25	Electric Box	20112211	20112211	1
26	Terminal Board	42011233	42011233	1
27	Electric Box Cover2	20112210	20112210	1
28	Main Board	300002000418	300002000418	1
29	Display Board	300001000139	300001000139	1
30	Shield cover of Electric Box	01592139	01592139	1
31	Electric Box Cover	20112209	20112209	1
32	Jumper	4202021930	4202021916	1
33	Lower Shield of Electric Box	01592139	01592139	1
34	Electric Box Assy	100002001845	100002001439	1
35	Power Cord	/	/	/
36	Connecting Cable	4002052317	4002052317	0
37	Temperature Sensor	3900031302	3900031302	1
38	Remote Controller	305001000067	305001000067	1
39	Detecting plate(WIFI)	300018000039	300018000039	1

Above data is subject to change without notice.

NO.	Description	Part Code		Qty
		GWH24QE-K6DNA1D/I	GWH28QE-K6DNA1D/I	
		Product Code	Product Code	
		CB419N12900	CB419N13000	
1	Front Panel Assy	20022491	20022491	1
2	Filter Sub-Assy	11012007	11012007	2
3	Screw Cover	24252453	24252453	3
4	Front Case Assy	20022487	20022487	1
5	Air Louver(Manual)	10512737	10512737	1
6	Helicoid Tongue	26112513	26112513	1
7	Left Axile Bush	10512037	10512037	1
8	Rear Case assy	22202570	22202570	1
9	Rubber Plug (Water Tray)	76712012	76712012	1
10	Ring of Bearing	26152025	26152025	1
11	O-Gasket of Cross Fan Bearing	76512203	76512203	1
12	Cross Flow Fan	10352057	10352057	1
13	Evaporator Support	24212178	24212178	1
14	Evaporator Assy	011001000095	011001000095	1
15	Cold Plasma Generator	1114001602	1114001602	1
16	Wall Mounting Frame	01252229	01252229	1
17	Motor Press Plate	26112515	26112515	1
18	Fan Motor	1501213601	1501213601	1
19	Connecting pipe clamp	26112514	26112514	1
20	Drainage Hose	0523001405	0523001405	1
21	Stepping Motor	1521240212	1521240212	1
22	Crank	73012005	73012005	1
23	Guide Louver	10512738	10512738	1
24	Axile Bush	10542036	10542036	2
25	Electric Box	20112211	20112211	1
26	Terminal Board	42011233	42011233	1
27	Electric Box Cover2	20112210	20112210	1
28	Main Board	300002000418	300002000418	1
29	Display Board	300001000139	300001000139	1
30	Shield cover of Electric Box	01592139	01592139	1
31	Electric Box Cover	20112209	20112209	1
32	Jumper	4202021930	4202021930	1
33	Lower Shield of Electric Box	01592139	01592139	1
34	Electric Box Assy	100002001687	100002001687	1
35	Power Cord	/	/	/
36	Connecting Cable	4002052317	4002052317	0
37	Temperature Sensor	3900031302	3900031302	1
38	Remote Controller	305001000067	305001000067	1
39	Detecting plate(WIFI)	300018000039	300018000039	1

Above data is subject to change without notice.

NO.	Description	Part Code		Qty
		GWH18QE-K6DNC8D/I	GWH21QE-K6DNC8A/I	
		Product Code		
		CB456N02100	CB456N02000	
1	Front Panel Assy	20000300152T	20000300152T	1
2	Filter Sub-Assy	11012007	11012007	2
3	Screw Cover	2425245301	2425245301	3
4	Front Case Assy	00000200043	00000200043	1
5	Air Louver(Manual)	10512737	10512737	1
6	Helicoid Tongue	26112513	26112513	1
7	Left Axile Bush	10512037	10512037	1
8	Rear Case assy	22202570	22202570	1
9	Rubber Plug (Water Tray)	76712012	76712012	1
10	Ring of Bearing	26152025	26152025	1
11	O-Gasket of Cross Fan Bearing	76512203	76512203	1
12	Cross Flow Fan	10352057	10352057	1
13	Evaporator Support	24212178	24212178	1
14	Evaporator Assy	011001000180	011001000180	1
15	Cold Plasma Generator	1114001602	/	1
16	Wall Mounting Frame	01252229	01252229	1
17	Motor Press Plate	26112515	26112515	1
18	Fan Motor	15012136	1501213601	1
19	Connecting pipe clamp	26112514	26112514	1
20	Drainage Hose	0523001405	0523001405	1
21	Stepping Motor	1521240212	1521240212	1
22	Crank	73012005	73012005	1
23	Guide Louver	1051232001	1051232001	1
24	Axile Bush	10542036	10542036	2
25	Electric Box	20112211	20112211	1
26	Terminal Board	42011233	42011233	1
27	Electric Box Cover2	20112210	20112210	1
28	Main Board	300002000421	300002000421	1
29	Display Board	300001000144	300001000144	1
30	Shield cover of Electric Box	01592139	01592139	1
31	Electric Box Cover	20112209	20112209	1
32	Jumper	4202021928	4202021929	1
33	Lower Shield of Electric Box	01592139	01592139	1
34	Electric Box Assy	100002002523	100002002455	1
35	Power Cord	/	/	/
36	Connecting Cable	4002052317	4002052317	0
37	Temperature Sensor	3900031302	3900031302	1
38	Remote Controller	305001000067	305001000067	1
39	Detecting plate(WIFI)	000409000006	300018000039	1

Above data is subject to change without notice.

NO.	Description	Part Code		Qty
		GWH24QE-K6DNC8D/I		
		Product Code	CB456N01400	
1	Front Panel Assy	20000300152T	20000300152T	1
2	Filter Sub-Assy	11012007	11012007	2
3	Screw Cover	2425245301	2425245301	3
4	Front Case Assy	00000200057	00000200057	1
5	Air Louver(Manual)	10512737	10512737	1
6	Helicoid Tongue	26112513	26112513	1
7	Left Axile Bush	10512037	10512037	1
8	Rear Case assy	22202570	22202570	1
9	Rubber Plug (Water Tray)	76712012	76712012	1
10	Ring of Bearing	26152025	26152025	1
11	O-Gasket of Cross Fan Bearing	76512203	76512203	1
12	Cross Flow Fan	10352057	10352057	1
13	Evaporator Support	24212178	24212178	1
14	Evaporator Assy	011001000095	011001000095	1
15	Cold Plasma Generator	/	/	/
16	Wall Mounting Frame	01252229	01252229	1
17	Motor Press Plate	26112515	26112515	1
18	Fan Motor	1501213601	1501213601	1
19	Connecting pipe clamp	26112514	26112514	1
20	Drainage Hose	0523001405	0523001405	1
21	Stepping Motor	1521240212	1521240212	1
22	Crank	73012005	73012005	1
23	Guide Louver	1051232001	1051232001	1
24	Axile Bush	10542036	10542036	2
25	Electric Box	20112211	20112211	1
26	Terminal Board	42011233	42011233	1
27	Electric Box Cover2	20112210	20112210	1
28	Main Board	300002000418	300002000421	1
29	Display Board	300001000144	300001000144	1
30	Shield cover of Electric Box	01592139	01592139	1
31	Electric Box Cover	20112209	20112209	1
32	Jumper	4202021929	4202021929	1
33	Lower Shield of Electric Box	01592139	01592139	1
34	Electric Box Assy	100002002455	100002002455	1
35	Power Cord	/	/	/
36	Connecting Cable	4002052317	4002052317	0
37	Temperature Sensor	3900031302	3900031302	1
38	Remote Controller	305001000069	305001000069	1
39	Detecting plate(WIFI)	300018000039	300018000039	1

Above data is subject to change without notice.

NO.	Description	Part Code	Qty
		GWH28QE-K6DNC8D/I	
	Product Code	CB456N02200	
1	Front Panel Assy	20000300152T	1
2	Filter Sub-Assy	11012007	2
3	Screw Cover	2425245301	3
4	Front Case Assy	00000200043	1
5	Air Louver(Manual)	10512737	1
6	Helicoid Tongue	26112513	1
7	Left Axile Bush	10512037	1
8	Rear Case assy	22202570	1
9	Rubber Plug (Water Tray)	76712012	1
10	Ring of Bearing	26152025	1
11	O-Gasket of Cross Fan Bearing	76512203	1
12	Cross Flow Fan	10352057	1
13	Evaporator Support	24212178	1
14	Evaporator Assy	011001000095	1
15	Cold Plasma Generator	/	/
16	Wall Mounting Frame	01252229	1
17	Motor Press Plate	26112515	1
18	Fan Motor	1501213601	1
19	Connecting pipe clamp	26112514	1
20	Drainage Hose	0523001405	1
21	Stepping Motor	1521240212	1
22	Crank	73012005	1
23	Guide Louver	1051232001	1
24	Axile Bush	10542036	2
25	Electric Box	20112211	1
26	Terminal Board	42011233	1
27	Electric Box Cover2	20112210	1
28	Main Board	300002000421	1
29	Display Board	300001000144	1
30	Shield cover of Electric Box	01592139	1
31	Electric Box Cover	20112209	1
32	Jumper	4202021929	1
33	Lower Shield of Electric Box	01592139	1
34	Electric Box Assy	100002002455	1
35	Power Cord	/	/
36	Connecting Cable	4002052317	0
37	Temperature Sensor	3900031302	1
38	Remote Controller	305001000067	1
39	Detecting plate(WIFI)	300018000039	1

Above data is subject to change without notice.



No.	Description	Part Code		Qty
		GWH15QD-K6DNA1A/O	GWH18QE-K6DNA1D/O	
	Product Code	CB419W13200	CB419W12700	
1	Fan Motor	1501506402	1501506402	1
2	Terminal Board	420101943	420101943	1
3	Electric Box	1501506402	1501506402	1
4	Radiator	4901521502	4901521502	1
5	Main Board	300027000280	300027000280	1
6	Electric Box Cover	20125002	20125002	1
7	Electric Box Assy	100002001442	100002001442	1
8	Left Handle	/	/	/
9	Left Side Plate	01305093P	01305093P	1
10	Motor Support Sub-Assy	01705067	01705067	1
11	Condenser Support Plate	01795031	01795031	1
12	Coping	012049000007P	012049000007P	1
13	Reactor	/	/	/
14	Clapboard Assy	01235081	01235081	1
15	Condenser Assy	011002000177	011002000177	1
16	Rear Grill	01475020	01475020	1
17	Wiring Clamp	3900030902	3900030902	1
18	Temperature Sensor	3900030902	3900030902	1
19	Handle	26233053	26233053	1
20	Cut off Valve	07130239	07130239	1
21	Valve Cover	22245002	22245002	1
22	Cut off Valve	071302392	07133844	1
23	Valve Support Sub-Assy	01715010	01705046P	1
24	Right Side Plate	0130509001P	0130509001P	1
25	Electronic Expansion Valve assy	03017400003601	030174000065	1
26	4-Way Valve Assy	030152000143	030152000073	1
27	Magnet Coil	/	/	/
28	Compressor Gasket	76710247	76710247	3
29	Compressor and Fittings	00103919G	00103919G	1
30	Chassis Sub-assy	01700000161P01	01700000161P01	1
31	Drainage Connector	06123401	06123401	1
32	Drainage hole Cap	06813401	06813401	1
33	Axial Flow Fan	10335008	10335008	1
34	Insulated Board (Cover of Electric Box)	20113003	20113003	1
35	Cabinet	01433069	/	1
36	Front Grill	22413025	22413025	1

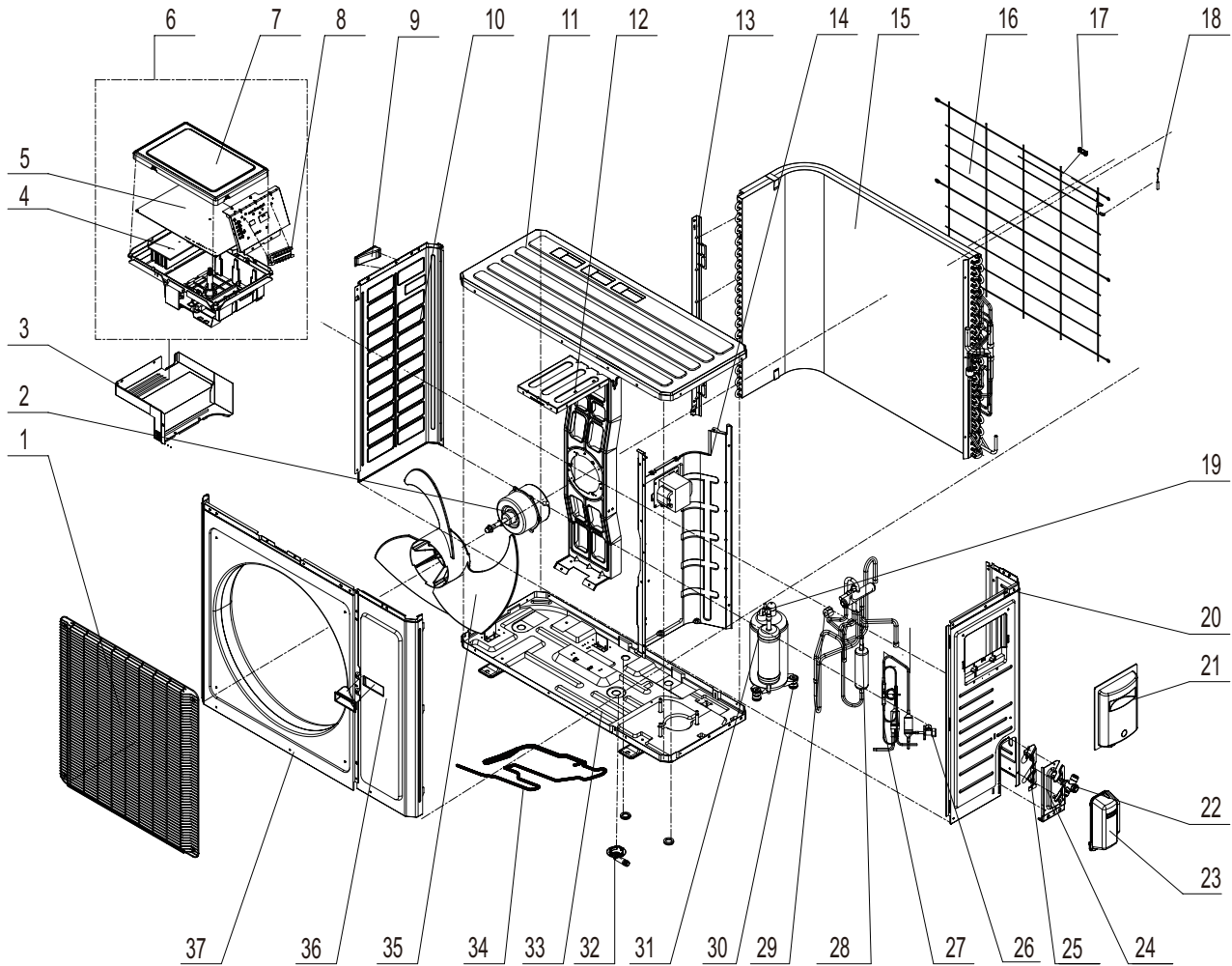
Above data is subject to change without notice.



No.	Description	Part Code		Qty
		GWH21QE-K6DNA1A/O		
		CB419W13100		
1	Fan Motor	1501506402		1
2	Terminal Board	420101943		1
3	Electric Box	1501506402		1
4	Radiator	4901521502		1
5	Main Board	300027000281		1
6	Electric Box Cover	20125002		1
7	Electric Box Assy	100002001849		1
8	Left Handle	26235401		1
9	Left Side Plate	01305093P		1
10	Motor Support Sub-Assy	01705067		1
11	Condenser Support Plate	01795031		1
12	Coping	012049000007P		1
13	Reactor	/		/
14	Clapboard Assy	01235081		1
15	Condenser Assy	011002000177		1
16	Rear Grill	01475020		1
17	Wiring Clamp	3900030902		1
18	Temperature Sensor	3900030902		1
19	Handle	2623525404		1
20	Cut off Valve	07133844		1
21	Valve Cover	22245002		1
22	Cut off Valve	07133844		1
23	Valve Support Sub-Assy	01705046P		1
24	Right Side Plate	0130509001P		1
25	Electronic Expansion Valve assy	030174000069		1
26	4-Way Valve Assy	030152000255		1
27	Magnet Coil	/		/
28	Compressor Gasket	76713066		3
29	Compressor and Fittings	00105273		1
30	Chassis Sub-assy	017000000208P		1
31	Drainage Connector	06123401		1
32	Drainage hole Cap	06813401		1
33	Axial Flow Fan	10335008		1
34	Insulated Board (Cover of Electric Box)	20113003		1
35	Cabinet	/		/
36	Front Grill	22413025		1

Above data is subject to change without notice.

GWH24QE-K6DNA1D/O GWH28QE-K6DNA1D/O



The component is only for reference; please refer to the actual product.

No.	Description	Part Code		Qty
		GWH24QE-K6DNA1D/O	GWH28QE-K6DNA1D/O	
	Product Code	CB419W12900	CB419W13000	
1	Front Grill	22415011	22415011	1
2	Fan Motor	15010400000102	15010400000102	1
3	Electric box	20115003	20115003	1
4	Radiator	4901521502	4901521502	1
5	Main Board	300027000313	300027000312	1
6	Electric Box Assy	100002001658	100002001656	1
7	Electric Box Cover	20125002	20125002	1
8	Terminal Board	420101943	420101943	1
9	left handle	26235401	26235401	1
10	Left Side Plate	01305043P	01305043P	1
11	Coping	01255006P	01255006P	1
12	Motor Support Sub-Assy	017012000015	017012000015	1
13	Condenser Support Plate	01175092	01175092	1
14	Clapboard	01233140	01233140	1
15	Condenser Assy	011002000459	011002000459	1
16	Rear Grill	01475013	01475013	1
17	Wiring clamp	26115004	26115004	1
18	Temperature Sensor	3900030901	3900030901	1
19	Compressor Overload Protector(External)	00180030	00180030	1
		00183051	00183051	1
		00183032	00183032	1
20	Right Side Plate	0130504401P	0130504401P	1
21	Big Handle	26235001	26235001	1
22	Cut off Valve	07133157	07133157	1
23	Valve Cover	22245003	22245003	1
24	Valve Support Sub-Assy	0171501201P	0171501201P	1
25	Baffle(Valve Support)	/	/	/
26	Cut off Valve	07130239	07130239	1
27	Electronic Expansion Valve	43005016	43005016	1
28	4-way Valve Assy	03073441	030152000310	1
29	Magnet Coil	4300040045	4300040045	1
30	Compressor Gasket	76713066	76713066	3
31	Compressor and fittings	00105273	00105273	1
32	Drainage Connector	06123401	06123401	1
33	Chassis Sub-assy	02803196P	02803196P	1
34	Drainage hole Cap	06813401	06813401	3
35	Axial Flow Fan	10335014	10335014	1
36	Front Side Plate	01305086P	01305086P	1
37	Cabinet	01435004P	01435004P	1

Above data is subject to change without notice.

# 11. Removal Procedure

## 11.1 Removal Procedure of Indoor Unit



**Warning:** Be sure to wait for a minimum of 20 minutes after turning off all power supplies and discharge the refrigerant completely before removal.

Step	Procedure	Procedure
1.Remove filter assy	<p>Open the front panel. Push the left and right filters to make them break away from the groove on the front case. Then remove the left and right filters one by one.</p>	
2.Remove horizontal louver	<p>Push out the axle bush on horizontal louver, Bend the horizontal louver with hand and then separate the horizontal louver from the crank shaft of step motor to remove it.</p>	
3.Remove the front panel	<p>a Screw off the 2 screws that are locking the display board. Separate the display board from the front panel.</p> <p>b Separate the panel rotation shaft from the groove fixing the front panel and then removes the front panel.</p>	