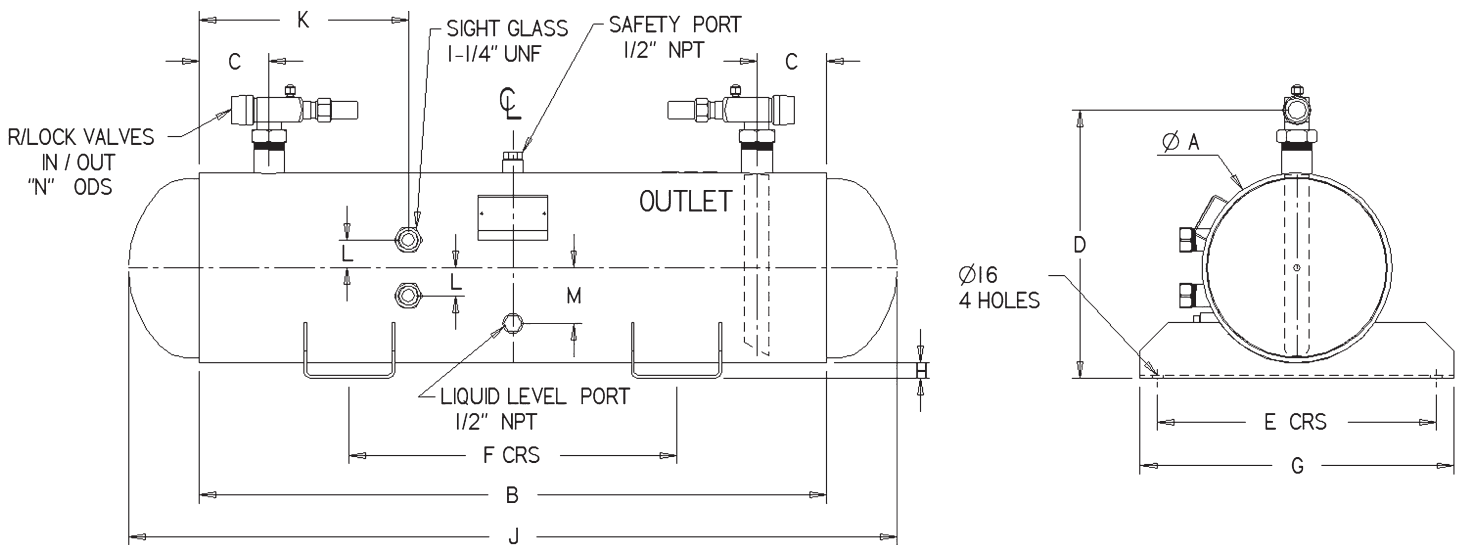




PRODUCT INFORMATION

Pressure Vessels

Horizontal Receiver



HR27-2 to HR495-1

MODEL	PUMP DOWN KG*	DIMENSIONS											R/LOCK	
		ØA	B	C	D	E	F	G	H	J	K	L		M
HR27-2	27	219	800	100	297	400	600	450	22	970	N/A	N/A	N/A	3/4"
HR40-2	40	219	1200	100	297	400	600	450	22	1370	N/A	N/A	N/A	3/4"
HR75-2	75	356	650	100	470	400	450	450	23	920	250	40	100	1 - 3/8"
HR100-1	100	356	900	100	470	400	470	450	23	1170	300	40	100	1 - 3/8"
HR130-2	130	356	1200	100	470	400	590	450	23	1470	400	40	105	1 - 3/8"
HR170-2	170	406	1200	100	540	550	590	600	41	1470	400	40	130	1 - 3/8"
HR225-2	225	457	1200	100	593	750	590	800	47	1515	400	40	150	1 - 3/8"
HR335-1	335	508	1500	100	644	750	750	800	46	1815	450	40	175	1 - 3/8"
HR495-1	495	610	1500	100	746	750	750	800	46	1965	450	40	220	1 - 3/8"

Pressure relief valve: 3020-425 for 3000 kPa design pressure 1/2" BSP x 5/8" MF (Customer to fit)

Pressure relief valve: 523240 for 2800 kPa design pressure 1/2" BSP x 5/8" MF (Customer to fit)

Liquid level alarm switch: S-9420 (Customer to fit)

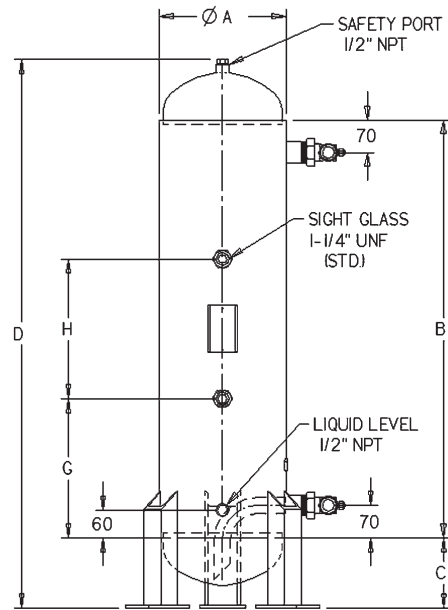
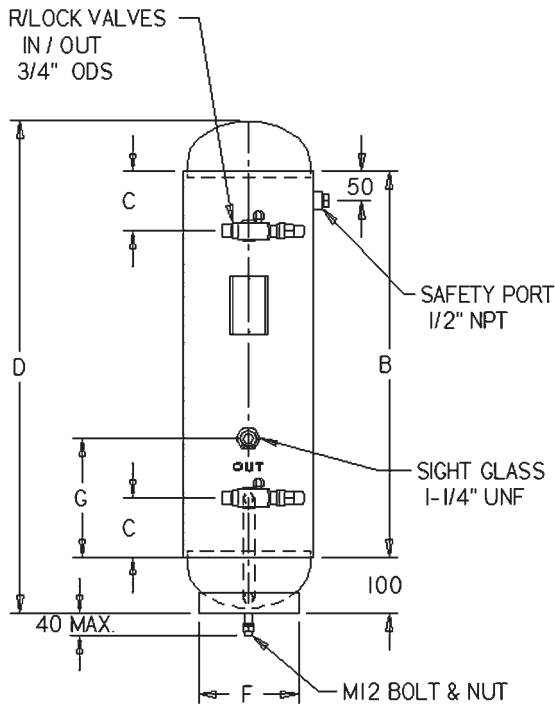
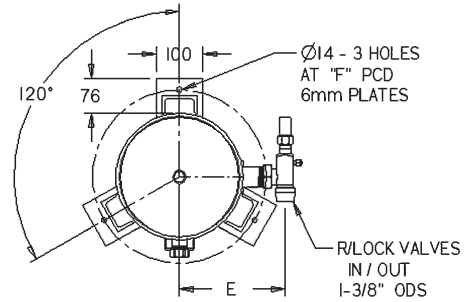
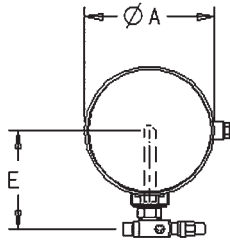
* Nominal pump down capacity based on vessel being 80% full on R22 at 32°C

* Receiver capacity for R404a = R22 capacity x 0.87

13 23 50
www.heatcraft.com.au



Vertical Receiver



VR27-2 to VR40-2

MODEL	PUMP DOWN kg	DIMENSIONS						
		ØA	B	C	D	E	F	G
VR27-2	27	219	800	100	980	165	168	200
VR40-2	40	219	1200	100	1380	165	168	200

VR75-2 to VR495-1

MODEL	PUMP DOWN kg	DIMENSIONS							
		ØA	B	C	D	E	F	G	H
VR75-2	75	356	650	150	960	268	456	200	250
VR100-1	100	356	900	150	1210	268	456	300	300
VR130-1	130	356	1200	150	1510	268	456	300	450
VR170-1	170	406	1200	150	1510	289	532	400	400
VR225-1	225	457	1200	180	1560	317	555	400	400
VR335-1	335	508	1500	196	1880	342	610	400	400
VR495-1	495	610	1500	256	2010	392	710	400	400

Pressure relief valve: 3020-425 kPa design for 3000 pressure 1/2" BSP x 5/8" MF (Customer to Fit)

Pressure relief valve: 523240 for 2800 kPa design pressure 1/2" BSP x 5/8" MF (Customer to fit)

Liquid level alarm switch: S-9420 (Customer to fit)

Nominal pump down capacity based on vessel being 80% full on R22 at 32°C

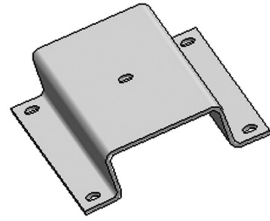
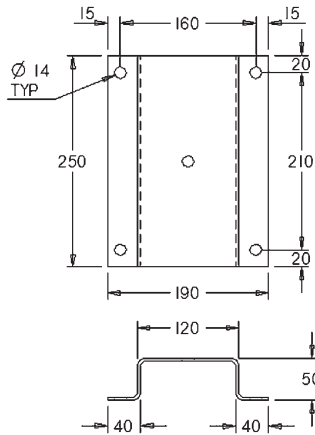
Receiver capacity for R404a R22 x 0.87

13 23 50

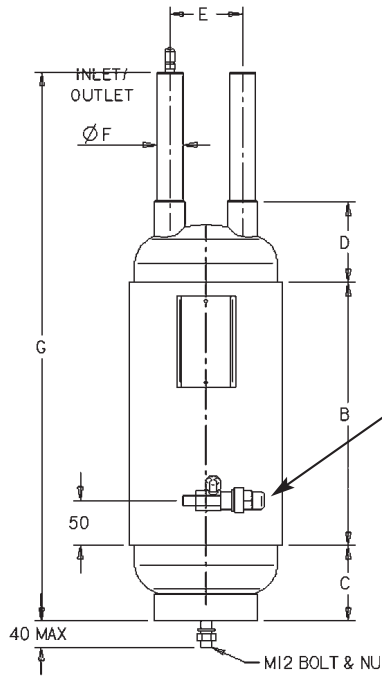
www.heatcraft.com.au



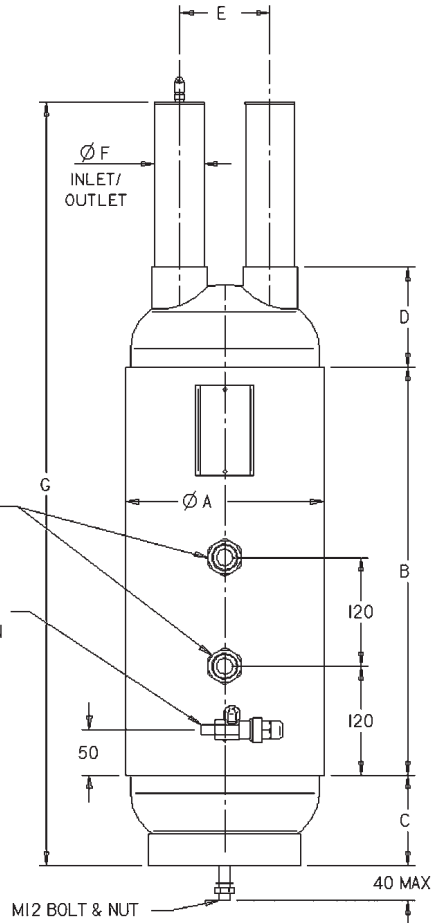
Oil Separator



OPTIONAL VESSEL MOUNT
MRD467-1



OS15-1 to OS47-1



OS79-1 to OS170-1



OS15-1 to OS47-1

MODEL	CAPACITY WATTS R404A/R507/R22	DIMENSIONS						
		ØA	B	C	D	E	F	G
OS15-1	15200	168	170	83	90	80	22.2	475
OS23-1	23600	168	220	83	90	80	28.6	535
OS34-1	34400	168	290	83	90	80	28.6	605
OS47-1	47600	219	290	96	110	80	34.9	630

OS15-1 to OS47-1

MODEL	CAPACITY WATTS R404A/R507/R22	DIMENSIONS						
		ØA	B	C	D	E	F	G
OS79-1	79000	219	350	96	110	80	41.3	690
OS110-1	110000	219	450	100	110	100	53.9	885
OS140-1	140000	219	650	100	110	100	53.9	1065
OS170-1	170000	219	850	100	110	100	53.9	1265

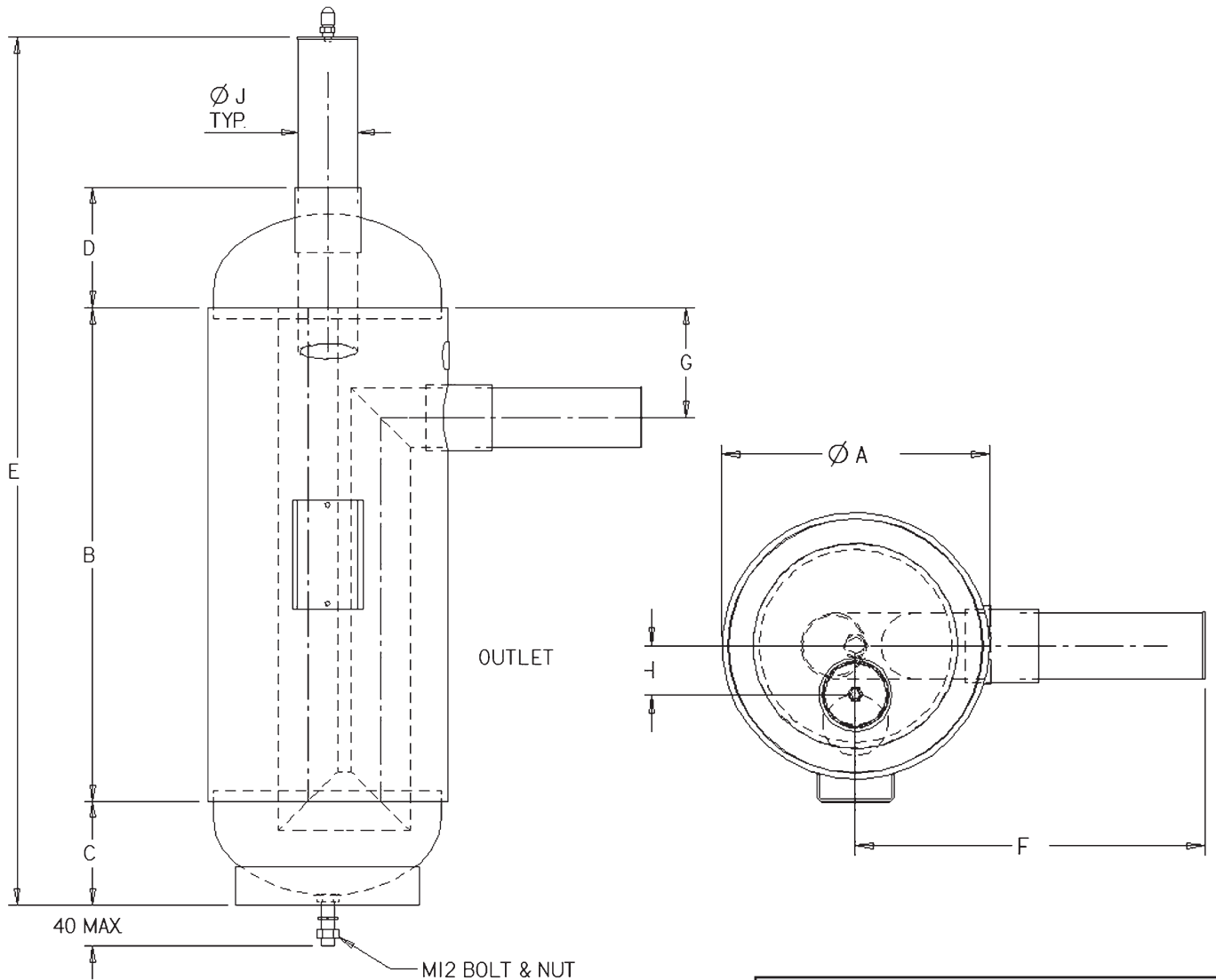
Capacities rated @ -10°C saturated suction gas temp and 40°C condensing temperature.

13 23 50

www.heatcraft.com.au



Suction Accumulator



SA10-1 to SA40-1

MODEL	LIQUID HOLDING CAPACITY kg	DIMENSIONS								
		ØA	B	C	D	E	F	G	H	J
SA10-1	6.0	168	290	83	95	603	265	60	35	28.6
SA20-1	11.25	219	350	95	110	690	285	60	45	41.3
SA30-1	14.0	219	450	95	110	760	255	100	40	54
SA40-1	18.2	219	650	95	110	960	255	100	40	54

Liquid holding capacity based on R404A @ -20°C and 70% full.
Liquid capacity factor for R22 = R404A x 1.14

CAPACITY / WATTS @ SUCTION EVAPORATING TEMP (°C)					
MODEL	-40	-30	-20	-10	0
R404A/R507					
SA10	5480	9660	15420	30240	43240
SA20	8440	14820	23730	35700	51050
SA30	15890	28250	45870	69600	99530
SA40	23800	42500	68940	104450	149680
R22					
SA10	6350	10740	16850	33040	46580
SA20	9770	16470	25930	39010	54600
SA30	18400	31390	50120	76050	108740
SA40	27630	47230	75330	114130	163540

• For good oil return do not select accumulators at less than 35% of maximum capacity

13 23 50
www.heatcraft.com.au

