

# Rotalock Valves

Rotalock Valves are widely used throughout the refrigeration and air-conditioning industry as a convenient removable connection point and service valve typically fitted to compressors and pressure vessels.

The Rotalock connection consists of male and female components that when joined compress a sacrificial Teflon washer. By compressing the Teflon washer a seal is created that can maintain its integrity with large changes in temperature and constant vibration.

Henry Technologies have taken these valves to a new level with the introduction of their Full Flow Rotalock design. This Patented design incorporates a number of unique features to benefit the user including a recessed polished steel spindle that allows for an uninterrupted flow through the valve when in the fully back seated position. Flow tests confirm that Full Flow Rotalock valves are up to 50% more efficient than the traditional type of Rotalock valves on the market today.

Available in a range of styles and connection sizes, these are the valves your system needs to deliver maximum capacity and efficiency.



## Manufacturing Standards

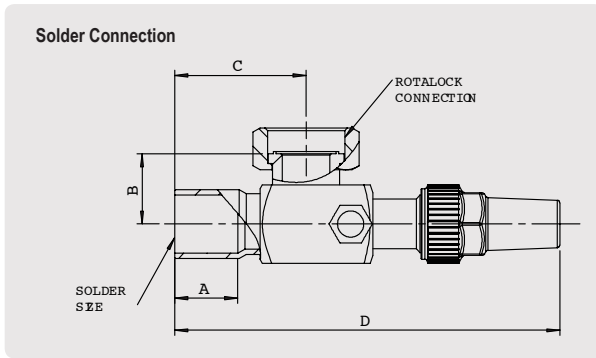
Manufactured in accordance with AS/NZS 1677.2  
Safe Working Pressure: 4,200 kPa

## Features

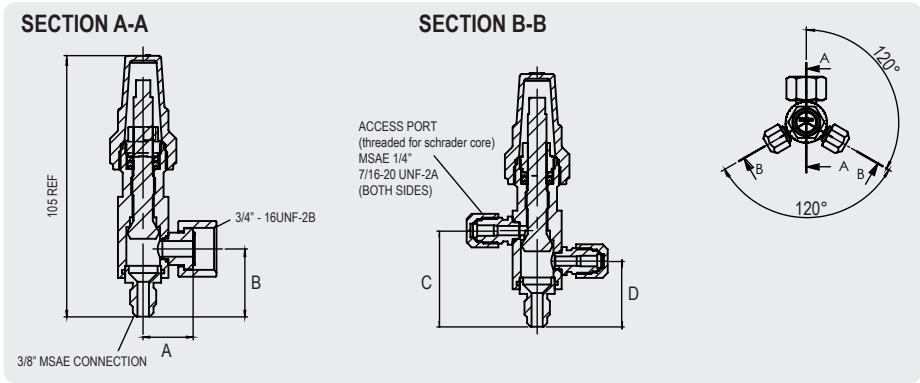
- Polished steel spindle with Teflon gland seal.
- Seat surfaces are copper.
- Optimum flow due to recessed spindle (back seat position).
- Zinc Blue Passivated coating (Salt spray tested to 300 hours).
- Dual ¼ MSAE access ports.
- Safe Working Pressure: 4,200 kPa.
- Suitable for all fluorinated refrigerants and oils.

## Benefits

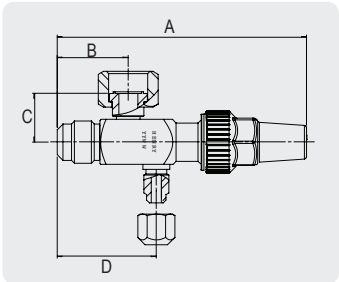
- Increased service life and less torque required when closing.
- Provides a superior seal with less sealing torque.
- Requires only low silver content solder with less heat for an improved leak proof joint.
- Delivers minimal pressure drop & improved system efficiency.
- Corrosion resistance superior to Nickel plating.
- Dual access ports accept Schrader cores to provide improved service flexibility.
- R410A compatible.
- Ideal for today's Refrigeration systems.



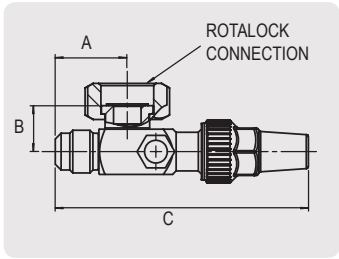
Part No.	Solder Size	Rotalock Thread	Dimensions (mm)			
			A	B	C	D
2606-041220	1/4"	3/4"-16 UNF	8	19	29	103
2606-061220	3/8"	3/4"-16 UNF	8	19	25	105
2606-061620	3/8"	1"-14UN	8	19	25	100
2606-081220	1/2"	3/4"-16 UNF	10	19	39	104
2606-081620	1/2"	1"-14 UN	10	19	30	104
2606-101620	5/8"	1"-14 UN	15	19	29	104
2606-102030	5/8"	1 1/4"-12 UNF	15	26.7	40	132
2606-122030	3/4"	1 1/4"-12 UNF	15	26.7	40	132
2606-142030	7/8"	1 1/4"-12 UNF	20	26.7	40	132
2606-182030	1 1/8"	1 1/4"-12 UNF	20	26.7	47	139
2606-142830	7/8"	1 3/4"-12 UN	20	27.7	40	133
2606-182835	1 1/8"	1 3/4"-12 UN	20	30.7	55	176
2606-222835	1 3/8"	1 3/4"-12 UN	22	30.7	56	177
2606-262835	1 5/8"	1 3/4"-12 UN	25	30.7	61	182
2606-263650	1 5/8"	2 1/4"-12 UN	25	41.5	74.5	214
2606-343650	2 1/8"	2 1/4"-12 UN	25	41.5	78.5	219



Part No.	Description	Dimensions (mm)			
		A	B	C	D
2616-061220-HEX	3/8 MSAE x 3/4 R/L Nut x 20 HEX BODY	19	31.5	41	28
2616-041220-HEX	1/4 MSAE x 3/4 R/L Nut x 20 HEX BODY	19	31	39.5	31



Part No.	Description	Dimensions (mm)			
		A	B	C	D
2616-061220-S	3/8 MSAE - 3/4 R/L NUT - Single Port	99 ±2	32.5	19	41

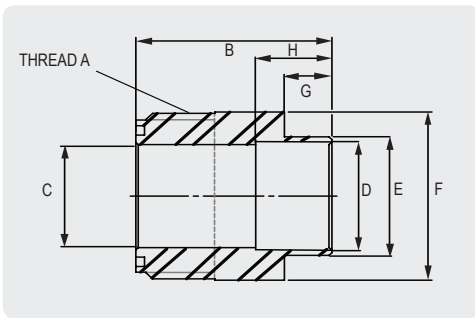


Part No.	Description	Dimensions (mm)		
		A	B	C
2616-061220	3/8 MSAE - 3/4 R/L NUT	31.5	19	105
2616-081620	1/2 MSAE - 1 R/L NUT	32	19	105
2616-101620	5/8 MSAE - 1 R/L NUT	40	19	114



**Rotalock Teflon Gasket**

Part No.	Description	Pk Q'ty
800-26XX-12	Suit 3/4" R/L Nut	10
800-26XX-16	Suit 1" R/L Nut	5
800-26XX-20	Suit 1-1/4" R/L Nut	5
800-26XX-28	Suit 1-3/4" R/L Nut	5
800-26XX-36	Suit 2-1/4" R/L Nut	5



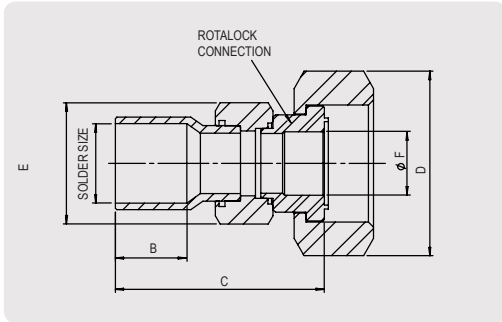
**Rotalock Welding Spuds - Available as ASME - Female ID Weld to Male Rotalock Thread**

Part No.	Description	Thread (Inch) A	Dimensions (mm)							Nominal Weight (kg)
			Overall Length B	I.D. C	I.D. D	O.D. E	Welded End O.D. F	Length G	Depth H	
965-26XX-12S	Suit 3/4 Rotalock	3/4-16 UNF	34	7.9	7.9	11.1	19.1	6	-	0.04
965-26XX-16S	Suit 1 Rotalock	1-14 UN	36	12.7	12.7	15.9	25.4	6	-	0.09
965-26XX-20S	Suit 1 1/4 Rotalock	1-1/4-12 UNF	38	19.0	19.0	22.2	31.8	8	-	0.09
965-26XX-28S	Suit 1 3/4 Rotalock	1-3/4-12 UN	38	31.75	34.9	38.1	44.5	8	15	0.18
965-26XX-36S	Suit 2 1/4 Rotalock	2-1/4-12 UN	39	41.3	41.3	47.6	57.2	8	-	0.27

**Recommended Torque settings for Rotalock Nuts**

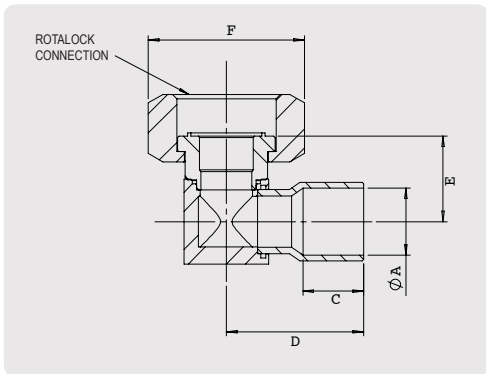
Rotalock Nut Size	Torque (Nm)
Rotalock 3/4-16 UNF	40-50
Rotalock 1-14 UNS	70-80
Rotalock 1-1/4-12 UNF	120-135
Rotalock 1-3/4-12 UNF	135-160
Rotalock 2-1/4-12 UNF	165-190

# Rotalock Connectors



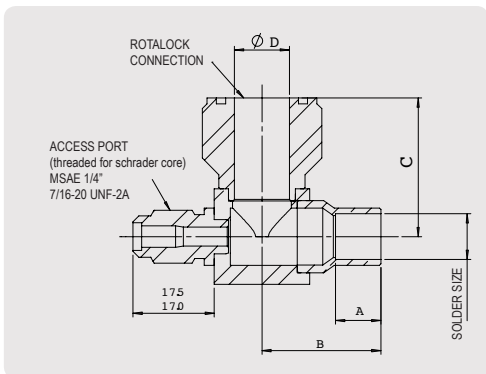
### Straight Connector

Part No.	Nominal Size	Solder Size	B ±1	C ±1.5	D A/F	E A/F	Φ F
290-0816	1/2"	12.75~12.95	13	35	30	22	12
290-1016	5/8"	15.93~16.13	14	35	30	22	12
290-1216	3/4"	19.10~19.30	16	35	30	22	12
290-1020	5/8"	15.93~16.13	14	37.7	36	27	19
290-1220	3/4"	19.10~19.30	16	37.7	36	27	19
290-1420	7/8"	22.28~22.48	24	47.7	36	27	19
290-1820	1 1/8"	28.65~28.85	25	51.7	36	36	19
290-1828	1 1/8"	28.65~28.85	20	55.2	50	36	27
290-2228	1 3/8"	35.00~35.20	25	57.2	50	46	27



### Elbow Connector

Part No.	ØA (ID)		Rotalock Connection	C ±1	D ±1	E ±1	F A/F
	Nominal Size	Solder Size					
291-0612	3/8"	9.58~9.78	3/4"	9.5	25	44	24
291-0812	1/2"	12.75~12.95	3/4"	13	25	44	24
291-0816	1/2"	12.75~12.85	1"	13	25	44	30
291-1016	5/8"	15.93~16.13	1"	14	32	44	30
291-1216	3/4"	19.10~19.30	1"	20	39	44	30
291-1416	7/8"	22.28~22.48	1"	24	44	44	30
291-1020	5/8"	15.93~16.13	1 1/4"	14	40	27	36
291-1420	7/8"	22.28~22.48	1 1/4"	24	50	27	36
291-1820	1 1/8"	28.65~28.85	1 1/4"	28	57	27	36
291-1828	1 1/8"	28.65~28.85	1 3/4"	23	50	30	50
291-2228	1 1/8"	28.65~28.85	1 3/4"	25	57	30	50



### Male Elbow Connector

Part No.	Nominal Size	Solder Size	Rotalock Size	A±0.2	B±1.5	C±1	Φ D
297-0616	3/8"	Φ 9.58~9.78	1"	8	24.5	29	12
297-0816	1/2"	Φ12.75~12.95	1"	10	29.5	29	12
297-1220	3/4"	Φ19.1~19.3 16	1 1/4"	16	38.5	34.5	19
297-1420	7/8"	Φ22.28~22.48	1 1/4"	20	38.5	34.5	19