

Si-10

UNIVERS' L
PISTON PUMP



Versatile pump

The distinctive shape of the new Si-10 UNIVERS' L pump allows its use in both new installations and refurbishments. The improved pump ensures a reduced sound level and the new design offers ease of maintenance.

BENEFITS



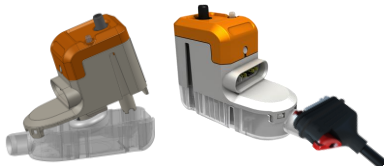
• Universal installation

- A single pump for multiple applications :
 - Covers a large range of capacity, up to 20 kW.
 - Included in our 80x50 and 80x60 Delta Pack.
 - Allows the replacement of the majority of quick fit elbow pumps on the market over the last 10 years.
- "Drain Safe Device" facilitates connection to the discharge pipe.



• Silence

- Silent operation: 22 dBA at full power - Independently tested.
- Mounting bracket designed to reduce vibration transmission.



• Easy maintenance

- Transparent, removable reservoir.
- Secure float assembly
- Lockable plug-in power cable to avoid unintended disconnection.

NEW
2015

• Proven reliability

- Sauermann inside®: exclusive technology.
- No filter. Designed to allow free passage of particles up to 2 mm.
- High flow – Up to 20 ltr/hr = Less run time
- The Drain Safe Device retains prime and prolongs the pump life.



KIT CONTENT



- Si-10 piston pump unit.
- Integral detector
- Clear PVC tube Ø int. 6mm – L: 1m, fitted with a « Drain Safe Device » pre-mounted.
- Anti vibration mounting bracket.
- * - 1.5 m lockable plug-in power cable: 2 power wires, 2 safety switch wires.
- Installation kit:
 - 90° elbow pipe Ø int. 15mm x L60mm
 - Vent tube Ø int. 4mm x L75m

APPLICATIONS

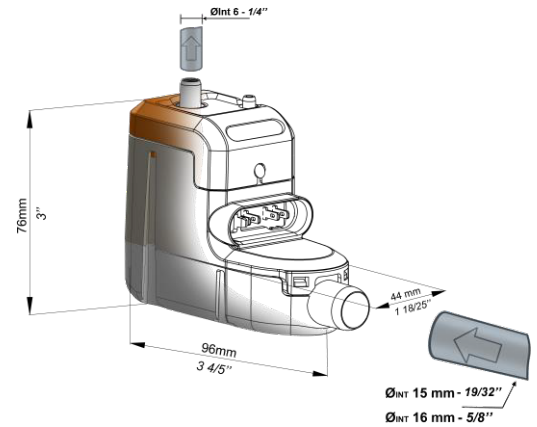
For use with any air-conditioning units, up to 20 kW :

- Wall mounted
- Ceiling suspended
- Ducted
- ☒ Fan-coils



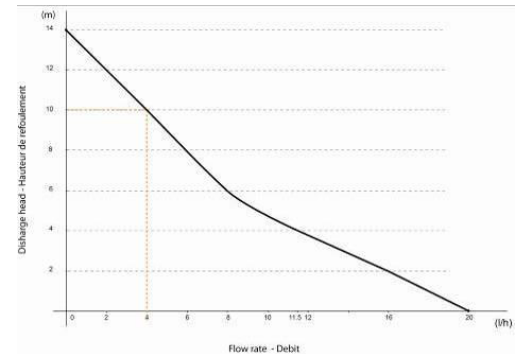
TECHNICAL SPECIFICATION

| | |
|--|--------------------------------------|
| Max. flow rate | 20 l/h |
| Max. discharge head | 10 m (Flow rate=4l/h) |
| Max pressure | 14 m (Flow rate =0l/h) |
| Sound level at 1m : according to EN ISO 3744 (Measured at LNE lab, pump operating with water, out of application) | 22 dBA |
| Sound level at 1m: (Measured at Sauermann lab, pump operating with water) | 25 dBA |
| Mains supply | 230V~ 50/60Hz - 14 W |
| Insulation | ☑ (double insulation) |
| Detection levels | ON : 18mm, OFF : 13mm, Safety : 21mm |
| Safety switch | NC 8 A resistive – 250V |
| Thermal protection (overheating) | 115°C (Auto reset) |
| Operating conditions | 100% - Continuous duty |
| Protection | IPX4 |
| Safety standards | CE & EAC |
| RoHS directive | Compliant |
| WEEE directive | Compliant |
| Packaging | 0.41kg – L170 x l160 x H95 mm |
| Masterpack | 12 pieces |



ACTUAL FLOW RATES (l/h)

| | Discharge head | Total tube length (Øint 6 mm, 1/4") | | | |
|--|----------------|--|------|------|------|
| | | 5 m | 10 m | 20 m | 30 m |
| | 0 m | 20 | 19 | 18 | 17 |
| | 2 m | 16 | 15 | 14 | 13,5 |
| | 4 m | 11,5 | 11 | 10,5 | 10 |
| | 6 m | | 8,5 | 7,5 | 6,5 |
| | 8 m | | 6 | 5 | 4 |
| | 10 m | | 4 | 3,5 | 2,5 |



RECOMMENDED ACCESSORIES



Clear PVC hose Ø int. 6mm (1/4")
 ACC00105 : 5 m
 ACC 00150 : 50 m
 ACC 00151 : braided, 50 m



Self-sealing fittings
 for drain hose Ø int. 6 mm (1/4")
 ACC 00205