

NOTE: FASCO AUSTRALIA IS HAPPY TO PROVIDE TECHNICAL ASSISTANCE TO OUR CUSTOMERS IN MANY AREAS. HOWEVER, SINCE FASCO AUSTRALIA IS NOT AWARE OF ALL DATA CONCERNING THE USE AND APPLICATION OF THIS MOTOR, THE SUITABILITY OF THE MOTOR FOR THE APPLICATION MUST BE DETERMINED BY AND IS THE RESPONSIBILITY OF THE CUSTOMER.

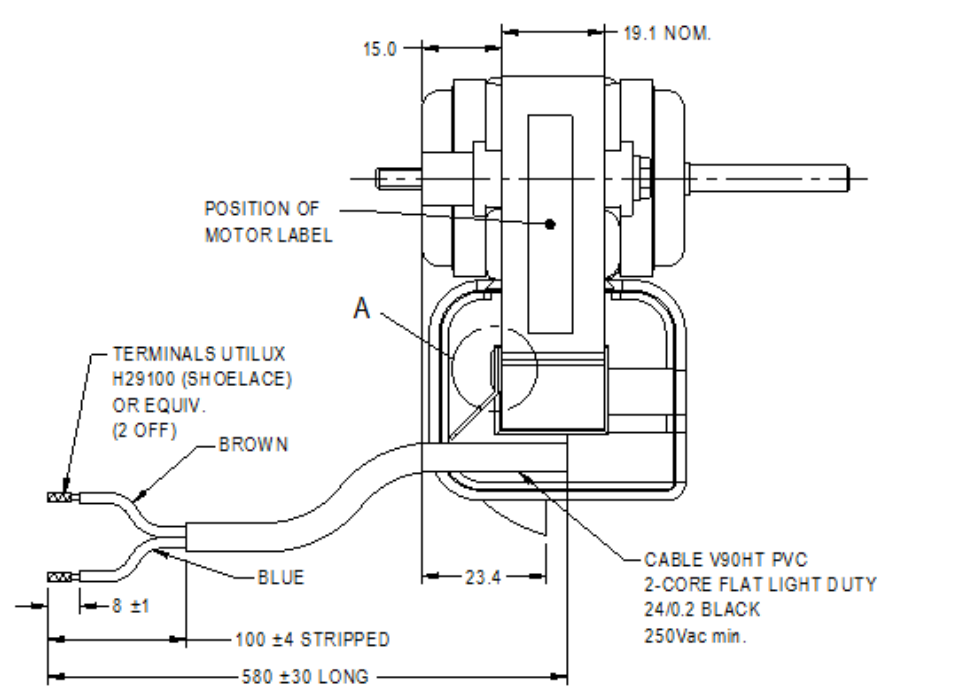
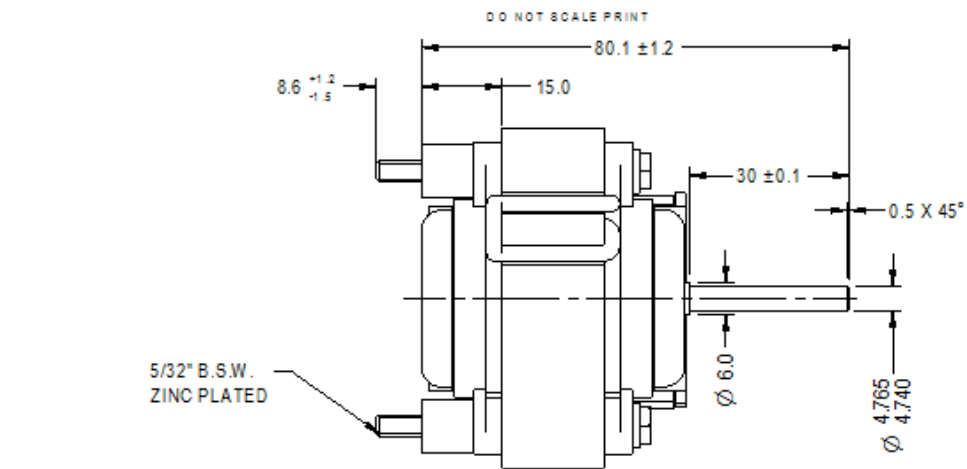


MOTOR SPECIFICATION

CUSTOMER	-----			
CUSTOMER P/N	-----			
QR No.	----	CAPACITOR	uF/V	
POWER OUTPUT	8 W	START	----	
MOTOR TYPE	S/POLE	RUN	----	
SUPPLY	VOLTS	HERTZ	PHASE	POLES
	240	50	1	2
ENCLOSURE	CLIP ON BOBBIN			
SPEED (RPM) AT RATED OUTPUT	2200±100	WINDING TYPE	SINGLE SP.	
ROTATION	ANTI-CLOCKWISE			
INSULATION CLASS	B	DUTY	AOM	
THERMAL PROTECTION RATED CURRENT	ZP 0.27A			
APPLICATION	REFRIGERATION MOTOR			
MOUNTING	BOBBIN & SCREWS			
BEARING & LUBRICATION	626ZZ 140°C GREASE			
SUPPLY LEAD	COLOUR	BLACK		
	LENGTH	AS NOTED		
	TERMINALS	AS SHOWN		
	G.O. HOUSING	----		
<input checked="" type="checkbox"/> MULTI STRAND				
<input type="checkbox"/> SINGLE CORE				
EARTH PROVISION	-----			
BASIC BUILD SPECIFICATION	-----			
PERFORMANCE SPECIFICATION	SPM53001-01			
SHAFT MATERIAL	MILD STEEL			
CONNECTION DIAGRAM	----	PAINT SPEC	CLEAR VARNISH	

SPECIAL REQUIREMENTS
 PACKAGING
 20 - MOTORS PER BOX
 ADDITIONAL PROTECTION :-
 CORROSION INHIBITING PAPER IN EACH BOX
 SHAFT COATED WITH RUST INHIBITOR
 PALLET AND BOX LABELS TO HAVE:-
 FASCO NUMBER
 DATE OF MANUFACTURE
 QUANTITY
 WEIGHT

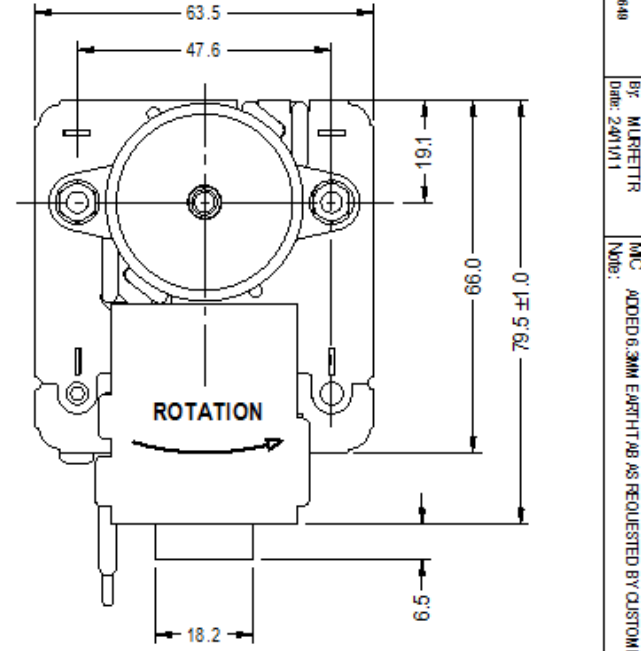
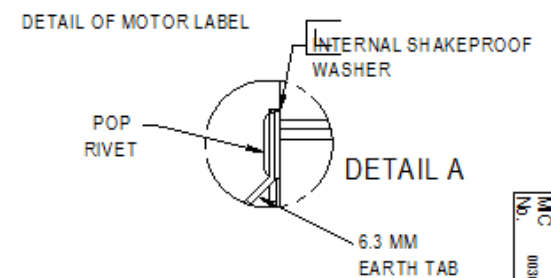
PACK PARTS IN PLASTIC BAG AND ATTACH TO MOTOR LEAD.
 2 - NUT 5/32" B.S.W. 5/16" A/F HEX ZINC PLATED
 2 - 4 DIA INTERNAL SHAKEPROOF WASHER ZINC PLATED.



FASCO **J06KR10J**
 240V 50Hz 0.27A
 Class B Type: S/Pole Prot.ZP
 Duty AOM IP20 PH1

DATE CODE
 29 WEEK
 11 YEAR
 A FACTORY

29-11A
 10



DIMENSIONS IN mm UNLESS OTHERWISE SPECIFIED
 GENERAL TOLERANCES
 LINEAR: X = ± 0.10, XX = ± 0.25, XXX = ± 0.51
 ANGULAR: X = ± 1°, XX = ± 0.5°
 SURFACE FINISH: MAX 0.8 MICROMETRES
 SYMBOLS PER A.S. 1100

This drawing remains the property of Fasco Australia Pty. Ltd. No part or parts of this drawing may be reproduced without written permission.

MAT'L		
FINISH		
DRAWN	MURPETTR	21/07/11
CHECKED	BALCHANT	24/11/11
RELEASED	BALCHANT	24/11/11
SCALE	1:1	

FASCO AUSTRALIA
 ASN 78 000 010 944
 1/14 Monterey Road Dandenong Victoria

FRAME	.MOTOR	
STATUS	R	
SHEET	DWG. NO.	J06KR10J
		B

MC No: 003840
 Date: 24/11/11
 BY: MURPETTR
 MC: ADDED 3MM EARTH TAB AS REQUESTED BY CUSTOMER