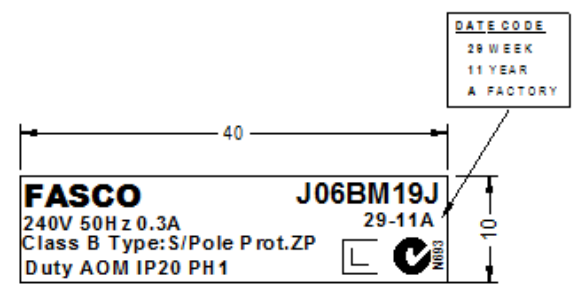
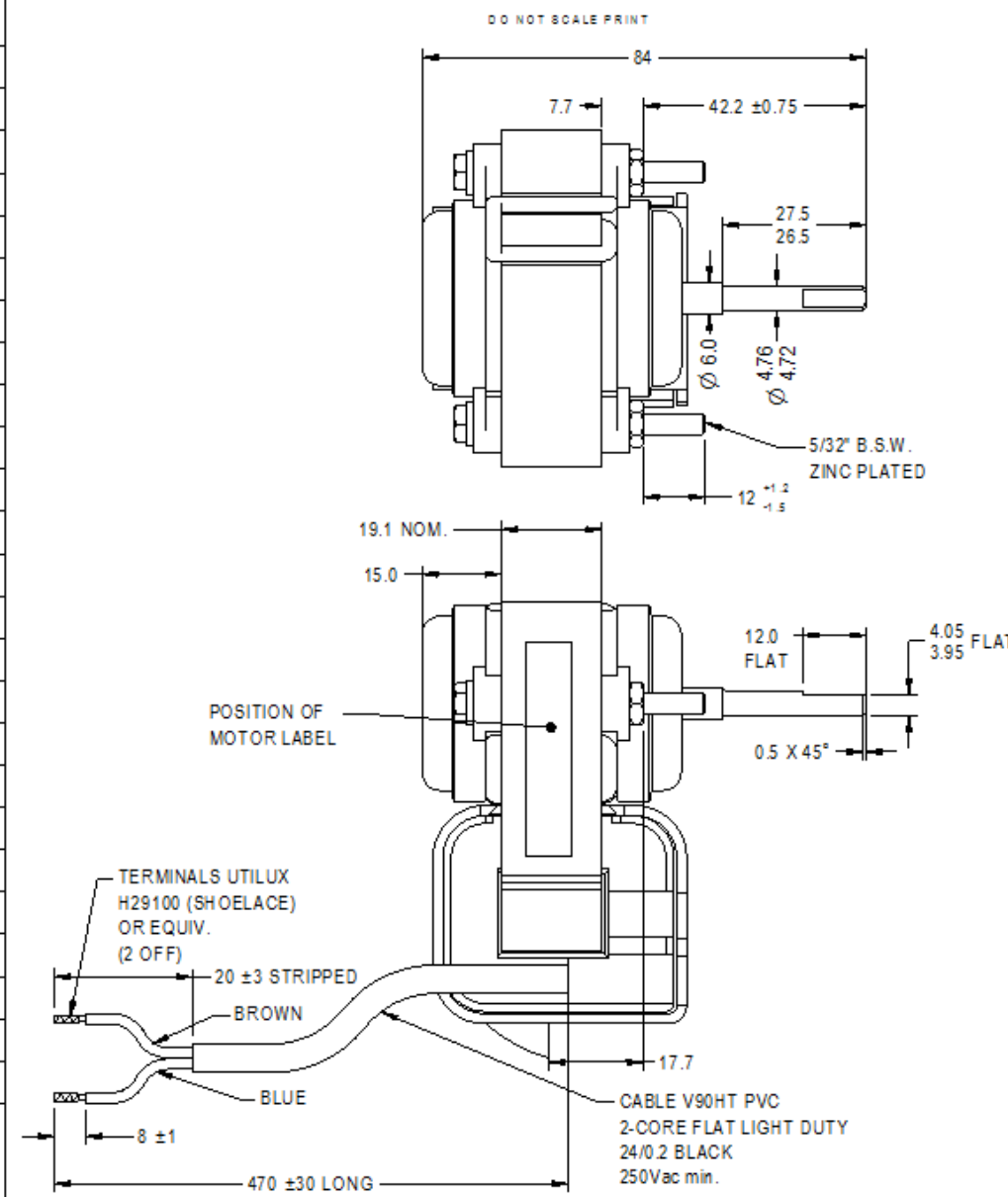


NOTE: FASCO AUSTRALIA IS HAPPY TO PROVIDE TECHNICAL ASSISTANCE TO OUR CUSTOMERS IN MANY AREAS. HOWEVER, SINCE FASCO AUSTRALIA IS NOT AWARE OF ALL DATA CONCERNING THE USE AND APPLICATION OF THIS MOTOR, THE SUITABILITY OF THE MOTOR FOR THE APPLICATION MUST BE DETERMINED BY AND IS THE RESPONSIBILITY OF THE CUSTOMER.

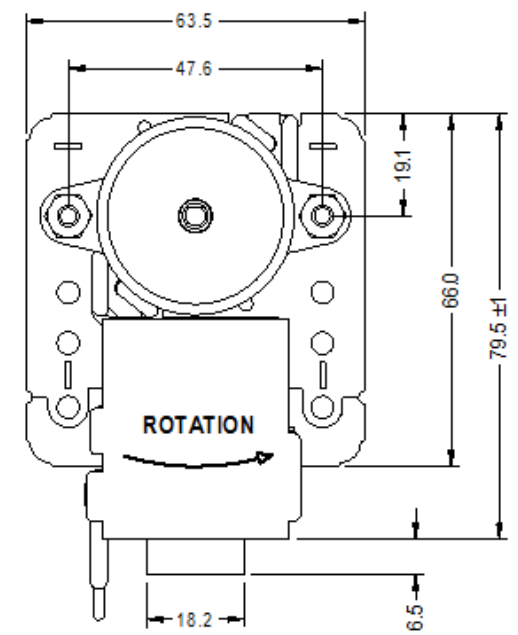


MOTOR SPECIFICATION

CUSTOMER	-----			
CUSTOMER P/N	-----			
QR No.	----	CAPACITOR	u1/v	
POWER OUTPUT	7.5 W	START	----	
MOTOR TYPE	S/POLE	RUN	----	
SUPPLY	VOLTS	HERTZ	PHASE	POLES
	240	50	1	2
ENCLOSURE	CLIP ON BOBBIN			
SPEED (RPM) AT RATED OUTPUT	2000±100	WINDING TYPE	SINGLE SP.	
ROTATION	ANTI-CLOCKWISE			
INSULATION CLASS	B	DUTY	AOM	
THERMAL PROTECTION RATED CURRENT	ZP 0.3A			
APPLICATION	REFRIGERATION MOTOR			
MOUNTING	BOBBIN & SCREWS			
BEARING & LUBRICATION	626ZZ 140°C GREASE			
SUPPLY LEAD	COLOUR	BLACK		
	LENGTH	AS NOTED		
	TERMINALS	AS SHOWN		
	Q.C. HOUSING	----		
<input checked="" type="checkbox"/> MULTI STRAND				
<input type="checkbox"/> SINGLE CORE				
EARTH PROVISION	-----			
BASIC BUILD SPECIFICATION	-----			
PERFORMANCE SPECIFICATION	SPM53016-01			
SHAFT MATERIAL	MILD STEEL			
CONNECTION DIAGRAM	-----	PAINT SPEC	CLEAR VARNISH	



DETAIL OF MOTOR LABEL



M/C No. 003899
 D/F MURPETTR Date: 10/11/11
 M/C FIRST SOLID EDGE DRAWING No.

DIMENSIONS IN mm UNLESS OTHERWISE SPECIFIED

GENERAL TOLERANCES
 LINEAR: X = ± 0.10
 XX = ± 0.25
 XXX = ± 0.51
 ANGULAR: X = ± 1°
 XX = ± 0.5°

SURFACE FINISHES MAX. 0.0 MICROMETRES SYMBOLS PER A.S. 1100

This drawing remains the property of Fasco Australia Pty. Ltd. No part or parts of this drawing may be reproduced without its permission.

MATERIAL		FINISH	
DRAWN	MURPETTR	20/10/11	
CHECKED	BALOHANT	13/01/12	
RELEASED	BALOHANT	13/01/12	
SCALE	1:1		

FRAME	.MOTOR		DWG. NO. J06BM19J	REV/ISSN A
STATUS	R			
SHEET	A3			
1/14 Monterey Road Dandenong Victoria			240V 50HZ 1SP ACW	

SPECIAL REQUIREMENTS

PACKAGING: 20 - MOTORS PER BOX

ADDITIONAL PROTECTION :-
 CORROSION INHIBITING PAPER IN EACH BOX
 SHAFT COATED WITH RUST INHIBITOR

PALLET AND BOX LABELS TO HAVE:-
 FASCO NUMBER
 DATE OF MANUFACTURE
 QUANTITY
 WEIGHT

PACK PARTS IN PLASTIC BAG AND ATTACH TO MOTOR LEAD.
 2 - NUT 5/32" B.S.W. 5/16" A/F HEX ZINC PLATED
 2 - 4 DIA INTERNAL SHAKEPRO OF WASHER ZINC PLATED.