

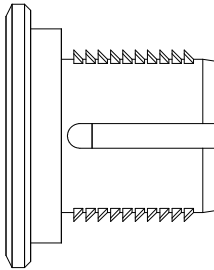
## **REMOTE TEMPERATURE SENSOR TYPE RSP-100**

The RSP-100 is a modern remote sensor & housing for wall or ceiling installation.

With a low profile unobtrusive design the RSP-100 is also easy to install in Gyprock (dry wall) or masonry walls. They are supplied with a 100 mm sensor lead & standard sensor extension leads of 5 – 10 & 15 meters are available as standard to connect them to the microprocessor main control PCB or the HAN-L62 wall control.

The RSP-100 remote sensor is suitable for use with all Hanwest microprocessor controllers.

To install the RSP-100 drill a 25mm hole, connect the sensor extension wire and simply push the sensor into the hole.



SENSOR HOUSING SIDE VIEW



## **REMOTE TEMPERATURE SENSOR TYPE RES**

The RES range of sensors are designed for duct mounting applications.

They utilize the same sensor bead minus the white sensor housing and are available in 5 & 10 mt lead lengths as standard to connect to either the main control PCB or the HAN-L62 wall control.