

Isolation Pad, Corkrib, Flatback

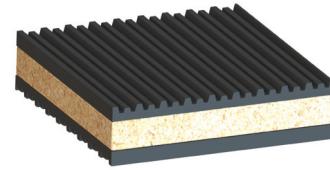
For Loads 75 to 350 kPa

APPLICATION

Corkrib is used where a pad mounting is required for the effective isolation of noise and vibration from equipment with speeds down to the order of 2,000 RPM, and for applications where some degree of damping is needed. Typically used on airconditioners, business machines, transformers, pumps, machine tools, metal punches, presses, cooling towers, etc.

FEATURES

- Made from a layer of polyurethane bonded cork, sandwiched between two layers of rubber pad (Flatback); unloaded thickness 25mm
- Cross-ribbed upper and lower non-skid faces which usually eliminate the need for bolting down
- Alternately raised ribs
- May be used in multiple layers with steel or aluminium shim spacers to increase isolation efficiency
- High damping factor, $C/C_c = 0.2$



CORKRIB

OPTIONS

- The thickness and specification of cork material may be varied on request
- Available as preassembled sizes in Flexplate configurations

LOAD RANGE

Standard Corkrib pads will provide effective noise and vibration isolation through a load range of 75 to 350 kPa. Recommended load for most applications is 200 to 300 kPa with corresponding static deflections up to 3.4mm.

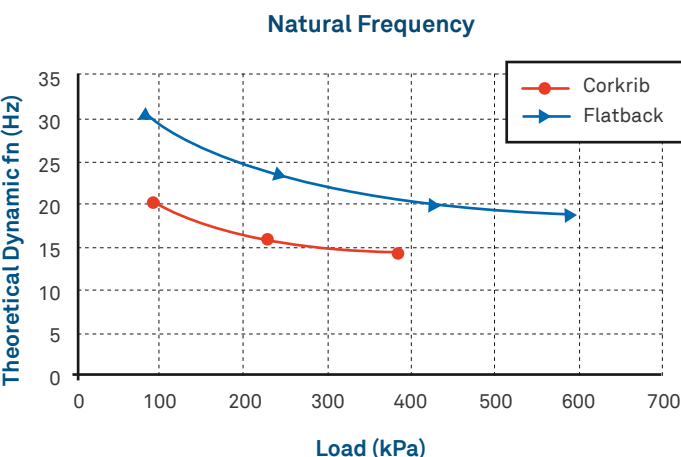
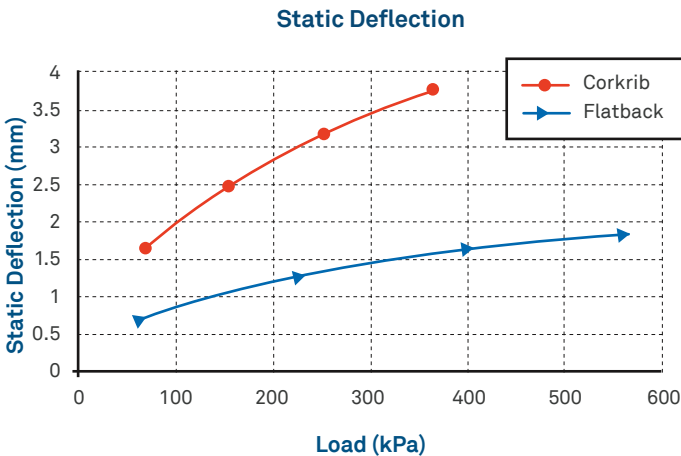
DYNAMIC CHARACTERISTICS

Cork/rubber mountings differ from spring mountings in that the isolation efficiency is a function not only of deflection, but also of the rubber hardness (durometer) and cork density. Isolation efficiency is usually less than indicated by static deflection alone.

For effective assessment of theoretical isolation efficiency, the graph showing dynamic f_n against load should be used at all times.

ALTERNATELY RAISED RIBS

This feature provides effective vibration isolation over the entire load range. Only the alternate ribs are engaged under light loads, allowing improved isolation.



ALTERNATELY RAISED RIBS

MANUFACTURED SIZE

Standard size sheets: 500 x 500 x 25mm. Corkrib can be supplied cut to specific sizes on request; or it can be easily cut with a sharp knife or saw.

FLATBACK APPLICATION

Flatback is used in applications where a ribbed pad must be bonded on one side to a flat surface.

FEATURES

- Made from oil-resistant elastomer
- Alternately raised ribs provide near linear load deflection characteristic over recommended range of loadings. Load/deflection characteristics and theoretical values of dynamic natural frequency are shown in the graph on page 1

FLEXPLATE APPLICATION

Flexplates are used in applications where high point loads necessitate some load spreading; or where the machine base is provided with levelling screws.

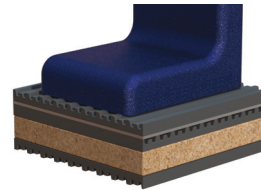
FLEXPLATE DESIGN

Three designs are available:

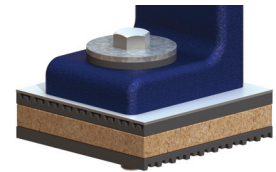
TYPE AA: Used where no bolting is required. Combines a layer of Corkrib bonded to a load-spreading steel plate topped with a non-skid layer of oil-resistant, ribbed rubber.

TYPE BB: Used if bolting is required. A 19mm hole is drilled through the centre of the assembly and an isolation washer supplied. Other hole sizes and locations are available on request.

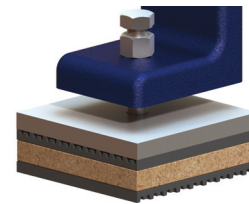
TYPE CC: Used on machines with levelling screws, making use of the machine's own levelling facility. It has an extra thick steel plate and a counterbored hole in the centre of the plate to locate the screw.



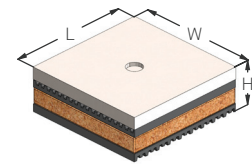
CORKRIB FLEXPLATE TYPE AA



CORKRIB FLEXPLATE TYPE BB



CORKRIB FLEXPLATE TYPE CC



CORKRIB FLEXPLATE

Corkrib Flexplate

Type	Recommended Load (kg)		Dimensions (mm)**				
	Steady	Impact*	L	W	H		
					AA	BB	CC
AA, BB, CC-25	90	60	50	50			
AA, BB, CC-56	200	130	75	75	38	32	35
AA, BB, CC-100	350	230	100	100			
AA, BB, CC-150	550	370	150	100			
AA, BB, CC-225	800	530	150	150	38	32	38
AA, BB, CC-300	1,100	740	200	150			
AA, BB, CC-400	1,450	970	200	200	41	35	41
AA, BB, CC-500	1,800	1,200	200	200			

* Used for hammers, shears punch presses, mills, etc.

** Special sizes available on request.

TECHNICAL ASSISTANCE

All Embelton offices can provide detailed technical assistance on the use of this equipment in specific applications.

CONDITIONS OF SALE

These products are sold subject to the published Embelton General Conditions of Sale, copies of which may be inspected on request.

SPECIFICATION

Vibration isolation pads shall be 25mm thick laminated cork and rubber, consisting of a 13mm thick anti-vibration cork core bonded between sheets of 6mm thick cross-ribbed, oil-resistant rubber pads having alternately raised ribs. The pads shall be type Corkrib as supplied by Embelton.