



Ambassador Industrial Pty Ltd.

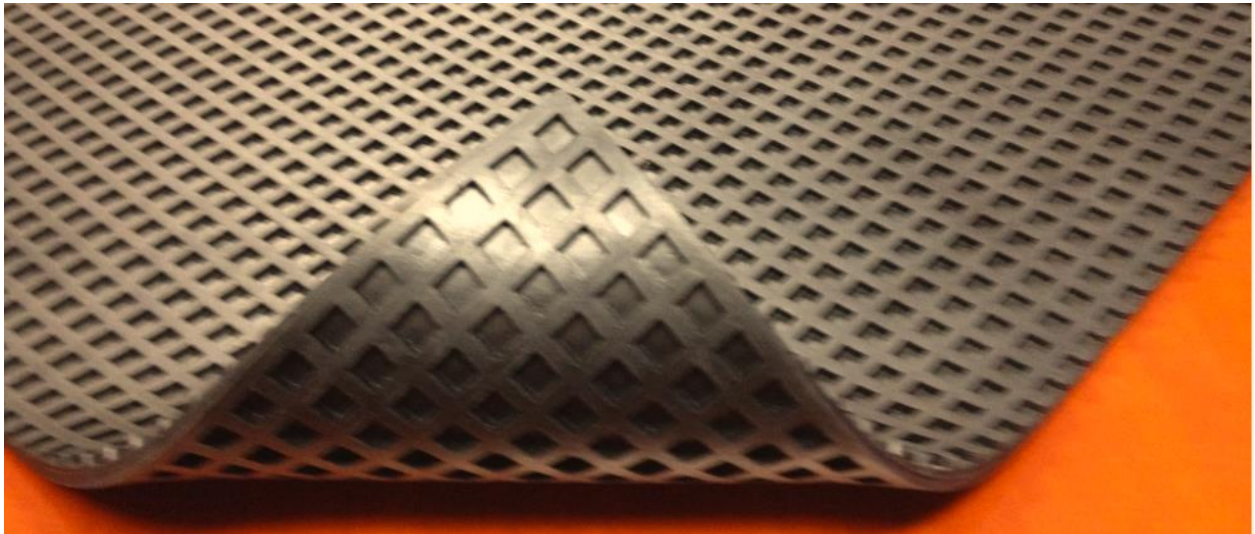
ABN 67 006 760 747
7-9 Westpool Dr, Hallam VIC 3803
P.O.Box 314 Patterson Lakes VIC 3197
PH: (03) 9796 5588
Fax: (03) 9796 5966.
Email: info@ambassindustrial.com.au



WAFFLE PADS T49M164

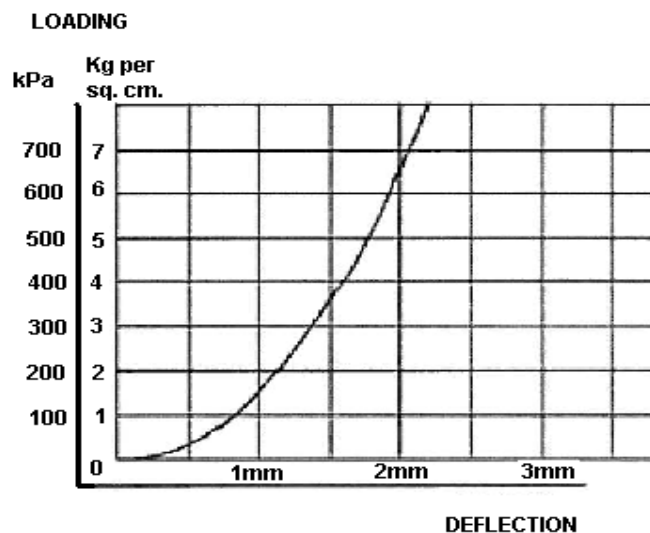
Ambassador Industrial's waffle pad is an ideal inexpensive way to eliminate unwanted machinery noise, shock and vibration.

Our waffle pad is supplied in a standard size of 457mm x 457mm x 9mm thick and can be easily cut with scissors or knife to the desired sizing. When installing a waffle pad an overlay of at least 6mm should be allowed.



DEFLECTION GRAPH

For best operation load the wafflepad @ 3.5kg/sq.cm. (50psi)
However it is suitable for a load rating from
0.7 to 4.2 kg/sq.cm.



All measurements given are nominal.