

Maneurop[®] reciprocating compressors

MT - MTZ - LTZ - NTZ - 60 Hz

R404A - R507A - R407C - R134a - R22

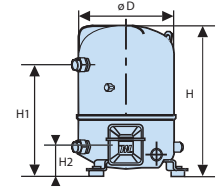
PRODUCT RANGE

		Nominal voltage							
		208-230/1/60	200-230/3/60	400/3/50 460/3/60	230/1/50	230/3/50	500/3/50 575/3/60	380/3/60	
Model		Motor voltage code							
		1	3	4	5	6	7	9	
M-HBP Applications	1 cylinder	MT/MTZ018	•	•	•	•	•		
		MT/MTZ022	•	•	•	•	•		•
		MT/MTZ028	•	•	•	•	•		•
		MT/MTZ032	•	•	•	•	•	•	•
		MT/MTZ036	•	•	•	•	•	•	•
		MT/MTZ040	•	•	•	•	•		
		MT/MTZ044	•	•	•		•	•	•
		MT/MTZ045		•	•				
		MT/MTZ050	•	•	•	•	•	•	•
		MT/MTZ051		•	•				
	2 cylinders	MT/MTZ056	•	•	•		•	•	•
		MT/MTZ057		•	•				
		MT/MTZ064	•	•	•				•
		MT/MTZ065		•	•				
		MT/MTZ072					•		•
		MT/MTZ073		•	•				
		MT/MTZ080		•	•		•		•
		MT/MTZ081		•	•				
		MT/MTZ100		•	•			•	•
		MT/MTZ125		•	•	•		•	•
4 cylinders	MT/MTZ144		•	•		•	•	•	
	MT/MTZ160		•	•		•	•	•	
	MTM/MTZ200 T		•	•		•	•	•	
	MTM/MTZ250 T		•	•		•	•	•	
Tandem 2 x 4	MTM/MTZ288 T		•	•		•	•	•	
	MTM/MTZ320 T		•	•		•	•	•	
	LBP Applications	1 cyl.	LTZ022	•	•	•	•		•
			LTZ028	•	•	•	•		•
LTZ040					•				
LTZ044			•	•	•		•		•
2 cyl.		LTZ050	•	•	•		•		•
		LTZ088		•	•		•		•
		LTZ100		•	•		•		•
		LTZ176 T		•	•		•		•
2 x 4	LTZ200 T		•	•		•		•	
	1 cyl.	NTZ048	120F0072	120F0029	120F0001	120F0087			
NTZ068		120F0073	120F0031	120F0002	120F0088				
NTZ096		120F0074	120F0033	120F0003					
NTZ108		120F0075	120F0035	120F0004					
NTZ136		120F0076	120F0037	120F0005					
4 cyl.		NTZ215		120F0039	120F0006				
		NTZ271		120F0041	120F0007				
2 x 4		NTZ430 T			120F0024				
	NTZ542 T			120F0025					

M-HBP: Medium High Back Pressure - LBP: Low Back Pressure
NTZ code 1 & 5 available end 2006

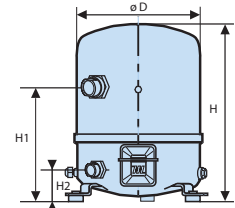
1 cylinder

D : 225 mm
H : 333/358 mm
H1 : 263 mm
H2 : 68 mm



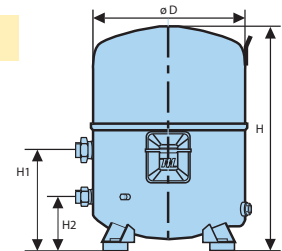
2 cylinders

D : 288 mm
H : 415 mm
H1 : 266 mm
H2 : 75 mm



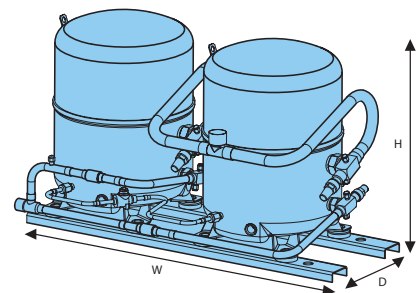
4 cylinders

D : 352 mm
H : 519/540 mm
H1 : 233 mm
H2 : 125 mm

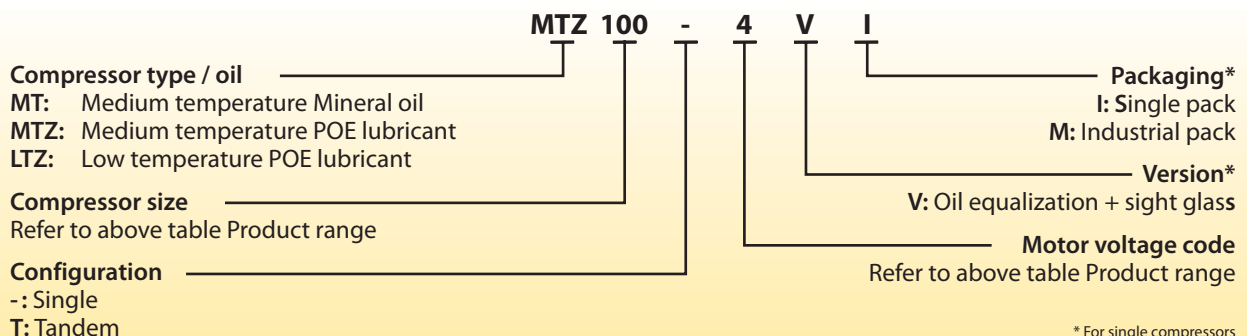


Tandem 2 x 4

H : 544/565 mm
D : 515 mm
W : 925 mm



CODE NUMBERS FOR ORDERING MT, MTZ, LTZ SERIES

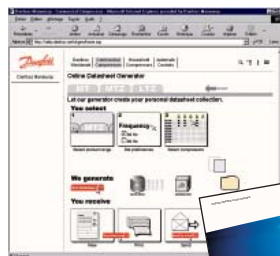


Model	To	-45		-40		-35		-30		-25		-20		-15		-10	
	Tc	Qo	Pe	Qo	Pe	Qo	Pe	Qo	Pe	Qo	Pe	Qo	Pe	Qo	Pe	Qo	Pe
NTZ048	35	450	0.54	790	0.81	1 370	1.08	1 930	1.33	2 590	1.57	3 370	1.78	4 260	1.95	5 290	2.06
	45	230	0.40	500	0.71	850	1.02	1 480	1.33	2 040	1.62	2 690	1.89	3 440	2.13	4 310	2.33
	55	-	-	-	-	510	0.88	830	1.24	1 230	1.59	2 000	1.92	2 610	2.23	3 310	2.51
NTZ068	35	960	1.18	1 370	1.42	2 140	1.67	2 860	1.94	3 760	2.23	4 850	2.54	6 180	2.90	7 770	3.30
	45	930	1.18	960	1.45	1 370	1.73	2 200	2.02	2 920	2.34	3 810	2.68	4 900	3.07	6 210	3.49
	55	-	-	-	-	930	1.76	1 320	2.08	1 830	2.42	2 920	2.80	3 790	3.21	4 850	3.66
NTZ096	35	920	1.19	1 630	1.66	2 840	2.13	3 990	2.60	5 350	3.04	6 940	3.45	8 780	3.80	10 880	4.08
	45	-	-	890	1.40	1 630	1.96	2 960	2.54	4 160	3.12	5 560	3.70	7 190	4.24	9 050	4.75
	55	-	-	-	-	810	1.64	1 530	2.31	2 430	3.02	4 140	3.75	5 530	4.48	7 140	5.19
NTZ108	35	1 050	1.73	1 800	2.10	3 130	2.53	4 440	2.99	6 020	3.48	7 910	3.97	10 140	4.46	12 730	4.94
	45	-	-	1 240	2.04	2 040	2.51	3 530	3.04	4 860	3.62	6 440	4.24	8 290	4.88	10 460	5.53
	55	-	-	-	-	1 270	2.40	2 030	2.97	2 970	3.61	4 850	4.32	6 320	5.08	8 060	5.87
NTZ136	35	1 540	2.21	2 530	2.77	4 240	3.36	5 840	4.00	7 730	4.67	9 940	5.36	12 500	6.06	15 420	6.79
	45	-	-	1 690	2.65	2 720	3.31	4 620	4.03	6 260	4.80	8 170	5.60	10 380	6.44	12 920	7.31
	55	-	-	-	-	1 730	3.15	2 710	3.95	3 930	4.81	6 340	5.73	8 190	6.70	10 320	7.72
NTZ215	35	2 690	3.23	4 140	4.08	6 760	4.96	9 210	5.87	12 160	6.78	15 680	7.68	19 820	8.55	24 640	9.38
	45	1 460	2.84	2 650	3.81	4 180	4.86	7 120	5.98	9 720	7.14	12 840	8.34	16 530	9.57	20 860	10.80
	55	-	-	-	-	2 410	4.45	3 900	5.75	5 810	7.14	9 650	8.62	12 810	10.16	16 550	11.76
NTZ271	35	3 290	4.20	5 410	5.40	9 250	6.73	12 980	8.14	17 490	9.63	22 830	11.17	29 060	12.72	36 260	14.27
	45	2 110	3.92	3 730	5.15	5 840	6.55	9 930	8.11	13 540	9.78	17 840	11.56	22 900	13.41	28 780	15.30
	55	-	-	-	-	3 850	6.22	5 780	7.88	8 230	9.65	13 230	11.61	17 130	13.69	21 700	15.87
NTZ430	35	5 380	6.45	8 280	8.16	13 520	9.92	18 420	11.74	24 320	13.56	31 360	15.36	39 640	17.10	49 280	18.76
	45	2 920	5.67	5 300	7.62	8 360	9.72	14 240	11.96	19 440	14.28	25 680	16.68	33 060	19.14	41 720	21.60
	55	-	-	-	-	4 820	8.90	7 800	11.50	11 620	14.29	19 300	17.24	25 620	20.32	33 100	23.52
NTZ542	35	6 580	8.39	10 820	10.80	18 500	13.46	25 960	16.28	34 980	19.26	45 660	22.34	58 120	25.44	72 520	28.54
	45	4 220	7.84	7 460	10.30	11 680	13.11	19 860	16.22	27 080	19.56	35 680	23.12	45 800	26.82	57 560	30.60
	55	-	-	-	-	7 700	12.44	11 560	15.76	16 460	19.30	26 460	23.22	34 260	27.38	43 400	31.74

Legend: **To:** Evaporating temperature in °C **Qo:** Cooling capacity in W Superheat = 10K Suction temp. = 20°C
Tc: Condensing temperature in °C **Pe:** Power input in kW Subcooling = 0 K Subcooling = 0 K
 NTZ series are drop-in replacement for LTZ series. Voltage: 460 V / 3 / 60 Hz

FURTHER REFERENCE

For more exhaustive information on Maneurop Reciprocating compressors, please refer to the following documents:


Danfoss Commercial Compressors Online Datasheet Generator

www.danfoss.com/odsg

A new tool, providing user-friendly access to full technical data, performance data and outline drawings for each individual Maneurop reciprocating compressor MT, MTZ, LTZ and NTZ.


Selection and Application Guidelines for MT, MTZ Maneurop® reciprocating compressors

Literature: FRCC.PC.004.

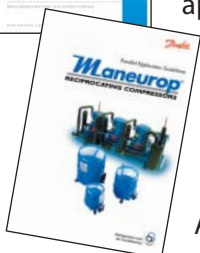
Selection and Application Guidelines for NTZ Maneurop® reciprocating compressors

Literature: FRCC.PC.002.

With nominal performance data, operating envelopes, outline drawings, electrical data for NTZ compressors.


Selection and Application Guidelines for Maneurop MTM, MTZ & NTZ tandem assemblies

With performance data, operating envelopes, outline drawings, electrical data, installation and application information for Maneurop MTM, MTZ and NTZ tandem assemblies.


Parallel Application Guidelines for Maneurop MT, MTZ, LTZ and NTZ compressors

With information about oil equalization, suction and discharge lines, compressor control sequence, system components and installation and application information, for mounting in parallel Maneurop MT, MTZ, LTZ and NTZ compressors.

All above documents are available for download from our website: <http://cc.danfoss.com>



The Danfoss product range for the refrigeration and air conditioning industry

Danfoss Refrigeration & Air Conditioning is a worldwide manufacturer with a leading position in industrial, commercial and supermarket refrigeration as well as air conditioning and climate solutions.

We focus on our core business of making quality products, components and systems that enhance performance and reduce total life cycle costs – the key to major savings.



*Controls for
Commercial Refrigeration*



*Controls for
Industrial Refrigeration*



*Electronic Controls &
Sensors*



Industrial Automation



Household Compressors



Commercial Compressors



Sub-Assemblies



Thermostats

We are offering a single source for one of the widest ranges of innovative refrigeration and air conditioning components and systems in the world. And, we back technical solutions with business solution to help your company reduce costs, streamline processes and achieve your business goals.

Danfoss A/S • www.danfoss.com